

ANGPTL6 Antibody (Center)
Purified Rabbit Polyclonal Antibody (Pab)
Catalog # AP7769c

Specification

ANGPTL6 Antibody (Center) - Product Information

| | |
|-------------------|---------------------------|
| Application | WB,E |
| Primary Accession | Q8NI99 |
| Other Accession | NP_114123 |
| Reactivity | Human |
| Host | Rabbit |
| Clonality | Polyclonal |
| Isotype | Rabbit Ig |
| Calculated MW | 51694 |
| Antigen Region | 206-236 |

ANGPTL6 Antibody (Center) - Additional Information

Gene ID 83854

Other Names

Angiopoietin-related protein 6,
Angiopoietin-like protein 6,
Angiopoietin-related growth factor,
Angiopoietin-related protein 5, ANGPTL6,
AGF, ARP5

Target/Specificity

This ANGPTL6 antibody is generated from rabbits immunized with a KLH conjugated synthetic peptide between 206-236 amino acids from the Central region of human ANGPTL6.

Dilution

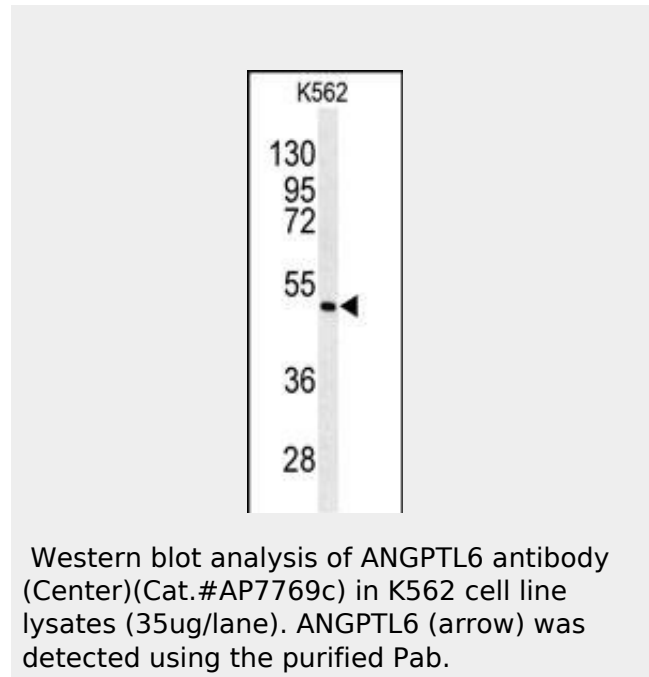
WB~~1:1000

Format

Purified polyclonal antibody supplied in PBS with 0.09% (W/V) sodium azide. This antibody is prepared by Saturated Ammonium Sulfate (SAS) precipitation followed by dialysis against PBS.

Storage

Maintain refrigerated at 2-8°C for up to 2 weeks. For long term storage store at -20°C in small aliquots to prevent freeze-thaw cycles.



ANGPTL6 Antibody (Center) - Background

ANGPTL6 may play a role in the wound healing process. It may promote epidermal proliferation, remodeling and regeneration and may promote the chemotactic activity of endothelial cells and induce neovascularization. ANGPTL6 may counteract high-fat diet-induced obesity and related insulin resistance through increased energy expenditure.

ANGPTL6 Antibody (Center) - References

Zhang,Y., Biochem. Biophys. Res. Commun. 347 (1), 100-108 (2006)
Oike,Y., Blood 103 (10), 3760-3765 (2004)

Precautions

ANGPTL6 Antibody (Center) is for research use only and not for use in diagnostic or therapeutic procedures.

ANGPTL6 Antibody (Center) - Protein Information

Name ANGPTL6

Synonyms AGF, ARP5

Function

May play a role in the wound healing process. May promote epidermal proliferation, remodeling and regeneration. May promote the chemotactic activity of endothelial cells and induce neovascularization. May counteract high-fat diet-induced obesity and related insulin resistance through increased energy expenditure.

Cellular Location

Secreted.

ANGPTL6 Antibody (Center) - Protocols

Provided below are standard protocols that you may find useful for product applications.

- [Western Blot](#)
- [Blocking Peptides](#)
- [Dot Blot](#)
- [Immunohistochemistry](#)
- [Immunofluorescence](#)
- [Immunoprecipitation](#)
- [Flow Cytometry](#)
- [Cell Culture](#)