

CAMKK1 Antibody (N-term)
Purified Rabbit Polyclonal Antibody (Pab)
Catalog # AP7768a

Specification

CAMKK1 Antibody (N-term) - Product Information

Application	WB,E
Primary Accession	O8N5S9
Reactivity	Human
Host	Rabbit
Clonality	Polyclonal
Isotype	Rabbit Ig
Calculated MW	55735
Antigen Region	86-121

CAMKK1 Antibody (N-term) - Additional Information

Gene ID 84254

Other Names

Calcium/calmodulin-dependent protein kinase kinase 1, CaM-KK 1, CaM-kinase kinase 1, CaMKK 1, CaM-kinase IV kinase, Calcium/calmodulin-dependent protein kinase kinase alpha, CaM-KK alpha, CaM-kinase kinase alpha, CaMKK alpha, CAMKK1, CAMKKA

Target/Specificity

This CAMKK1 antibody is generated from rabbits immunized with a KLH conjugated synthetic peptide between 86-121 amino acids from the N-terminal region of human CAMKK1.

Dilution

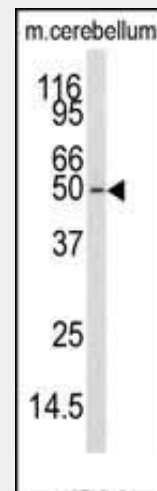
WB~~1:1000

Format

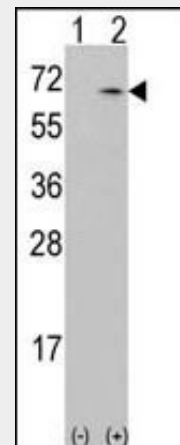
Purified polyclonal antibody supplied in PBS with 0.09% (W/V) sodium azide. This antibody is prepared by Saturated Ammonium Sulfate (SAS) precipitation followed by dialysis against PBS.

Storage

Maintain refrigerated at 2-8°C for up to 2 weeks. For long term storage store at -20°C in small aliquots to prevent freeze-thaw cycles.



Western blot analysis of anti-CAMKK1 Antibody (N-term) (Cat.#AP7768a) in mouse cerebellum tissue lysates (35ug/lane). CAMKK1 (arrow) was detected using the purified Pab.



Western blot analysis of CAMKK1 (arrow) using rabbit polyclonal CAMKK1 Antibody (N-term) (Cat.#AP7768a). 293 cell lysates (2 ug/lane) either nontransfected (Lane 1) or transiently transfected with the CAMKK1 gene (Lane 2).

CAMKK1 Antibody (N-term) - Background

Precautions

CAMKK1 Antibody (N-term) is for research use only and not for use in diagnostic or therapeutic procedures.

CAMKK1 Antibody (N-term) - Protein Information

Name CAMKK1

Synonyms CAMKKA

Function

Calcium/calmodulin-dependent protein kinase that belongs to a proposed calcium-triggered signaling cascade involved in a number of cellular processes. Phosphorylates CAMK1, CAMK1D, CAMK1G and CAMK4. Involved in regulating cell apoptosis. Promotes cell survival by phosphorylating AKT1/PKB that inhibits pro-apoptotic BAD/Bcl2- antagonist of cell death.

Cellular Location

Cytoplasm. Nucleus.

CAMKK1 belongs to the Serine/Threonine protein kinase family, and to the Ca(2+)/calmodulin-dependent protein kinase subfamily. This protein plays a role in the calcium/calmodulin-dependent (CaM) kinase cascade.

CAMKK1 Antibody (N-term) - References

Guest,C.B., PLoS ONE 3 (2), E1606 (2008)
Rudd,M.F., Genome Res. 16 (6), 693-701 (2006)
Ishikawa,Y., FEBS Lett. 550 (1-3), 57-63 (2003)
Matsushita,M., J. Biol. Chem. 274 (15), 10086-10093 (1999)

CAMKK1 Antibody (N-term) - Protocols

Provided below are standard protocols that you may find useful for product applications.

- [Western Blot](#)
- [Blocking Peptides](#)
- [Dot Blot](#)
- [Immunohistochemistry](#)
- [Immunofluorescence](#)
- [Immunoprecipitation](#)
- [Flow Cytometry](#)
- [Cell Culture](#)

CAMKK1 Antibody (N-term) - Citations

- [Ca2+/Calmodulin-Dependent Protein Kinase Kinases \(CaMKKs\) Effects on AMP-Activated Protein Kinase \(AMPK\) Regulation of Chicken Sperm Functions.](#)