

PHACTR2 Antibody (N-term)
Purified Rabbit Polyclonal Antibody (Pab)
Catalog # AP7618a

Specification

PHACTR2 Antibody (N-term) - Product Information

Application	WB, IHC-P,E
Primary Accession	O75167
Reactivity	Human
Host	Rabbit
Clonality	Polyclonal
Isotype	Rabbit Ig
Calculated MW	69700
Antigen Region	169-198

PHACTR2 Antibody (N-term) - Additional Information

Gene ID 9749

Other Names

Phosphatase and actin regulator 2,
PHACTR2, C6orf56, KIAA0680

Target/Specificity

This PHACTR2 antibody is generated from rabbits immunized with a KLH conjugated synthetic peptide between 169-198 amino acids from the N-terminal region of human PHACTR2.

Dilution

WB~~1:1000
IHC-P~~1:50~100

Format

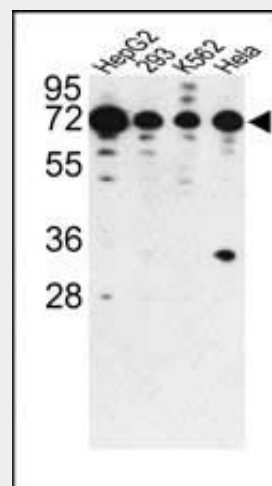
Purified polyclonal antibody supplied in PBS with 0.09% (W/V) sodium azide. This antibody is prepared by Saturated Ammonium Sulfate (SAS) precipitation followed by dialysis against PBS.

Storage

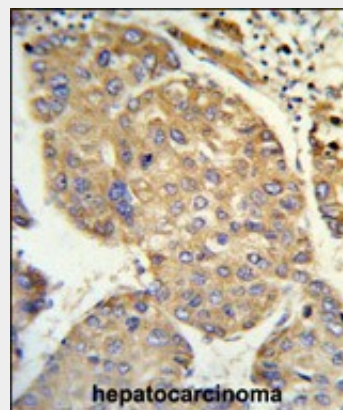
Maintain refrigerated at 2-8°C for up to 2 weeks. For long term storage store at -20°C in small aliquots to prevent freeze-thaw cycles.

Precautions

PHACTR2 Antibody (N-term) is for research



Western blot analysis of PHACTR2 antibody (N-term) (Cat. #AP7618a) in HepG2, 293, K562 and HeLa cell line lysates (35ug/lane). PHACTR2 (arrow) was detected using the purified Pab.



Formalin-fixed and paraffin-embedded human hepatocarcinoma reacted with PHACTR2 Antibody (N-term), which was peroxidase-conjugated to the secondary antibody, followed by DAB staining. This data demonstrates the use of this antibody for immunohistochemistry; clinical relevance has not been evaluated.

PHACTR2 Antibody (N-term) - References

use only and not for use in diagnostic or therapeutic procedures.

PHACTR2 Antibody (N-term) - Protein Information

Name PHACTR2

Synonyms C6orf56, KIAA0680

Cellular Location

[Isoform 2]: Membrane; Lipid-anchor

Wider,C., Lincoln,S.J. Neurosci. Lett. 453 (1), 9-11 (2009)

Kim,Y.C., Jung,Y.C. FEBS Lett. 580 (28-29), 6721-6729 (2006)

Olsen,J.V., Blagoev,B. Cell 127 (3), 635-648 (2006)

PHACTR2 Antibody (N-term) - Protocols

Provided below are standard protocols that you may find useful for product applications.

- [Western Blot](#)
- [Blocking Peptides](#)
- [Dot Blot](#)
- [Immunohistochemistry](#)
- [Immunofluorescence](#)
- [Immunoprecipitation](#)
- [Flow Cytometry](#)
- [Cell Culture](#)