

AFG3L2 Polyclonal Antibody

Catalog # AP74280

Specification

AFG3L2 Polyclonal Antibody - Product Information

Application	WB
Primary Accession	Q9Y4W6
Reactivity	Human
Host	Rabbit
Clonality	Polyclonal

AFG3L2 Polyclonal Antibody - Additional Information

Gene ID 10939

Other Names

AFG3-like protein 2 (EC 3.4.24.-)
(Paraplegin-like protein)

Dilution

WB~~WB 1:500-2000, ELISA
1:10000-20000

Format

Liquid in PBS containing 50% glycerol, 0.5% BSA and 0.02% sodium azide.

Storage Conditions

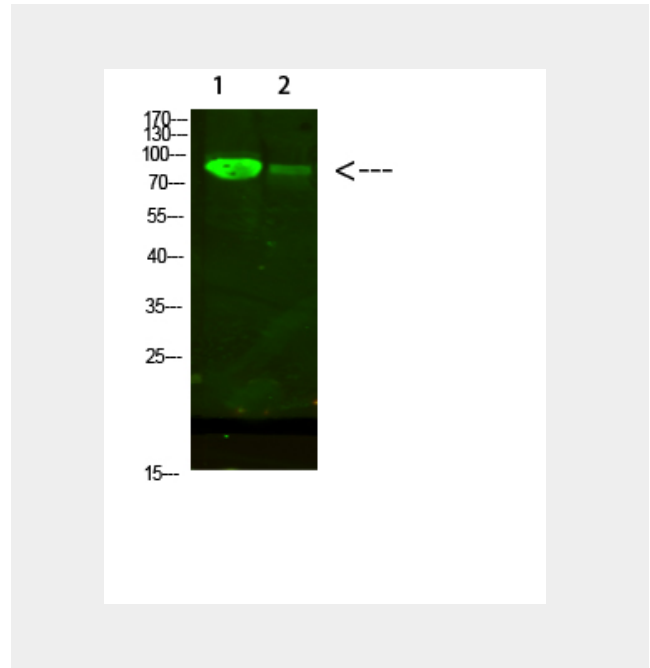
-20°C

AFG3L2 Polyclonal Antibody - Protein Information

Name AFG3L2 ([HGNC:315](#))

Function

ATP-dependent protease which is essential for axonal and neuron development. In neurons, mediates degradation of SMDT1/EMRE before its assembly with the uniporter complex, limiting the availability of SMDT1/EMRE for MCU assembly and promoting efficient assembly of gatekeeper subunits with MCU (PubMed:27642048). Required for paraplegin (SPG7) maturation (PubMed:30252181).



AFG3L2 Polyclonal Antibody - Background

ATP-dependent protease which is essential for axonal and neuron development. In neurons, mediates degradation of SMDT1/EMRE before its assembly with the uniporter complex, limiting the availability of SMDT1/EMRE for MCU assembly and promoting efficient assembly of gatekeeper subunits with MCU (PubMed:27642048). Required for the maturation of paraplegin (SPG7) after its cleavage by mitochondrial-processing peptidase (MPP), converting it into a proteolytically active mature form (By similarity).

target="_blank">30252181). After its cleavage by mitochondrial-processing peptidase (MPP), it converts paraplegin into a proteolytically active mature form (By similarity). Required for the maturation of PINK1 into its 52kDa mature form after its cleavage by mitochondrial-processing peptidase (MPP) (PubMed:22354088, PubMed:30252181). Involved in the regulation of OMA1-dependent processing of OPA1 (PubMed:32600459, PubMed:30252181).

Cellular Location

Mitochondrion. Mitochondrion inner membrane
{ECO:0000250|UniProtKB:Q8JZQ2};
Multi-pass membrane protein

Tissue Location

Ubiquitous. Highly expressed in the cerebellar Purkinje cells.

AFG3L2 Polyclonal Antibody - Protocols

Provided below are standard protocols that you may find useful for product applications.

- [Western Blot](#)
- [Blocking Peptides](#)
- [Dot Blot](#)
- [Immunohistochemistry](#)
- [Immunofluorescence](#)
- [Immunoprecipitation](#)
- [Flow Cytometry](#)
- [Cell Culture](#)