

APOA2 Antibody (Center)
Purified Rabbit Polyclonal Antibody (Pab)
Catalog # AP7422c

Specification

APOA2 Antibody (Center) - Product Information

Application	WB, IHC-P,E
Primary Accession	P02652
Other Accession	P18656
Reactivity	Human
Predicted	Monkey
Host	Rabbit
Clonality	Polyclonal
Isotype	Rabbit Ig
Calculated MW	11175
Antigen Region	28-56

APOA2 Antibody (Center) - Additional Information

Gene ID 336

Other Names

Apolipoprotein A-II, Apo-AII, ApoA-II, Apolipoprotein A2, Proapolipoprotein A-II, ProapoA-II, Truncated apolipoprotein A-II, Apolipoprotein A-II(1-76), APOA2

Target/Specificity

This APOA2 antibody is generated from rabbits immunized with a KLH conjugated synthetic peptide between 28-56 amino acids from the Central region of human APOA2.

Dilution

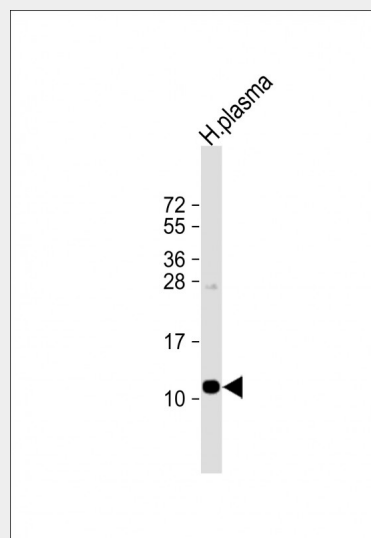
WB~~1:1000
IHC-P~~1:10~50

Format

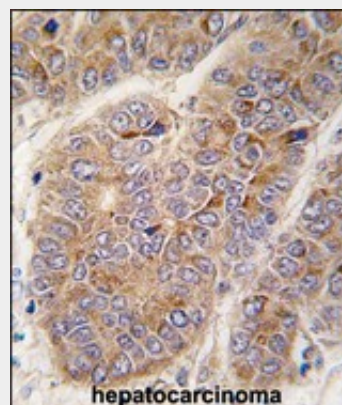
Purified polyclonal antibody supplied in PBS with 0.09% (W/V) sodium azide. This antibody is prepared by Saturated Ammonium Sulfate (SAS) precipitation followed by dialysis against PBS.

Storage

Maintain refrigerated at 2-8°C for up to 2 weeks. For long term storage store at -20°C in small aliquots to prevent freeze-thaw cycles.



Anti-APOA2 Antibody (Center) at 1:1000 dilution + human plasma lysate
Lysates/proteins at 20 µg per lane.
Secondary Goat Anti-Rabbit IgG, (H+L), Peroxidase conjugated at 1/10000 dilution.
Predicted band size : 11 kDa
Blocking/Dilution buffer: 5% NFDM/TBST.



Formalin-fixed and paraffin-embedded human hepatocarcinoma tissue reacted with APOA2 antibody (Center) (Cat.#AP7422c), which was peroxidase-conjugated to the secondary antibody, followed by DAB staining. This data demonstrates the use of this antibody for immunohistochemistry; clinical relevance has not been evaluated.

Precautions

APOA2 Antibody (Center) is for research use only and not for use in diagnostic or therapeutic procedures.

APOA2 Antibody (Center) - Protein Information

Name APOA2

Function

May stabilize HDL (high density lipoprotein) structure by its association with lipids, and affect the HDL metabolism.

Cellular Location

Secreted.

Tissue Location

Plasma; synthesized in the liver and intestine.

APOA2 Antibody (Center) - Background

APOA2, apolipoprotein (apo-) A-II, which is the second most abundant protein of the high density lipoprotein particles. The protein is found in plasma as a monomer, homodimer, or heterodimer with apolipoprotein D. Defects in this gene may result in apolipoprotein A-II deficiency or hypercholesterolemia.

APOA2 Antibody (Center) - References

Duesing, K., BMC Med. Genet. 10, 13 (2009)
Atta, M., Thromb. Haemost. 100 (3), 391-396 (2008)
Blanco-Vaca, F., J. Lipid Res. 42 (11), 1727-1739 (2001)

APOA2 Antibody (Center) - Protocols

Provided below are standard protocols that you may find useful for product applications.

- [Western Blot](#)
- [Blocking Peptides](#)
- [Dot Blot](#)
- [Immunohistochemistry](#)
- [Immunofluorescence](#)
- [Immunoprecipitation](#)
- [Flow Cytometry](#)
- [Cell Culture](#)