

## RCC1 Polyclonal Antibody

Catalog # AP73997

### Specification

#### RCC1 Polyclonal Antibody - Product Information

Application	<b>WB</b>
Primary Accession	<a href="#">P18754</a>
Reactivity	<b>Human, Mouse, Rat</b>
Host	<b>Rabbit</b>
Clonality	<b>Polyclonal</b>

#### RCC1 Polyclonal Antibody - Additional Information

**Gene ID** 1104

#### Other Names

RCC1 CHC1

#### Dilution

WB~~WB 1:500-2000, ELISA  
1:10000-20000

#### Format

Liquid in PBS containing 50% glycerol, 0.5% BSA and 0.02% sodium azide.

#### Storage Conditions

-20°C

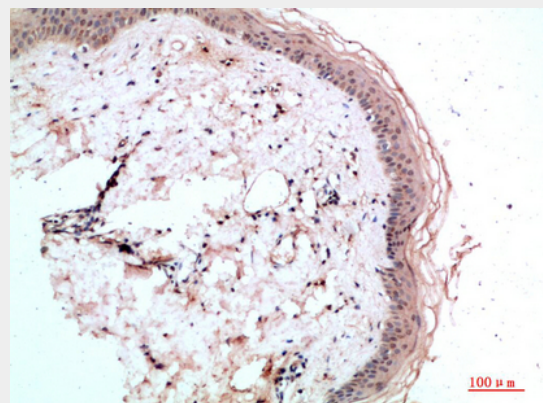
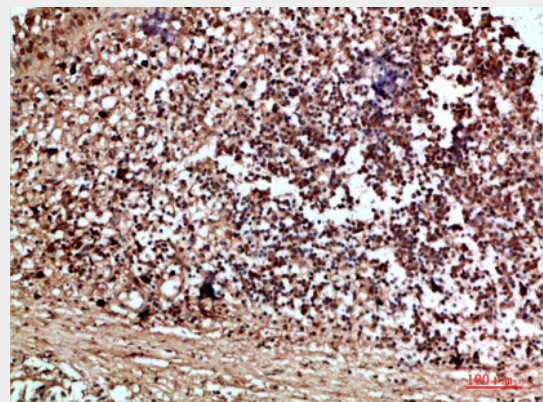
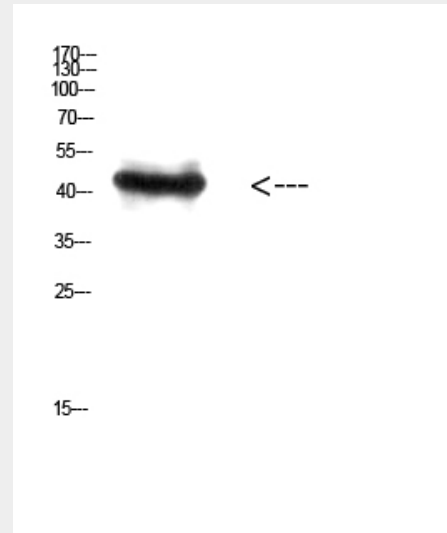
#### RCC1 Polyclonal Antibody - Protein Information

**Name** RCC1

**Synonyms** CHC1

#### Function

Guanine-nucleotide releasing factor that promotes the exchange of Ran-bound GDP by GTP, and thereby plays an important role in RAN-mediated functions in nuclear import and mitosis (PubMed:<a href="http://www.uniprot.org/citations/1944575" target="\_blank">1944575</a>, PubMed:<a href="http://www.uniprot.org/citations/17435751" target="\_blank">17435751</a>, PubMed:<a href="http://www.uniprot.org/citations/20668449" target="\_blank">20668449</a>)



target="\_blank">20668449</a>, PubMed:<a href="http://www.uniprot.org/citations/22215983" target="\_blank">22215983</a>, PubMed:<a href="http://www.uniprot.org/citations/11336674" target="\_blank">11336674</a>). Contributes to the generation of high levels of chromosome-associated, GTP-bound RAN, which is important for mitotic spindle assembly and normal progress through mitosis (PubMed:<a href="http://www.uniprot.org/citations/12194828" target="\_blank">12194828</a>, PubMed:<a href="http://www.uniprot.org/citations/17435751" target="\_blank">17435751</a>, PubMed:<a href="http://www.uniprot.org/citations/22215983" target="\_blank">22215983</a>). Via its role in maintaining high levels of GTP-bound RAN in the nucleus, contributes to the release of cargo proteins from importins after nuclear import (PubMed:<a href="http://www.uniprot.org/citations/22215983" target="\_blank">22215983</a>). Involved in the regulation of onset of chromosome condensation in the S phase (PubMed:<a href="http://www.uniprot.org/citations/3678831" target="\_blank">3678831</a>). Binds both to the nucleosomes and double-stranded DNA (PubMed:<a href="http://www.uniprot.org/citations/17435751" target="\_blank">17435751</a>, PubMed:<a href="http://www.uniprot.org/citations/18762580" target="\_blank">18762580</a>).

#### Cellular Location

Nucleus. Chromosome. Cytoplasm  
Note=Predominantly nuclear in interphase cells (PubMed:12194828). Binds to mitotic chromosomes (PubMed:12194828, PubMed:17435751, PubMed:20668449).

#### RCC1 Polyclonal Antibody - Background

Guanine-nucleotide releasing factor that promotes the exchange of Ran-bound GDP by GTP, and thereby plays an important role in RAN-mediated functions in nuclear import and mitosis (PubMed:1944575, PubMed:17435751, PubMed:20668449, PubMed:22215983, PubMed:11336674). Contributes to the generation of high levels of chromosome-associated, GTP-bound RAN, which is important for mitotic spindle assembly and normal progress through mitosis (PubMed:12194828, PubMed:17435751, PubMed:22215983). Via its role in maintaining high levels of GTP-bound RAN in the nucleus, contributes to the release of cargo proteins from importins after nuclear import (PubMed:22215983). Involved in the regulation of onset of chromosome condensation in the S phase (PubMed:3678831). Binds both to the nucleosomes and double-stranded DNA (PubMed:17435751, PubMed:18762580).

#### RCC1 Polyclonal Antibody - Protocols

Provided below are standard protocols that you may find useful for product applications.

- [Western Blot](#)
- [Blocking Peptides](#)
- [Dot Blot](#)
- [Immunohistochemistry](#)
- [Immunofluorescence](#)

- [Immunoprecipitation](#)
- [Flow Cytometry](#)
- [Cell Culture](#)