

## RHEB Polyclonal Antibody

Catalog # AP73940

### Specification

#### RHEB Polyclonal Antibody - Product Information

Application	WB
Primary Accession	<a href="#">Q15382</a>
Reactivity	Human, Mouse, Rat, Cow
Host	Rabbit
Clonality	Polyclonal

#### RHEB Polyclonal Antibody - Additional Information

Gene ID 6009

#### Other Names

Ras homolog enriched in brain

#### Dilution

WB~~WB 1:500-2000, ELISA  
1:10000-20000

#### Format

Liquid in PBS containing 50% glycerol, 0.5% BSA and 0.02% sodium azide.

#### Storage Conditions

-20°C

#### RHEB Polyclonal Antibody - Protein Information

Name RHEB

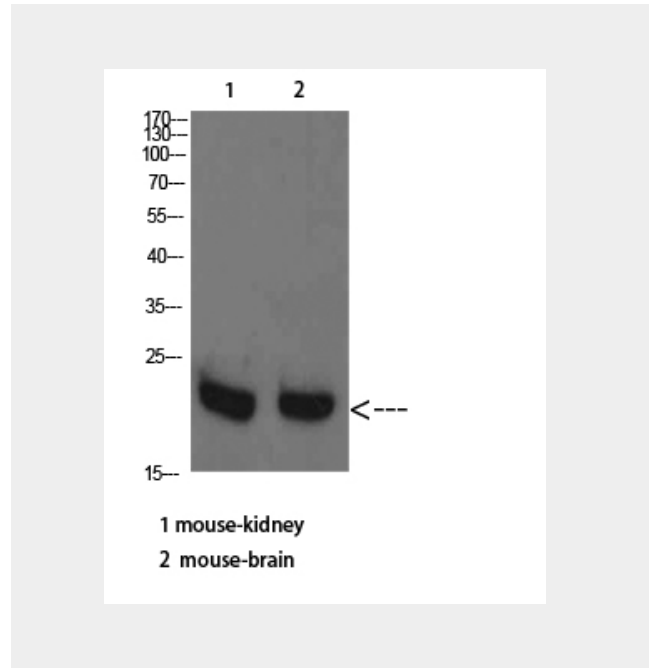
Synonyms RHEB2

#### Function

Activates the protein kinase activity of mTORC1, and thereby plays a role in the regulation of apoptosis. Stimulates the phosphorylation of S6K1 and EIF4EBP1 through activation of mTORC1 signaling. Has low intrinsic GTPase activity.

#### Cellular Location

Endomembrane system  
{ECO:0000269|PubMed:22002721,  
ECO:0000305}; Lipid-anchor  
{ECO:0000269|PubMed:22002721,



#### RHEB Polyclonal Antibody - Background

Activates the protein kinase activity of mTORC1, and thereby plays a role in the regulation of apoptosis. Stimulates the phosphorylation of S6K1 and EIF4EBP1 through activation of mTORC1 signaling. Has low intrinsic GTPase activity.

ECO:0000305}; Cytoplasmic side  
{ECO:0000269|PubMed:15489334,  
ECO:0000305}. Golgi apparatus membrane;  
Lipid-anchor; Cytoplasmic side. Cytoplasm,  
cytosol. Endoplasmic reticulum membrane;  
Lipid-anchor; Cytoplasmic side

**Tissue Location**

Ubiquitous. Highest levels observed in  
skeletal and cardiac muscle.

**RHEB Polyclonal Antibody - Protocols**

Provided below are standard protocols that you  
may find useful for product applications.

- [Western Blot](#)
- [Blocking Peptides](#)
- [Dot Blot](#)
- [Immunohistochemistry](#)
- [Immunofluorescence](#)
- [Immunoprecipitation](#)
- [Flow Cytometry](#)
- [Cell Culture](#)