

**TECPR1 Antibody (C-term)**  
**Purified Rabbit Polyclonal Antibody (Pab)**  
**Catalog # AP7391b**

**Specification**

**TECPR1 Antibody (C-term) - Product Information**

Application	<b>WB, IHC-P, FC,E</b>
Primary Accession	<a href="#">O7Z6L1</a>
Reactivity	<b>Human</b>
Host	<b>Rabbit</b>
Clonality	<b>Polyclonal</b>
Isotype	<b>Rabbit Ig</b>
Calculated MW	<b>129696</b>
Antigen Region	<b>1094-1122</b>

**TECPR1 Antibody (C-term) - Additional Information**

**Gene ID 25851**

**Other Names**

Tectonin beta-propeller repeat-containing protein 1, TECPR1, KIAA1358

**Target/Specificity**

This TECPR1 antibody is generated from rabbits immunized with a KLH conjugated synthetic peptide between 1094-1122 amino acids from the C-terminal region of human TECPR1.

**Dilution**

WB~~1:500  
IHC-P~~1:100  
FC~~1:10~50

**Format**

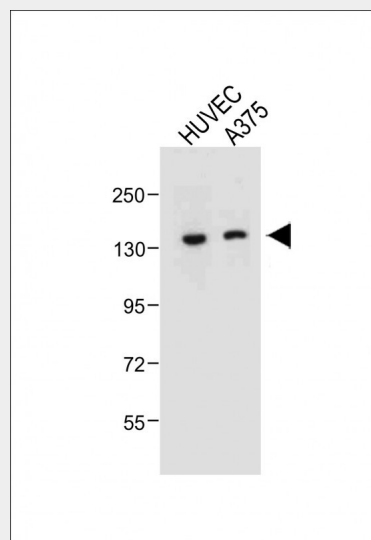
Purified polyclonal antibody supplied in PBS with 0.09% (W/V) sodium azide. This antibody is purified through a protein A column, followed by peptide affinity purification.

**Storage**

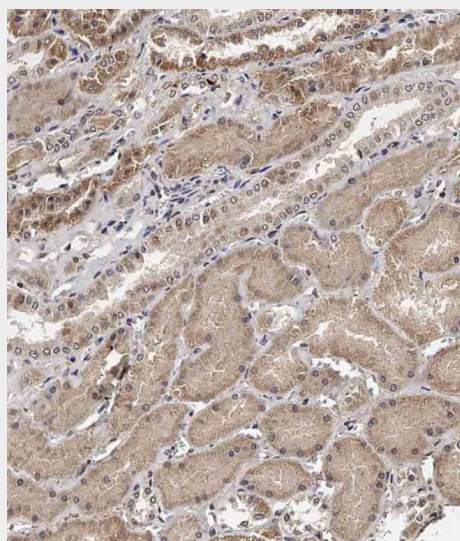
Maintain refrigerated at 2-8°C for up to 2 weeks. For long term storage store at -20°C in small aliquots to prevent freeze-thaw cycles.

**Precautions**

TECPR1 Antibody (C-term) is for research



All lanes : Anti-TECPR1 Antibody (C-term) at 1:500 dilution Lane 1: HUVEC whole cell lysate Lane 2: A375 whole cell lysate Lysates/proteins at 20 µg per lane. Secondary Goat Anti-Rabbit IgG, (H+L), Peroxidase conjugated at 1/10000 dilution. Predicted band size : 130 kDa Blocking/Dilution buffer: 5% NFD/MTBST.



Immunohistochemical analysis of AP7391b on paraffin-embedded Human kidney tissue. Tissue was fixed with formaldehyde at room

use only and not for use in diagnostic or therapeutic procedures.

#### TECPR1 Antibody (C-term) - Protein Information

**Name** TECPR1

**Synonyms** KIAA1358

#### Function

Tethering factor involved in autophagy. Involved in autophagosome maturation by promoting the autophagosome fusion with lysosomes: acts by associating with both the ATG5-ATG12 conjugate and phosphatidylinositol-3-phosphate (PtdIns(3)P) present at the surface of autophagosomes. Also involved in selective autophagy against bacterial pathogens, by being required for phagophore/preautophagosomal structure biogenesis and maturation.

#### Cellular Location

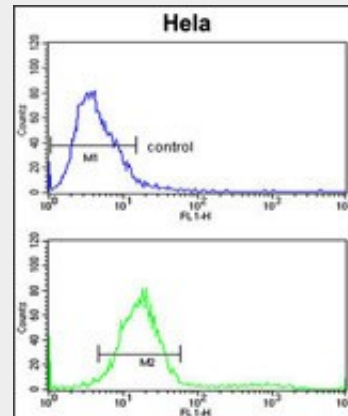
Cytoplasmic vesicle, autophagosome membrane. Lysosome membrane. Note=Localizes to Lysosome membranes, and binds PtdIns(3)P at the surface of autophagosome. Localizes to autolysosomes, a vesicle formed by the fusion between autophagosomes and lysosomes

#### TECPR1 Antibody (C-term) - Protocols

Provided below are standard protocols that you may find useful for product applications.

- [Western Blot](#)
- [Blocking Peptides](#)
- [Dot Blot](#)
- [Immunohistochemistry](#)
- [Immunofluorescence](#)
- [Immunoprecipitation](#)
- [Flow Cytometry](#)
- [Cell Culture](#)

temperature. Heat induced epitope retrieval was performed by EDTA buffer (pH9. 0). Samples were incubated with primary antibody(1:100) for 1 hour at room temperature. Undiluted CRF Anti-Polyvalent HRP Polymer antibody was used as the secondary antibody.



TECPR1 Antibody (C-term) (Cat. #AP7391b) flow cytometric analysis of HeLa cells (bottom histogram) compared to a negative control cell (top histogram).FITC-conjugated goat-anti-rabbit secondary antibodies were used for the analysis.