

**PSA Polyclonal Antibody**  
Catalog # AP73734**Specification****PSA Polyclonal Antibody - Product Information**

Application	<b>WB</b>
Primary Accession	<a href="#">P07288</a>
Reactivity	<b>Human</b>
Host	<b>Rabbit</b>
Clonality	<b>Polyclonal</b>

**PSA Polyclonal Antibody - Additional Information****Gene ID** 354**Other Names**KLK3; APS; Prostate-specific antigen; PSA;  
Gamma-seminoprotein; Seminin;  
Kallikrein-3; P-30 antigen; Semenogelase**Dilution**WB~~Western Blot: 1/500 - 1/2000. IHC-p:  
1:100-1:300. ELISA: 1/10000. Not yet tested  
in other applications.**Format**Liquid in PBS containing 50% glycerol, 0.5%  
BSA and 0.02% sodium azide.**Storage Conditions**

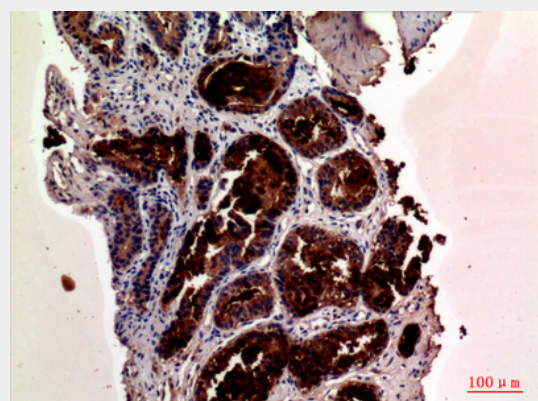
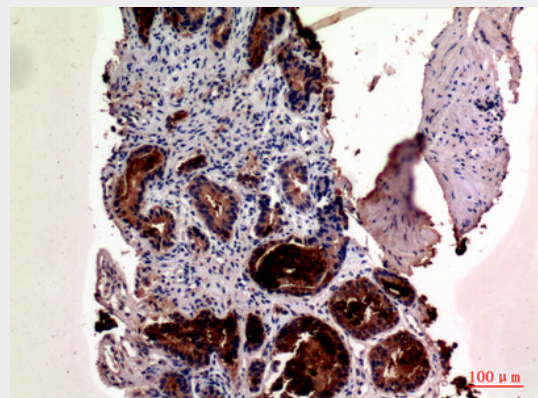
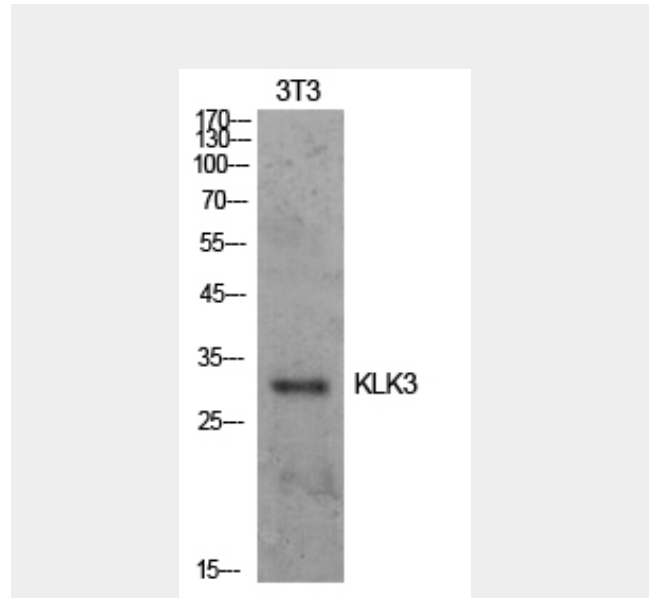
-20°C

**PSA Polyclonal Antibody - Protein Information****Name** KLK3**Synonyms** APS**Function**Hydrolyzes semenogelin-1 thus leading to  
the liquefaction of the seminal coagulum.**Cellular Location**

Secreted.

**PSA Polyclonal Antibody - Protocols**

Provided below are standard protocols that you



may find useful for product applications.

- [Western Blot](#)
- [Blocking Peptides](#)
- [Dot Blot](#)
- [Immunohistochemistry](#)
- [Immunofluorescence](#)
- [Immunoprecipitation](#)
- [Flow Cytometry](#)
- [Cell Culture](#)

### **PSA Polyclonal Antibody - Background**

Hydrolyzes semenogelin-1 thus leading to the liquefaction of the seminal coagulum.