

IFN- ω Polyclonal Antibody

Catalog # AP73598

Specification

IFN- ω Polyclonal Antibody - Product Information

Application	WB
Primary Accession	P05000
Reactivity	Human
Host	Rabbit
Clonality	Polyclonal

IFN- ω Polyclonal Antibody - Additional Information

Gene ID 3467

Other Names

IFNW1; Interferon omega-1; Interferon alpha-II-1

Dilution

WB~~Western Blot: 1/500 - 1/2000. IHC-p: 1/100-1/300. ELISA: 1/20000. Not yet tested in other applications.

Format

Liquid in PBS containing 50% glycerol, 0.5% BSA and 0.02% sodium azide.

Storage Conditions

-20°C

IFN- ω Polyclonal Antibody - Protein Information

Name IFNW1

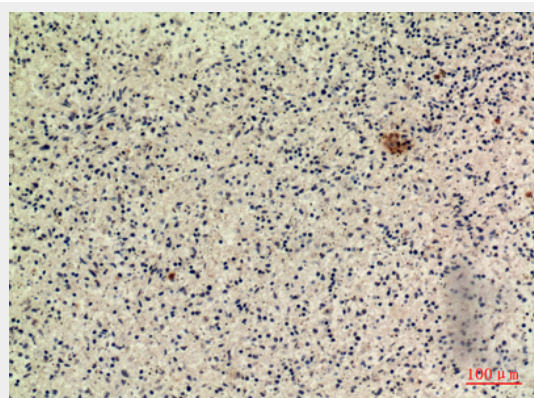
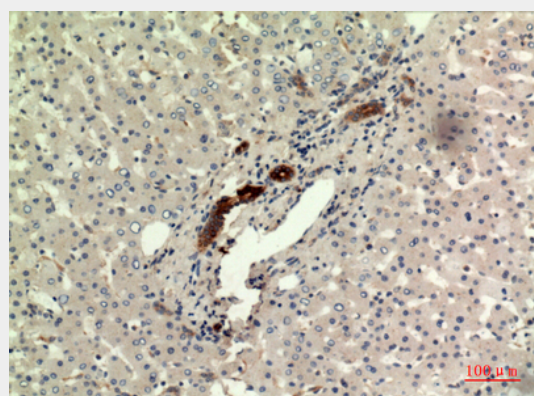
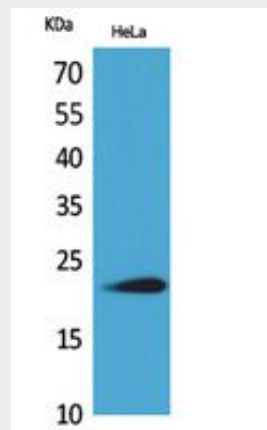
Cellular Location

Secreted.

IFN- ω Polyclonal Antibody - Protocols

Provided below are standard protocols that you may find useful for product applications.

- [Western Blot](#)
- [Blocking Peptides](#)
- [Dot Blot](#)
- [Immunohistochemistry](#)



- [Immunofluorescence](#)
- [Immunoprecipitation](#)
- [Flow Cytometry](#)
- [Cell Culture](#)

