

## IFN- $\alpha$ 1 Polyclonal Antibody

Catalog # AP73353

### Specification

#### IFN- $\alpha$ 1 Polyclonal Antibody - Product Information

Application	WB
Primary Accession	<a href="#">P01562</a>
Reactivity	Human
Host	Rabbit
Clonality	Polyclonal

#### IFN- $\alpha$ 1 Polyclonal Antibody - Additional Information

Gene ID 3439;3447

#### Other Names

IFNA1; IFNA13; Interferon alpha-1/13;  
IFN-alpha-1/13; Interferon alpha-D; LelF D

#### Dilution

WB~~Western Blot: 1/500 - 1/2000. ELISA:  
1/20000. Not yet tested in other  
applications.

#### Format

Liquid in PBS containing 50% glycerol, 0.5%  
BSA and 0.02% sodium azide.

#### Storage Conditions

-20°C

#### IFN- $\alpha$ 1 Polyclonal Antibody - Protein Information

Name IFNA1

#### Function

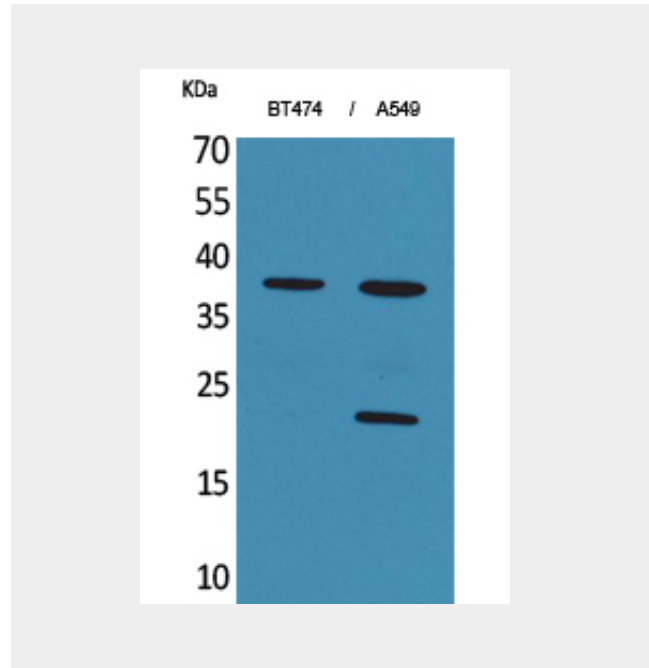
Produced by macrophages, IFN-alpha have  
antiviral activities. Interferon stimulates the  
production of two enzymes: a protein  
kinase and an oligoadenylate synthetase.

#### Cellular Location

Secreted.

#### IFN- $\alpha$ 1 Polyclonal Antibody - Protocols

Provided below are standard protocols that you



#### IFN- $\alpha$ 1 Polyclonal Antibody - Background

Produced by macrophages, IFN-alpha have  
antiviral activities. Interferon stimulates the  
production of two enzymes: a protein kinase  
and an oligoadenylate synthetase.

may find useful for product applications.

- [Western Blot](#)
- [Blocking Peptides](#)
- [Dot Blot](#)
- [Immunohistochemistry](#)
- [Immunofluorescence](#)
- [Immunoprecipitation](#)
- [Flow Cytometry](#)
- [Cell Culture](#)