

EEA1 Polyclonal Antibody

Catalog # AP73211

Specification

EEA1 Polyclonal Antibody - Product Information

Application	WB
Primary Accession	Q15075
Reactivity	Human, Mouse
Host	Rabbit
Clonality	Polyclonal

EEA1 Polyclonal Antibody - Additional Information

Gene ID 8411

Other Names

EEA1; ZFYVE2; Early endosome antigen 1; Endosome-associated protein p162; Zinc finger FYVE domain-containing protein 2

Dilution

WB~~Western Blot: 1/500 - 1/2000. ELISA: 1/20000. Not yet tested in other applications.

Format

Liquid in PBS containing 50% glycerol, 0.5% BSA and 0.02% sodium azide.

Storage Conditions

-20°C

EEA1 Polyclonal Antibody - Protein Information

Name EEA1

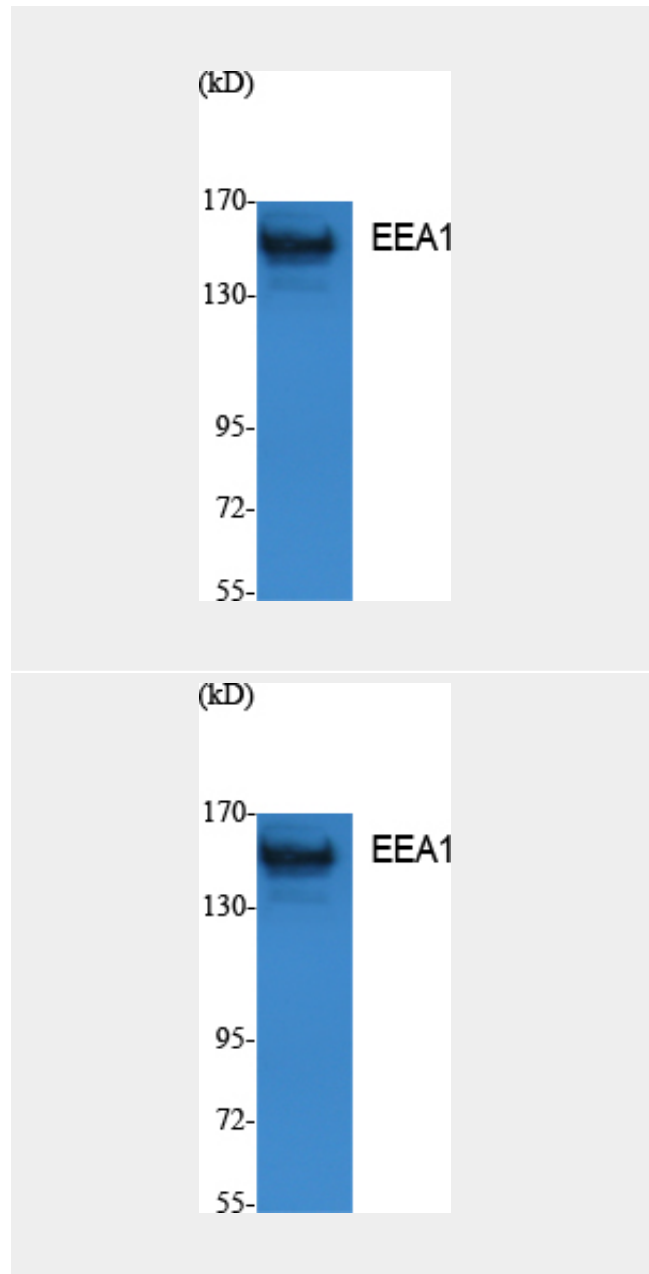
Synonyms ZFYVE2

Function

Binds phospholipid vesicles containing phosphatidylinositol 3-phosphate and participates in endosomal trafficking.

Cellular Location

Cytoplasm. Early endosome membrane; Peripheral membrane protein



EEA1 Polyclonal Antibody - Background

Binds phospholipid vesicles containing phosphatidylinositol 3-phosphate and participates in endosomal trafficking.

EEA1 Polyclonal Antibody - Protocols

Provided below are standard protocols that you may find useful for product applications.

- [Western Blot](#)
- [Blocking Peptides](#)
- [Dot Blot](#)
- [Immunohistochemistry](#)
- [Immunofluorescence](#)
- [Immunoprecipitation](#)
- [Flow Cytometry](#)
- [Cell Culture](#)