

**ALDH3A1 Polyclonal Antibody**  
Catalog # AP73208**Specification****ALDH3A1 Polyclonal Antibody - Product Information**

Application	WB
Primary Accession	<a href="#">P30838</a>
Reactivity	Human, Rat
Host	Rabbit
Clonality	Polyclonal

**ALDH3A1 Polyclonal Antibody - Additional Information**

Gene ID 218

**Other Names**

ALDH3A1; ALDH3; Aldehyde dehydrogenase, dimeric NADP-preferring; ALDHIII; Aldehyde dehydrogenase 3; Aldehyde dehydrogenase family 3 member A1

**Dilution**

WB~~Western Blot: 1/500 - 1/2000. ELISA: 1/20000. Not yet tested in other applications.

**Format**

Liquid in PBS containing 50% glycerol, 0.5% BSA and 0.02% sodium azide.

**Storage Conditions**

-20°C

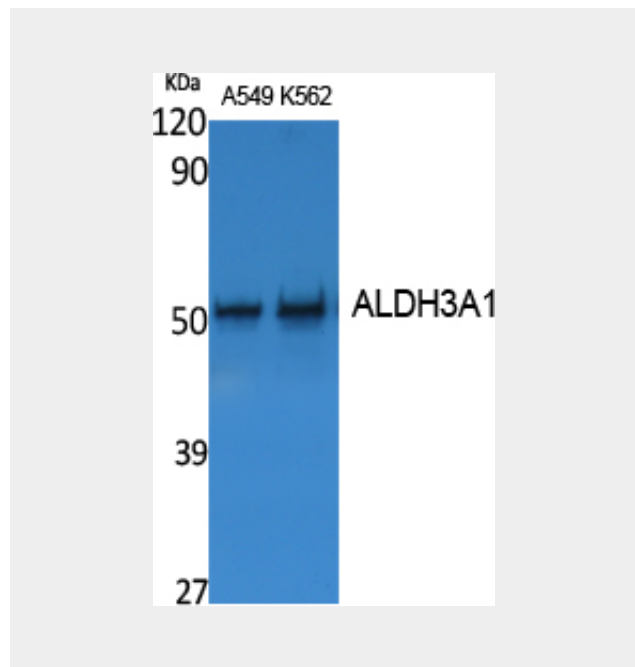
**ALDH3A1 Polyclonal Antibody - Protein Information**

Name ALDH3A1

Synonyms ALDH3

**Function**

ALDHs play a major role in the detoxification of alcohol- derived acetaldehyde (Probable). They are involved in the metabolism of corticosteroids, biogenic amines, neurotransmitters, and lipid peroxidation (Probable). Oxidizes

**ALDH3A1 Polyclonal Antibody - Background**

ALDHs play a major role in the detoxification of alcohol-derived acetaldehyde (Probable). They are involved in the metabolism of corticosteroids, biogenic amines, neurotransmitters, and lipid peroxidation (Probable). Oxidizes medium and long chain aldehydes into non-toxic fatty acids (PubMed:1737758). Preferentially oxidizes aromatic aldehyde substrates (PubMed:1737758). Comprises about 50 percent of corneal epithelial soluble proteins (By similarity). May play a role in preventing corneal damage caused by ultraviolet light (By similarity).

medium and long chain aldehydes into non-toxic fatty acids (PubMed:<a href="http://www.uniprot.org/citations/1737758" target="\_blank">1737758</a>). Preferentially oxidizes aromatic aldehyde substrates (PubMed:<a href="http://www.uniprot.org/citations/1737758" target="\_blank">1737758</a>). Comprises about 50 percent of corneal epithelial soluble proteins (By similarity). May play a role in preventing corneal damage caused by ultraviolet light (By similarity).

**Cellular Location**

Cytoplasm  
{ECO:0000250|UniProtKB:P47739}.

**Tissue Location**

High levels in stomach, esophagus and lung; low level in the liver and kidney

**ALDH3A1 Polyclonal Antibody - Protocols**

Provided below are standard protocols that you may find useful for product applications.

- [Western Blot](#)
- [Blocking Peptides](#)
- [Dot Blot](#)
- [Immunohistochemistry](#)
- [Immunofluorescence](#)
- [Immunoprecipitation](#)
- [Flow Cytometry](#)
- [Cell Culture](#)