

**UTP14A Polyclonal Antibody**  
Catalog # AP73029**Specification****UTP14A Polyclonal Antibody - Product Information**

Application	<b>WB</b>
Primary Accession	<a href="#">O9BVJ6</a>
Reactivity	<b>Human, Mouse</b>
Host	<b>Rabbit</b>
Clonality	<b>Polyclonal</b>

**UTP14A Polyclonal Antibody - Additional Information****Gene ID** 10813**Other Names**

UTP14A; SDCCAG16; U3 small nucleolar RNA-associated protein 14 homolog A; Antigen NY-CO-16; Serologically defined colon cancer antigen 16

**Dilution**WB~~Western Blot: 1/500 - 1/2000.  
Immunohistochemistry: 1/100 - 1/300.  
Immunofluorescence: 1/200 - 1/1000.  
ELISA: 1/20000. Not yet tested in other applications.**Format**

Liquid in PBS containing 50% glycerol, 0.5% BSA and 0.02% sodium azide.

**Storage Conditions**

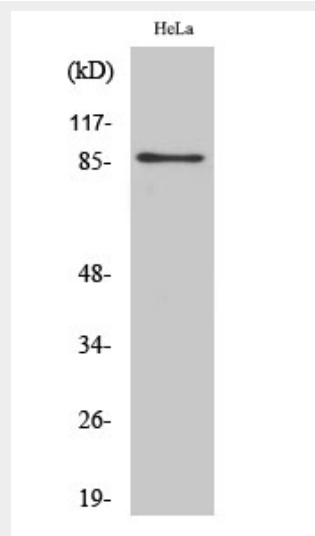
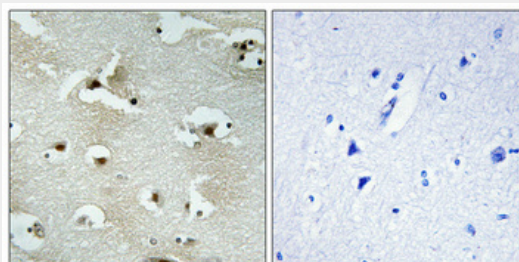
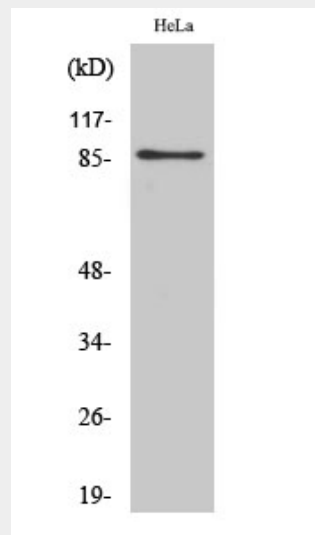
-20°C

**UTP14A Polyclonal Antibody - Protein Information****Name** UTP14A**Synonyms** SDCCAG16**Function**

May be required for ribosome biogenesis.

**Cellular Location**

Nucleus, nucleolus.

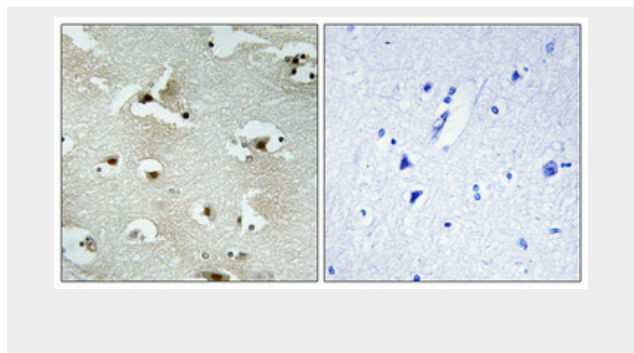
**Tissue Location**

Ubiquitously expressed.

### UTP14A Polyclonal Antibody - Protocols

Provided below are standard protocols that you may find useful for product applications.

- [Western Blot](#)
- [Blocking Peptides](#)
- [Dot Blot](#)
- [Immunohistochemistry](#)
- [Immunofluorescence](#)
- [Immunoprecipitation](#)
- [Flow Cytometry](#)
- [Cell Culture](#)



### UTP14A Polyclonal Antibody - Background

May be required for ribosome biogenesis.