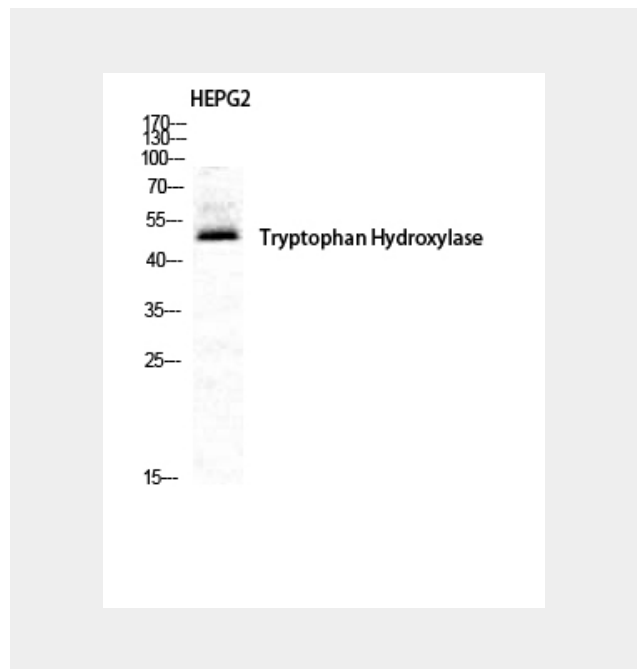


**TPH1 Polyclonal Antibody**  
Catalog # AP72893**Specification****TPH1 Polyclonal Antibody - Product Information**

Application	<b>WB</b>
Primary Accession	<a href="#">P17752</a>
Reactivity	<b>Human, Mouse, Rat</b>
Host	<b>Rabbit</b>
Clonality	<b>Polyclonal</b>

**TPH1 Polyclonal Antibody - Additional Information****Gene ID** 7166**Other Names**TPH1; TPH; TPRH; TRPH; Tryptophan  
5-hydroxylase 1; Tryptophan  
5-monoxygenase 1**Dilution**WB~~Western Blot: 1/500 - 1/2000.  
Immunohistochemistry: 1/100 - 1/300.  
Immunofluorescence: 1/200 - 1/1000.  
ELISA: 1/20000. Not yet tested in other  
applications.**Format**Liquid in PBS containing 50% glycerol, 0.5%  
BSA and 0.02% sodium azide.**Storage Conditions**

-20°C

**TPH1 Polyclonal Antibody - Protein Information****Name** TPH1**Synonyms** TPH, TPRH, TRPH**Function**Oxidizes L-tryptophan to  
5-hydroxy-L-tryptophan in the rate-  
determining step of serotonin biosynthesis.**Tissue Location**[Isoform 2]: Seems to be less widely  
expressed than isoform 1.

## **TPH1 Polyclonal Antibody - Protocols**

Provided below are standard protocols that you may find useful for product applications.

- [Western Blot](#)
- [Blocking Peptides](#)
- [Dot Blot](#)
- [Immunohistochemistry](#)
- [Immunofluorescence](#)
- [Immunoprecipitation](#)
- [Flow Cytometry](#)
- [Cell Culture](#)