

SSB Polyclonal Antibody
 Catalog # AP72608

Specification

SSB Polyclonal Antibody - Product Information

Application	WB
Primary Accession	P05455
Reactivity	Human
Host	Rabbit
Clonality	Polyclonal

SSB Polyclonal Antibody - Additional Information

Gene ID 6741

Other Names

SSB; Lupus La protein; La autoantigen; La ribonucleoprotein; Sjogren syndrome type B antigen; SS-B

Dilution

WB~~Western Blot: 1/500 - 1/2000.
 Immunohistochemistry: 1/100 - 1/300.
 ELISA: 1/40000. Not yet tested in other applications.

Format

Liquid in PBS containing 50% glycerol, 0.5% BSA and 0.02% sodium azide.

Storage Conditions

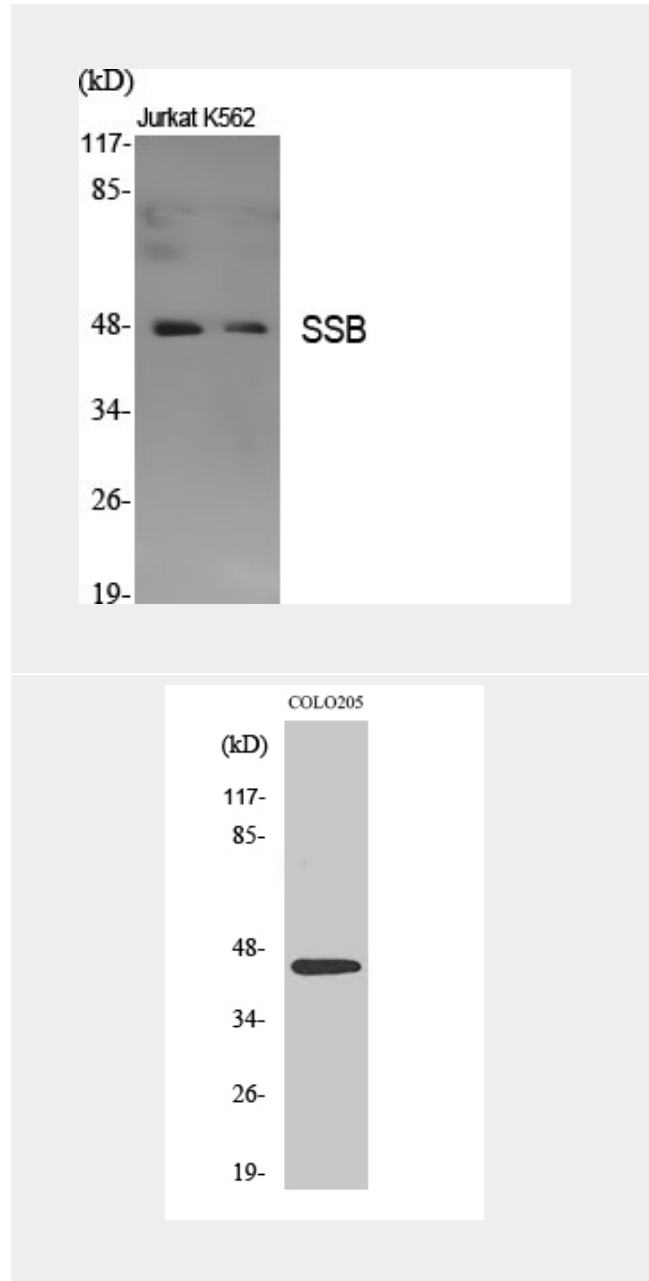
-20°C

SSB Polyclonal Antibody - Protein Information

Name SSB

Function

Binds to the 3' poly(U) terminus of nascent RNA polymerase III transcripts, protecting them from exonuclease digestion and facilitating their folding and maturation (PubMed:3192525, PubMed:2470590). In case of Coxsackievirus B3 infection, binds to the



SSB Polyclonal Antibody - Background

Binds to the 3' poly(U) terminus of nascent RNA polymerase III transcripts, protecting them from exonuclease digestion and facilitating their folding and maturation (PubMed:3192525, PubMed:2470590). In case of Coxsackievirus B3 infection, binds to the

viral internal ribosome entry site (IRES) and stimulates the IRES- mediated translation (PubMed:12384597).

Cellular Location

Nucleus.

viral internal ribosome entry site (IRES) and stimulates the IRES-mediated translation (PubMed:12384597).

SSB Polyclonal Antibody - Protocols

Provided below are standard protocols that you may find useful for product applications.

- [Western Blot](#)
- [Blocking Peptides](#)
- [Dot Blot](#)
- [Immunohistochemistry](#)
- [Immunofluorescence](#)
- [Immunoprecipitation](#)
- [Flow Cytometry](#)
- [Cell Culture](#)