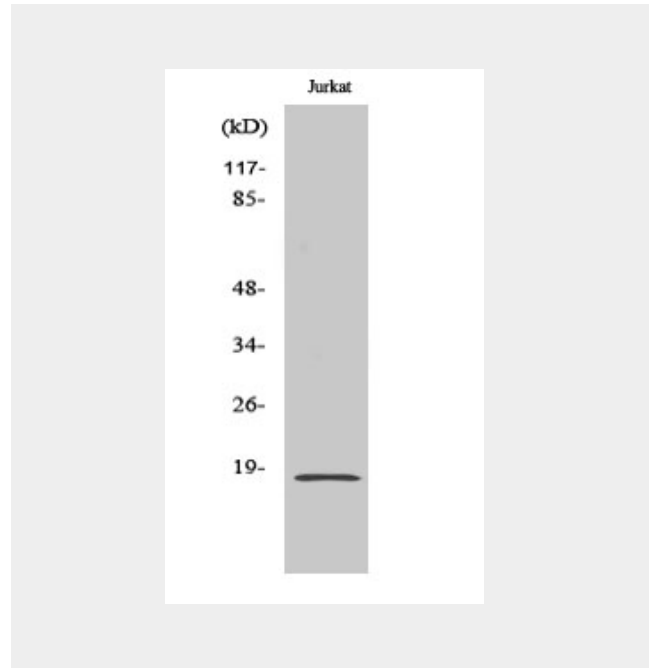


SOD-1 Polyclonal Antibody
Catalog # AP72547**Specification****SOD-1 Polyclonal Antibody - Product Information**

Application	WB
Primary Accession	P00441
Reactivity	Human, Mouse, Rat
Host	Rabbit
Clonality	Polyclonal

SOD-1 Polyclonal Antibody - Additional Information**Gene ID** 6647**Other Names**SOD1; Superoxide dismutase [Cu-Zn];
Superoxide dismutase 1; hSod1**Dilution**WB~~Western Blot: 1/500 - 1/2000. ELISA:
1/10000. Not yet tested in other
applications.**Format**Liquid in PBS containing 50% glycerol, 0.5%
BSA and 0.02% sodium azide.**Storage Conditions**

-20°C

SOD-1 Polyclonal Antibody - Protein Information**Name** SOD1**Function**Destroys radicals which are normally
produced within the cells and which are
toxic to biological systems.**Cellular Location**Cytoplasm. Mitochondrion. Nucleus.
Note=Predominantly cytoplasmic; the
pathogenic variants ALS1 Arg-86 and Ala-94
gradually aggregates and accumulates in
mitochondria.**SOD-1 Polyclonal Antibody - Background**Destroys radicals which are normally
produced within the cells and which are toxic
to biological systems.

SOD-1 Polyclonal Antibody - Protocols

Provided below are standard protocols that you may find useful for product applications.

- [Western Blot](#)
- [Blocking Peptides](#)
- [Dot Blot](#)
- [Immunohistochemistry](#)
- [Immunofluorescence](#)
- [Immunoprecipitation](#)
- [Flow Cytometry](#)
- [Cell Culture](#)