

SMG7 Polyclonal Antibody

Catalog # AP72525

Specification

SMG7 Polyclonal Antibody - Product Information

Application	WB
Primary Accession	Q92540
Reactivity	Human
Host	Rabbit
Clonality	Polyclonal

SMG7 Polyclonal Antibody - Additional Information

Gene ID 9887

Other Names

SMG7; C1orf16; EST1C; KIAA0250; Protein SMG7; EST1-like protein C; SMG-7 homolog; hSMG-7

Dilution

WB~~Western Blot: 1/500 - 1/2000.
Immunohistochemistry: 1/100 - 1/300.
Immunofluorescence: 1/200 - 1/1000.
ELISA: 1/20000. Not yet tested in other applications.

Format

Liquid in PBS containing 50% glycerol, 0.5% BSA and 0.02% sodium azide.

Storage Conditions

-20°C

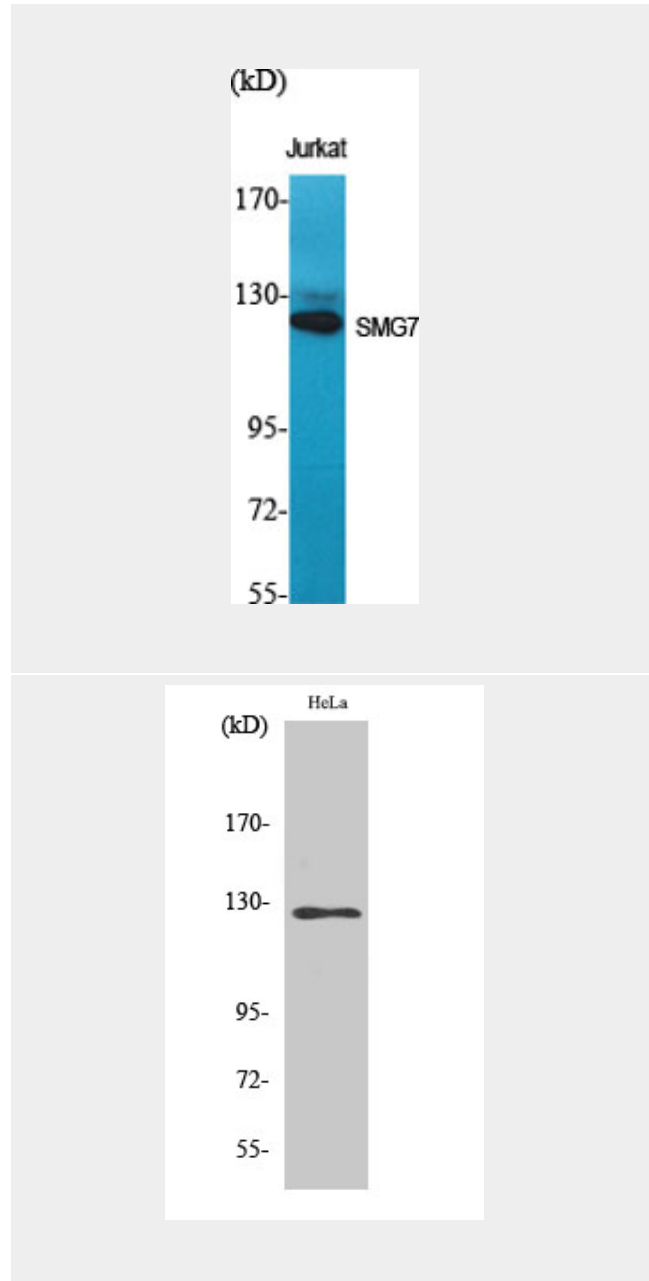
SMG7 Polyclonal Antibody - Protein Information

Name SMG7

Synonyms C1orf16, EST1C, KIAA0250

Function

Plays a role in nonsense-mediated mRNA decay. Recruits UPF1 to cytoplasmic mRNA decay bodies. Together with SMG5 is thought to provide a link to the mRNA degradation machinery involving exonucleolytic pathways, and to serve as an adapter for UPF1 to protein phosphatase 2A (PP2A), thereby triggering UPF1



SMG7 Polyclonal Antibody - Background

Plays a role in nonsense-mediated mRNA decay. Recruits UPF1 to cytoplasmic mRNA decay bodies. Together with SMG5 is thought to provide a link to the mRNA degradation machinery involving exonucleolytic pathways, and to serve as an adapter for UPF1 to protein

dephosphorylation.

phosphatase 2A (PP2A), thereby triggering UPF1 dephosphorylation.

Cellular Location

Cytoplasm. Nucleus. Note=Predominantly cytoplasmic, and nuclear. Shuttles between nucleus and cytoplasm

SMG7 Polyclonal Antibody - Protocols

Provided below are standard protocols that you may find useful for product applications.

- [Western Blot](#)
- [Blocking Peptides](#)
- [Dot Blot](#)
- [Immunohistochemistry](#)
- [Immunofluorescence](#)
- [Immunoprecipitation](#)
- [Flow Cytometry](#)
- [Cell Culture](#)