

SLU7 Polyclonal Antibody

Catalog # AP72505

Specification

SLU7 Polyclonal Antibody - Product Information

Application	WB
Primary Accession	O95391
Reactivity	Human, Mouse, Rat
Host	Rabbit
Clonality	Polyclonal

SLU7 Polyclonal Antibody - Additional Information

Gene ID 10569

Other Names

SLU7; Pre-mRNA-splicing factor SLU7; hSlu7

Dilution

WB~~Western Blot: 1/500 - 1/2000. ELISA: 1/40000. Not yet tested in other applications.

Format

Liquid in PBS containing 50% glycerol, 0.5% BSA and 0.02% sodium azide.

Storage Conditions

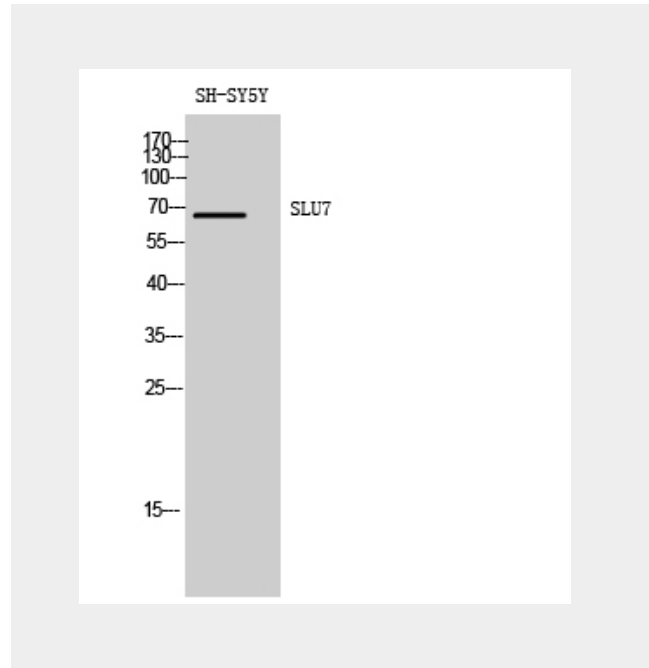
-20°C

SLU7 Polyclonal Antibody - Protein Information

Name SLU7

Function

Required for pre-mRNA splicing as component of the spliceosome (PubMed:10197984, PubMed:28502770, PubMed:30705154). Participates in the second catalytic step of pre-mRNA splicing, when the free hydroxyl group of exon I attacks the 3'-splice site to



SLU7 Polyclonal Antibody - Background

Participates in the second catalytic step of pre-mRNA splicing, when the free hydroxyl group of exon I attacks the 3'- splice site to generate spliced mRNA and the excised lariat intron. Required for holding exon 1 properly in the spliceosome and for correct AG identification when more than one possible AG exists in 3'-splicing site region. May be involved in the activation of proximal AG. Probably also involved in alternative splicing regulation.

generate spliced mRNA and the excised lariat intron. Required for holding exon 1 properly in the spliceosome and for correct AG identification when more than one possible AG exists in 3'-splicing site region. May be involved in the activation of proximal AG. Probably also involved in alternative splicing regulation.

Cellular Location

Nucleus. Nucleus speckle. Cytoplasm
Note=Predominantly nuclear. Shuttling between the nucleus and the cytoplasm is regulated by the CCHC-type zinc finger. Upon UV-C stress stimulus, the nuclear concentration of the protein decreases, affecting alternative splicing. Translocates from the nucleus to the cytoplasm after heat shock cell treatment. Accumulates in cytoplasmic vesicle-like organelles after heat shock treatment, which may represent stress granules.

SLU7 Polyclonal Antibody - Protocols

Provided below are standard protocols that you may find useful for product applications.

- [Western Blot](#)
- [Blocking Peptides](#)
- [Dot Blot](#)
- [Immunohistochemistry](#)
- [Immunofluorescence](#)
- [Immunoprecipitation](#)
- [Flow Cytometry](#)
- [Cell Culture](#)