

SgK288 Polyclonal Antibody

Catalog # AP72455

Specification

SgK288 Polyclonal Antibody - Product Information

Application	WB
Primary Accession	O8NFD2
Reactivity	Human
Host	Rabbit
Clonality	Polyclonal

SgK288 Polyclonal Antibody - Additional Information

Gene ID 255239

Other Names

ANKK1; PKK2; SGK288; Ankyrin repeat and protein kinase domain-containing protein 1; Protein kinase PKK2; Sugen kinase 288; SgK288; X-kinase

Dilution

WB~~Western Blot: 1/500 - 1/2000. ELISA: 1/20000. Not yet tested in other applications.

Format

Liquid in PBS containing 50% glycerol, 0.5% BSA and 0.02% sodium azide.

Storage Conditions

-20°C

SgK288 Polyclonal Antibody - Protein Information

Name ANKK1

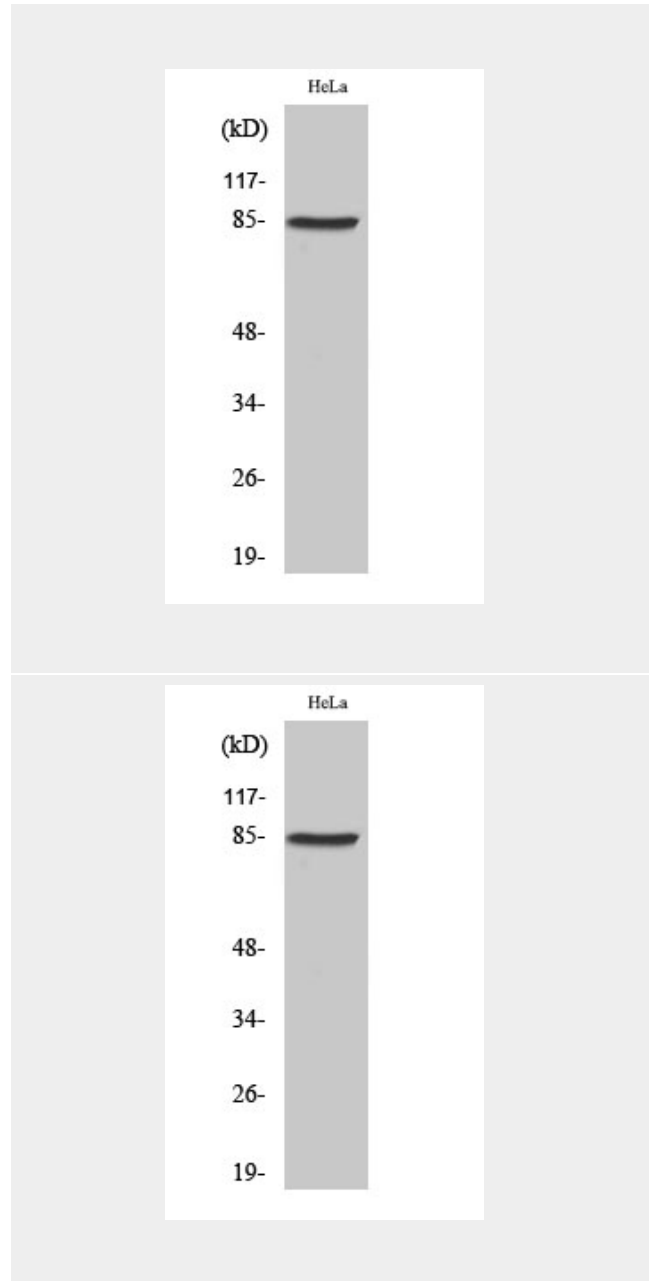
Synonyms PKK2, SGK288

Tissue Location

Highly expressed in brain and weakly expressed in placenta and spinal cord.

SgK288 Polyclonal Antibody - Protocols

Provided below are standard protocols that you



may find useful for product applications.

- [Western Blot](#)
- [Blocking Peptides](#)
- [Dot Blot](#)
- [Immunohistochemistry](#)
- [Immunofluorescence](#)
- [Immunoprecipitation](#)
- [Flow Cytometry](#)
- [Cell Culture](#)