

Ribosomal Protein L39 Polyclonal Antibody Catalog # AP72296

Specification

Ribosomal Protein L39 Polyclonal Antibody - Product Information

Application **WB**
Primary Accession [P62891](#)
Reactivity **Human, Mouse,
Rat**
Host **Rabbit**
Clonality **Polyclonal**

Ribosomal Protein L39 Polyclonal Antibody - Additional Information

Gene ID 6170

Other Names

RPL39; 60S ribosomal protein L39

Dilution

WB~~Western Blot: 1/500 - 1/2000.
Immunohistochemistry: 1/100 - 1/300.
Immunofluorescence: 1/200 - 1/1000.
ELISA: 1/40000. Not yet tested in other
applications.

Format

Liquid in PBS containing 50% glycerol, 0.5%
BSA and 0.02% sodium azide.

Storage Conditions

-20°C

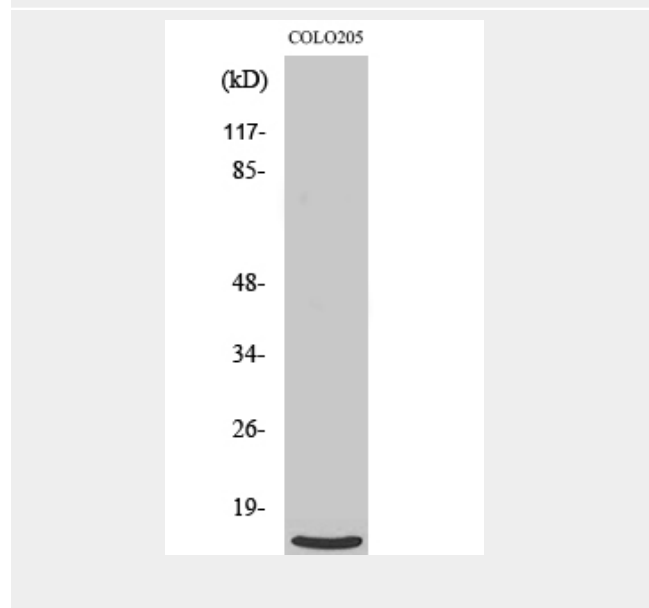
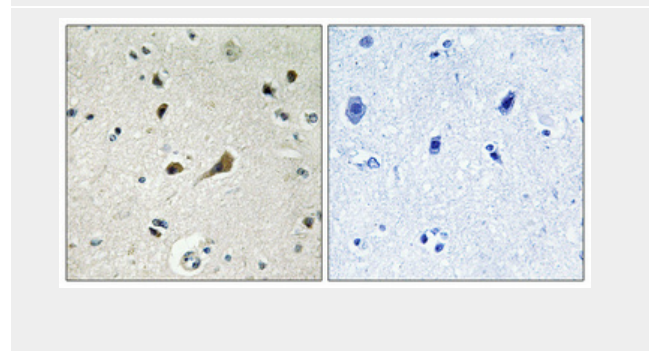
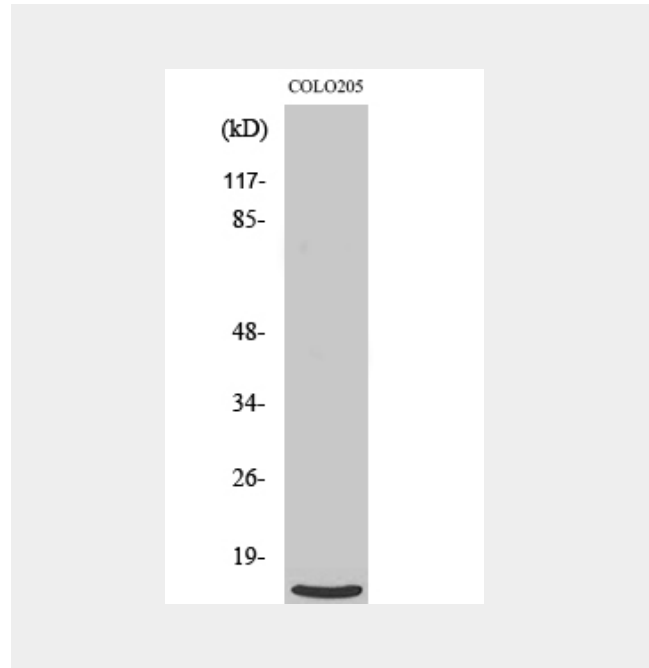
Ribosomal Protein L39 Polyclonal Antibody - Protein Information

Name RPL39

Ribosomal Protein L39 Polyclonal Antibody - Protocols

Provided below are standard protocols that you
may find useful for product applications.

- [Western Blot](#)
- [Blocking Peptides](#)



- [Dot Blot](#)
- [Immunohistochemistry](#)
- [Immunofluorescence](#)
- [Immunoprecipitation](#)
- [Flow Cytometry](#)
- [Cell Culture](#)

