

PLK-5 Polyclonal Antibody
 Catalog # AP71981

Specification

PLK-5 Polyclonal Antibody - Product Information

Application	WB
Primary Accession	Q496M5
Reactivity	Human
Host	Rabbit
Clonality	Polyclonal

PLK-5 Polyclonal Antibody - Additional Information

Gene ID 126520

Other Names

PLK5; PLK5P; FG060302; Inactive serine/threonine-protein kinase PLK5; Polo-like kinase 5; PLK-5

Dilution

WB~~Western Blot: 1/500 - 1/2000. ELISA: 1/10000. Not yet tested in other applications.

Format

Liquid in PBS containing 50% glycerol, 0.5% BSA and 0.02% sodium azide.

Storage Conditions

-20°C

PLK-5 Polyclonal Antibody - Protein Information

Name PLK5

Synonyms PLK5P

Function

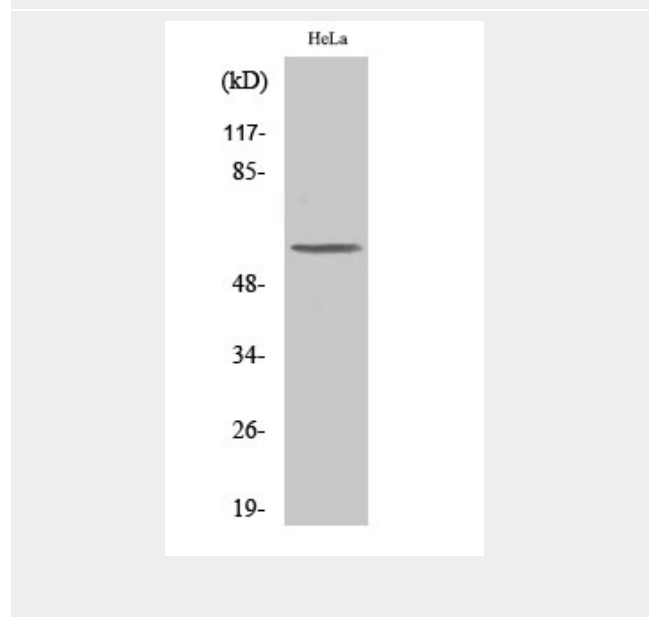
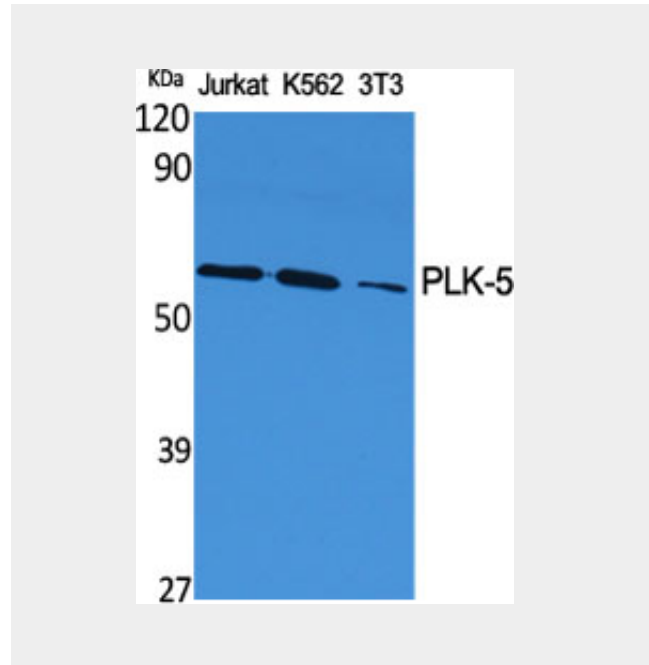
Inactive serine/threonine-protein kinase that plays a role in cell cycle progression and neuronal differentiation.

Cellular Location

Nucleus, nucleolus. Cytoplasm

Tissue Location

Expressed in the brain, neurons and glial cells. Also expressed in highly differentiated



PLK-5 Polyclonal Antibody - Background

Inactive serine/threonine-protein kinase that plays a role in cell cycle progression and neuronal differentiation.

cells, such as the serous acini in the parotid gland, distal and proximal tubules of the kidney, tubules of the seminal gland, Kupffer cells and some hepatocytes in the liver, and some cells in the germinal center of lymph nodes (at protein level).

PLK-5 Polyclonal Antibody - Protocols

Provided below are standard protocols that you may find useful for product applications.

- [Western Blot](#)
- [Blocking Peptides](#)
- [Dot Blot](#)
- [Immunohistochemistry](#)
- [Immunofluorescence](#)
- [Immunoprecipitation](#)
- [Flow Cytometry](#)
- [Cell Culture](#)