

Plasminogen Polyclonal Antibody Catalog # AP71969

Specification

Plasminogen Polyclonal Antibody - Product Information

Application	IHC
Primary Accession	P00747
Reactivity	Human
Host	Rabbit
Clonality	Polyclonal

Plasminogen Polyclonal Antibody - Additional Information

Gene ID 5340

Other Names

PLG; Plasminogen

Dilution

IHC~~IHC-p: 100-300. Western Blot: 1/500 - 1/2000. ELISA: 1/40000. Not yet tested in other applications.

Format

Liquid in PBS containing 50% glycerol, 0.5% BSA and 0.02% sodium azide.

Storage Conditions

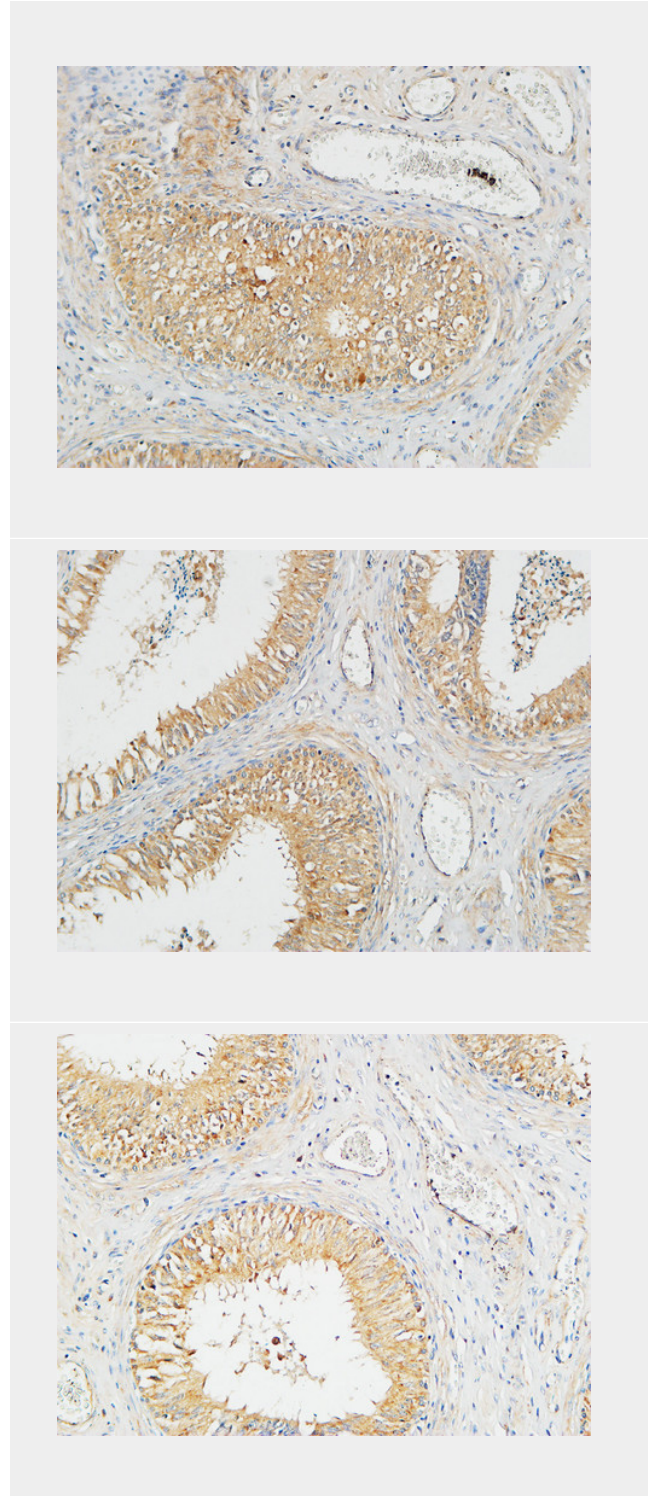
-20°C

Plasminogen Polyclonal Antibody - Protein Information

Name PLG

Function

Plasmin dissolves the fibrin of blood clots and acts as a proteolytic factor in a variety of other processes including embryonic development, tissue remodeling, tumor invasion, and inflammation. In ovulation, weakens the walls of the Graafian follicle. It activates the urokinase-type plasminogen activator, collagenases and several complement zymogens, such as C1 and C5. Cleavage of fibronectin and laminin leads to cell detachment and apoptosis. Also cleaves fibrin, thrombospondin and von Willebrand



Plasminogen Polyclonal Antibody - Background

factor. Its role in tissue remodeling and tumor invasion may be modulated by CSPG4. Binds to cells.

Cellular Location

Secreted. Note=Locates to the cell surface where it is proteolytically cleaved to produce the active plasmin. Interaction with HRG tethers it to the cell surface

Tissue Location

Present in plasma and many other extracellular fluids. It is synthesized in the liver

Plasmin dissolves the fibrin of blood clots and acts as a proteolytic factor in a variety of other processes including embryonic development, tissue remodeling, tumor invasion, and inflammation. In ovulation, weakens the walls of the Graafian follicle. It activates the urokinase-type plasminogen activator, collagenases and several complement zymogens, such as C1 and C5. Cleavage of fibronectin and laminin leads to cell detachment and apoptosis. Also cleaves fibrin, thrombospondin and von Willebrand factor. Its role in tissue remodeling and tumor invasion may be modulated by CSPG4. Binds to cells.

Plasminogen Polyclonal Antibody - Protocols

Provided below are standard protocols that you may find useful for product applications.

- [Western Blot](#)
- [Blocking Peptides](#)
- [Dot Blot](#)
- [Immunohistochemistry](#)
- [Immunofluorescence](#)
- [Immunoprecipitation](#)
- [Flow Cytometry](#)
- [Cell Culture](#)