

**PIAS 3 Polyclonal Antibody**  
 Catalog # AP71901

**Specification**

**PIAS 3 Polyclonal Antibody - Product Information**

Application	<b>WB</b>
Primary Accession	<a href="#">Q9Y6X2</a>
Reactivity	<b>Human, Mouse, Rat</b>
Host	<b>Rabbit</b>
Clonality	<b>Polyclonal</b>

**PIAS 3 Polyclonal Antibody - Additional Information**

**Gene ID** 10401

**Other Names**

PIAS3; E3 SUMO-protein ligase PIAS3;  
 Protein inhibitor of activated STAT protein 3

**Dilution**

WB~~Western Blot: 1/500 - 1/2000.  
 Immunohistochemistry: 1/100 - 1/300.  
 ELISA: 1/10000. Not yet tested in other applications.

**Format**

Liquid in PBS containing 50% glycerol, 0.5% BSA and 0.02% sodium azide.

**Storage Conditions**

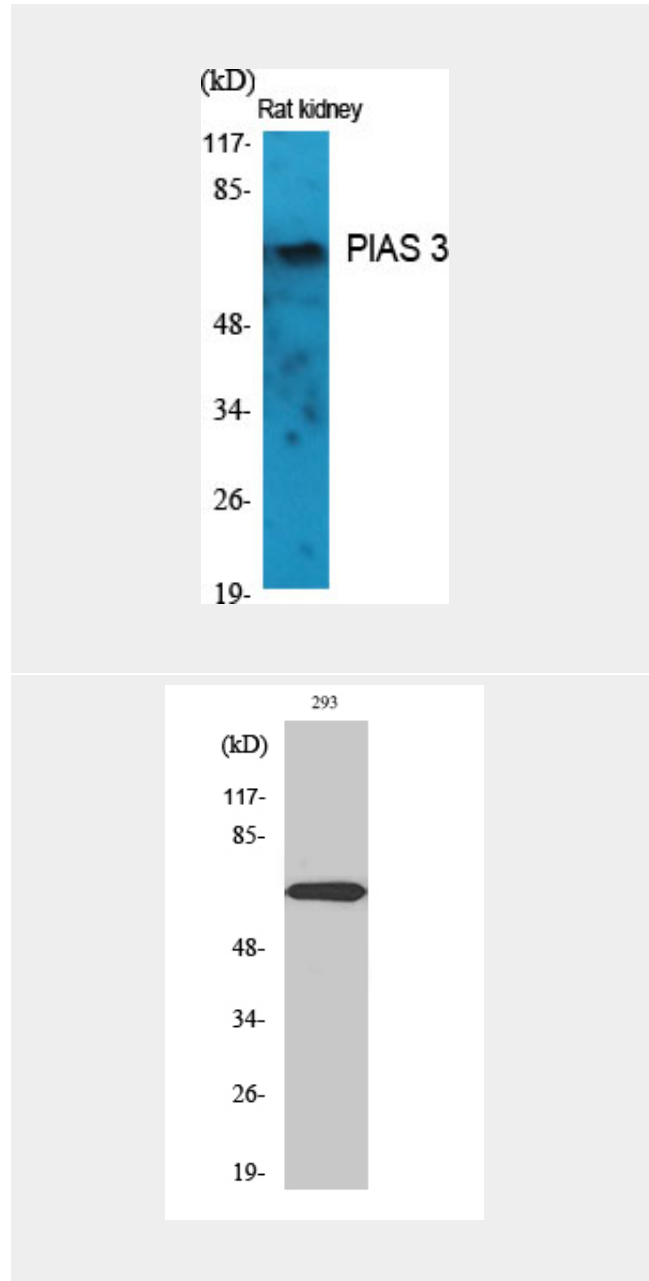
-20°C

**PIAS 3 Polyclonal Antibody - Protein Information**

**Name** PIAS3

**Function**

Functions as an E3-type small ubiquitin-like modifier (SUMO) ligase, stabilizing the interaction between UBE2I and the substrate, and as a SUMO-tethering factor. Plays a crucial role as a transcriptional coregulation in various cellular pathways, including the STAT pathway and the steroid hormone signaling pathway. Involved in regulating STAT3 signaling via inhibiting STAT3 DNA-binding and suppressing cell growth. Enhances the sumoylation of MTA1



**PIAS 3 Polyclonal Antibody - Background**

Functions as an E3-type small ubiquitin-like modifier (SUMO) ligase, stabilizing the interaction between UBE2I and the substrate, and as a SUMO-tethering factor. Plays a crucial role as a transcriptional coregulation in various cellular pathways, including the STAT pathway

and may participate in its paralog-selective sumoylation (PubMed:<a href="http://www.uniprot.org/citations/21965678" target="\_blank">21965678</a>, PubMed:<a href="http://www.uniprot.org/citations/9388184" target="\_blank">9388184</a>). Sumoylates CCAR2 which promotes its interaction with SIRT1 (PubMed:<a href="http://www.uniprot.org/citations/25406032" target="\_blank">25406032</a>). Diminishes the sumoylation of ZFH3 by preventing the colocalization of ZFH3 with SUMO1 in the nucleus (PubMed:<a href="http://www.uniprot.org/citations/24651376" target="\_blank">24651376</a>).

#### Cellular Location

Cytoplasm

{ECO:0000250|UniProtKB:O54714}.

Nucleus

{ECO:0000250|UniProtKB:O54714}.

Nucleus speckle

{ECO:0000250|UniProtKB:O54714}.

Note=Colocalizes with MITF in the nucleus.

Colocalizes with GFI1 in nuclear dots.

Colocalizes with SUMO1 in nuclear granules.

{ECO:0000250|UniProtKB:O54714}

#### Tissue Location

Widely expressed..

and the steroid hormone signaling pathway. Involved in regulating STAT3 signaling via inhibiting STAT3 DNA-binding and suppressing cell growth. Enhances the sumoylation of MTA1 and may participate in its paralog-selective sumoylation (PubMed:21965678, PubMed:9388184). Sumoylates CCAR2 which promotes its interaction with SIRT1 (PubMed:25406032). Diminishes the sumoylation of ZFH3 by preventing the colocalization of ZFH3 with SUMO1 in the nucleus (PubMed:24651376).

### PIAS 3 Polyclonal Antibody - Protocols

Provided below are standard protocols that you may find useful for product applications.

- [Western Blot](#)
- [Blocking Peptides](#)
- [Dot Blot](#)
- [Immunohistochemistry](#)
- [Immunofluorescence](#)
- [Immunoprecipitation](#)
- [Flow Cytometry](#)
- [Cell Culture](#)