

MRP-S25 Polyclonal Antibody

Catalog # AP71066

Specification

MRP-S25 Polyclonal Antibody - Product Information

Application **WB**
Primary Accession [P82663](#)
Reactivity **Human, Mouse, Rat**
Host **Rabbit**
Clonality **Polyclonal**

MRP-S25 Polyclonal Antibody - Additional Information

Gene ID 64432

Other Names

MRPS25; RPMS25; 28S ribosomal protein S25; mitochondrial; MRP-S25; S25mt

Dilution

WB~~Western Blot: 1/500 - 1/2000. ELISA: 1/40000. Not yet tested in other applications.

Format

Liquid in PBS containing 50% glycerol, 0.5% BSA and 0.02% sodium azide.

Storage Conditions

-20°C

MRP-S25 Polyclonal Antibody - Protein Information

Name MRPS25

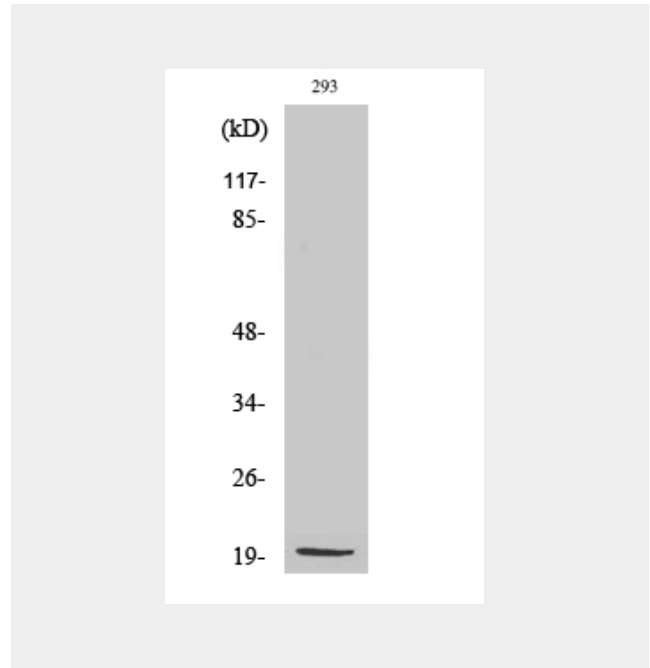
Synonyms RPMS25

Cellular Location

Mitochondrion.

MRP-S25 Polyclonal Antibody - Protocols

Provided below are standard protocols that you may find useful for product applications.



- [Western Blot](#)
- [Blocking Peptides](#)
- [Dot Blot](#)
- [Immunohistochemistry](#)
- [Immunofluorescence](#)
- [Immunoprecipitation](#)
- [Flow Cytometry](#)
- [Cell Culture](#)