

MRP-L44 Polyclonal Antibody
 Catalog # AP71047

Specification

MRP-L44 Polyclonal Antibody - Product Information

Application	WB
Primary Accession	O9H9J2
Reactivity	Human, Mouse, Rat, Monkey
Host	Rabbit
Clonality	Polyclonal

MRP-L44 Polyclonal Antibody - Additional Information

Gene ID 65080

Other Names

MRPL44; 39S ribosomal protein L44; mitochondrial; L44mt; MRP-L44

Dilution

WB~~Western Blot: 1/500 - 1/2000.
 Immunohistochemistry: 1/100 - 1/300.
 Immunofluorescence: 1/200 - 1/1000.
 ELISA: 1/40000. Not yet tested in other applications.

Format

Liquid in PBS containing 50% glycerol, 0.5% BSA and 0.02% sodium azide.

Storage Conditions

-20°C

MRP-L44 Polyclonal Antibody - Protein Information

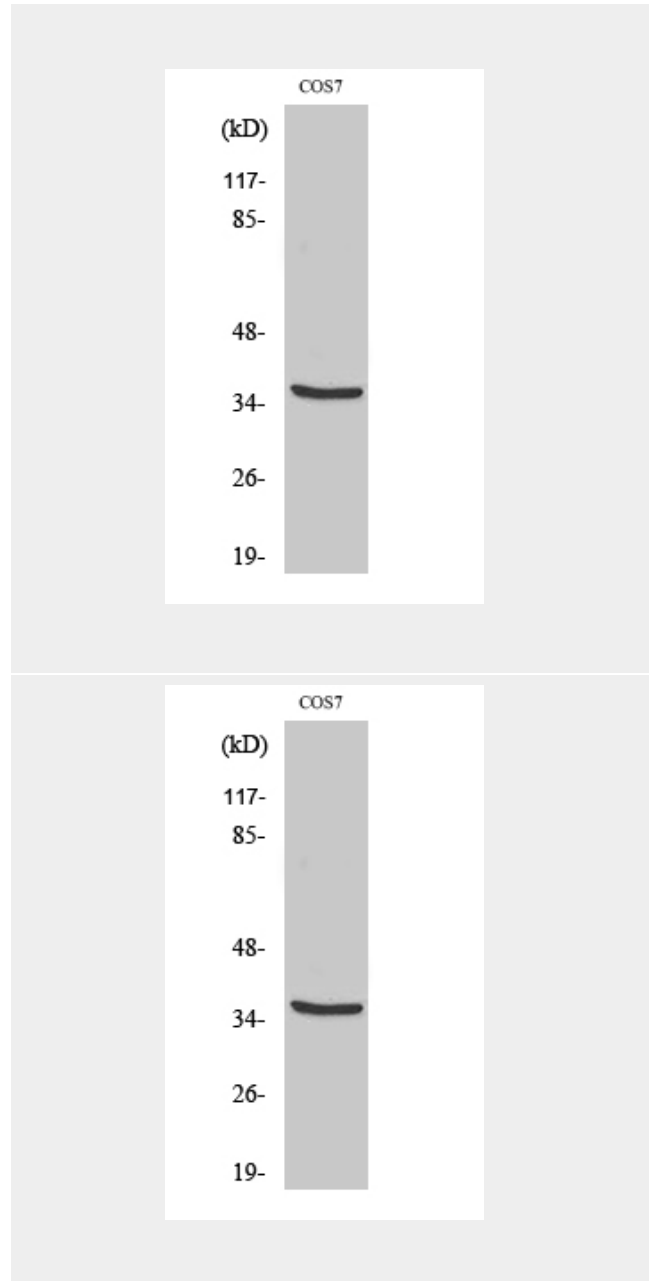
Name MRPL44

Function

Component of the 39S subunit of mitochondrial ribosome. May have a function in the assembly/stability of nascent mitochondrial polypeptides exiting the ribosome.

Cellular Location

Mitochondrion



MRP-L44 Polyclonal Antibody - Background

Component of the 39S subunit of mitochondrial ribosome. May have a function in the assembly/stability of nascent mitochondrial polypeptides exiting the ribosome.

MRP-L44 Polyclonal Antibody - Protocols

Provided below are standard protocols that you may find useful for product applications.

- [Western Blot](#)
- [Blocking Peptides](#)
- [Dot Blot](#)
- [Immunohistochemistry](#)
- [Immunofluorescence](#)
- [Immunoprecipitation](#)
- [Flow Cytometry](#)
- [Cell Culture](#)