

## MRP-L32 Polyclonal Antibody

Catalog # AP71040

### Specification

#### MRP-L32 Polyclonal Antibody - Product Information

Application	<b>WB</b>
Primary Accession	<a href="#">O9BYC8</a>
Reactivity	<b>Human</b>
Host	<b>Rabbit</b>
Clonality	<b>Polyclonal</b>

#### MRP-L32 Polyclonal Antibody - Additional Information

Gene ID 64983

#### Other Names

MRPL32; HSPC283; 39S ribosomal protein L32; mitochondrial; L32mt; MRP-L32

#### Dilution

WB~~Western Blot: 1/500 - 1/2000.  
Immunohistochemistry: 1/100 - 1/300.  
Immunofluorescence: 1/200 - 1/1000.  
ELISA: 1/40000. Not yet tested in other applications.

#### Format

Liquid in PBS containing 50% glycerol, 0.5% BSA and 0.02% sodium azide.

#### Storage Conditions

-20°C

#### MRP-L32 Polyclonal Antibody - Protein Information

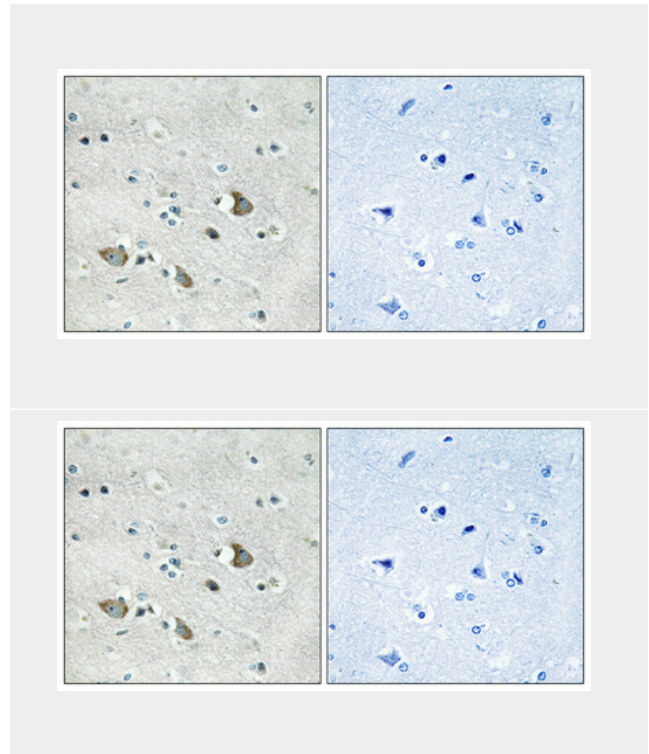
Name MRPL32

#### Cellular Location

Mitochondrion

### MRP-L32 Polyclonal Antibody - Protocols

Provided below are standard protocols that you may find useful for product applications.



- [Western Blot](#)
- [Blocking Peptides](#)
- [Dot Blot](#)
- [Immunohistochemistry](#)
- [Immunofluorescence](#)
- [Immunoprecipitation](#)
- [Flow Cytometry](#)
- [Cell Culture](#)