

MRP-L11 Polyclonal Antibody
Catalog # AP71027**Specification****MRP-L11 Polyclonal Antibody - Product Information**

Application	WB
Primary Accession	O9Y3B7
Reactivity	Human, Monkey
Host	Rabbit
Clonality	Polyclonal

MRP-L11 Polyclonal Antibody - Additional Information**Gene ID** 65003**Other Names**

MRPL11; CGI-113; 39S ribosomal protein L11; mitochondrial; L11mt; MRP-L11

DilutionWB~~Western Blot: 1/500 - 1/2000.
Immunohistochemistry: 1/100 - 1/300.
Immunofluorescence: 1/200 - 1/1000.
ELISA: 1/40000. Not yet tested in other applications.**Format**

Liquid in PBS containing 50% glycerol, 0.5% BSA and 0.02% sodium azide.

Storage Conditions

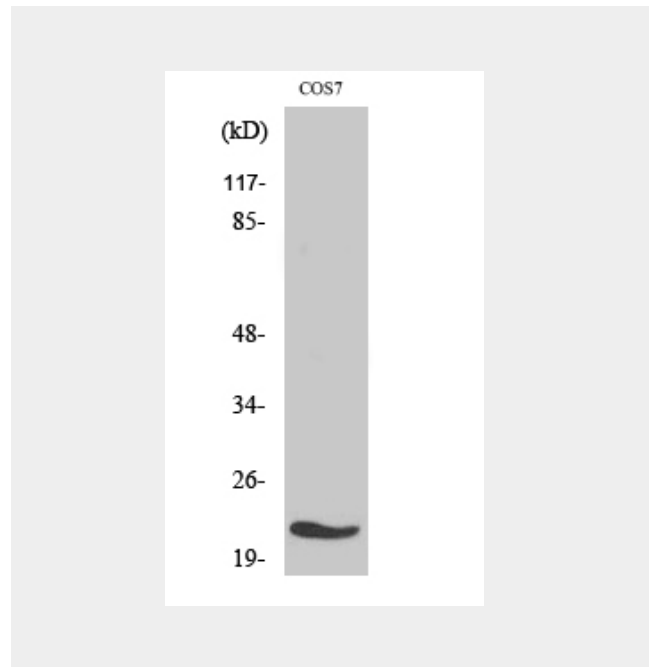
-20°C

MRP-L11 Polyclonal Antibody - Protein Information**Name** MRPL11**Cellular Location**

Mitochondrion

MRP-L11 Polyclonal Antibody - Protocols

Provided below are standard protocols that you may find useful for product applications.



- [Western Blot](#)
- [Blocking Peptides](#)
- [Dot Blot](#)
- [Immunohistochemistry](#)
- [Immunofluorescence](#)
- [Immunoprecipitation](#)
- [Flow Cytometry](#)
- [Cell Culture](#)