

MASP-2 Polyclonal Antibody

Catalog # AP70839

Specification

MASP-2 Polyclonal Antibody - Product Information

Application	WB
Primary Accession	O00187
Reactivity	Human
Host	Rabbit
Clonality	Polyclonal

MASP-2 Polyclonal Antibody - Additional Information

Gene ID 10747

Other Names

MASP2; Mannan-binding lectin serine protease 2; MBL-associated serine protease 2; Mannose-binding protein-associated serine protease 2; MASP-2

Dilution

WB~~Western Blot: 1/500 - 1/2000. ELISA: 1/20000. Not yet tested in other applications.

Format

Liquid in PBS containing 50% glycerol, 0.5% BSA and 0.02% sodium azide.

Storage Conditions

-20°C

MASP-2 Polyclonal Antibody - Protein Information

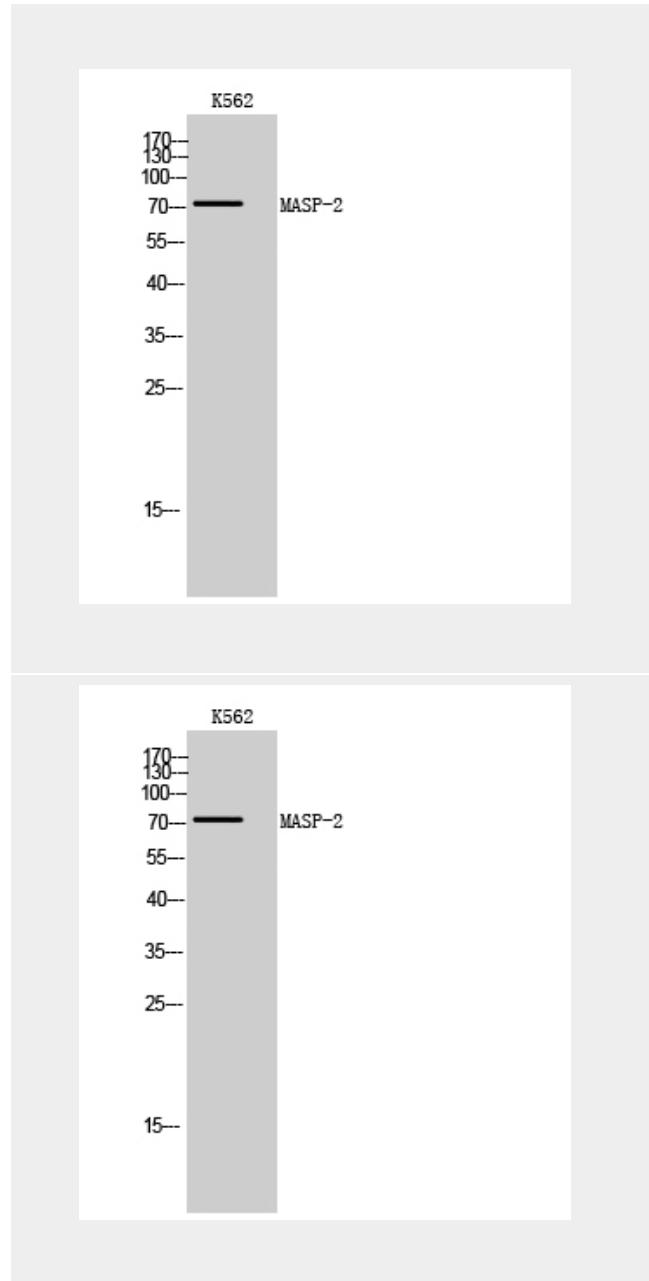
Name MASP2

Function

Serum protease that plays an important role in the activation of the complement system via mannan-binding lectin. After activation by auto-catalytic cleavage it cleaves C2 and C4, leading to their activation and to the formation of C3 convertase.

Cellular Location

Secreted.



MASP-2 Polyclonal Antibody - Background

Serum protease that plays an important role in the activation of the complement system via mannan-binding lectin. After activation by auto-catalytic cleavage it cleaves C2 and C4, leading to their activation and to the formation of C3 convertase.

Tissue Location

Plasma.

MASP-2 Polyclonal Antibody - Protocols

Provided below are standard protocols that you may find useful for product applications.

- [Western Blot](#)
- [Blocking Peptides](#)
- [Dot Blot](#)
- [Immunohistochemistry](#)
- [Immunofluorescence](#)
- [Immunoprecipitation](#)
- [Flow Cytometry](#)
- [Cell Culture](#)