

IRS-1 Polyclonal Antibody

Catalog # AP70586

Specification

IRS-1 Polyclonal Antibody - Product Information

Application	WB
Primary Accession	P35568
Reactivity	Human, Mouse, Rat
Host	Rabbit
Clonality	Polyclonal

IRS-1 Polyclonal Antibody - Additional Information

Gene ID 3667

Other Names

IRS1; Insulin receptor substrate 1; IRS-1

Dilution

WB~~Western Blot: 1/500 - 1/2000.
Immunohistochemistry: 1/100 - 1/300.
Immunofluorescence: 1/200 - 1/1000.
ELISA: 1/20000. Not yet tested in other applications.

Format

Liquid in PBS containing 50% glycerol, 0.5% BSA and 0.02% sodium azide.

Storage Conditions

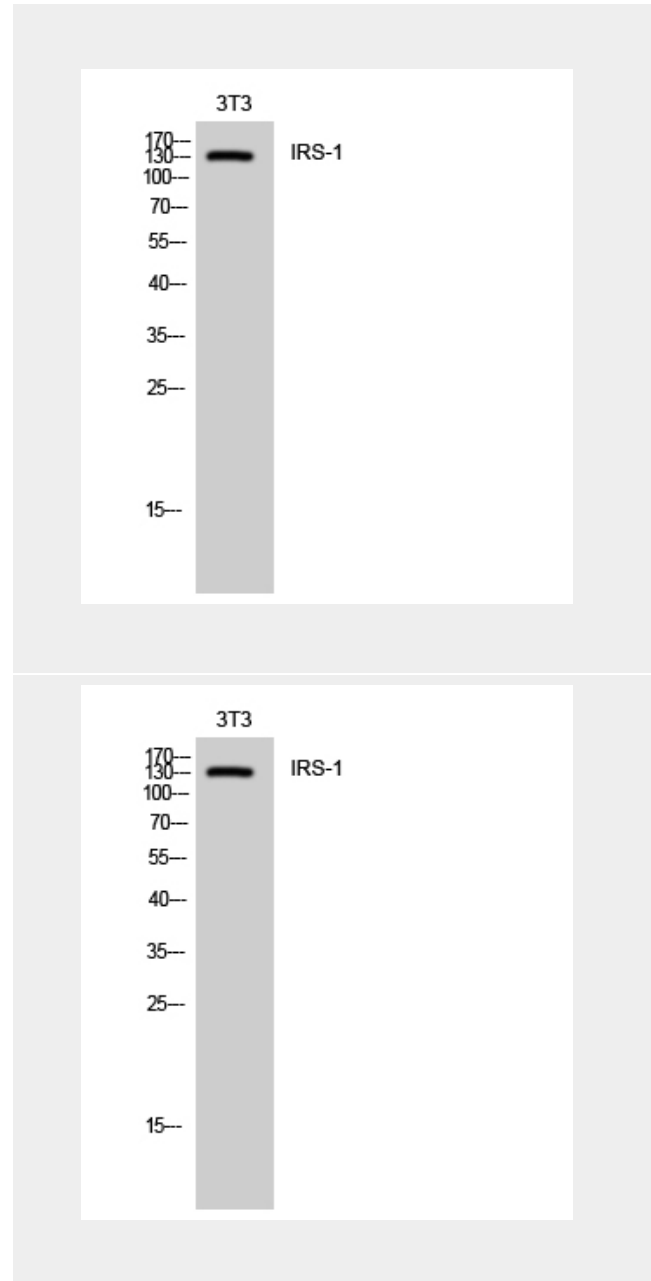
-20°C

IRS-1 Polyclonal Antibody - Protein Information

Name IRS1

Function

May mediate the control of various cellular processes by insulin. When phosphorylated by the insulin receptor binds specifically to various cellular proteins containing SH2 domains such as phosphatidylinositol 3-kinase p85 subunit or GRB2. Activates phosphatidylinositol 3-kinase when bound to the regulatory p85 subunit (By similarity).



IRS-1 Polyclonal Antibody - Background

May mediate the control of various cellular processes by insulin. When phosphorylated by the insulin receptor binds specifically to various cellular proteins containing SH2 domains such as phosphatidylinositol 3-kinase p85 subunit or GRB2. Activates

phosphatidylinositol 3-kinase when bound to the regulatory p85 subunit (By similarity).

IRS-1 Polyclonal Antibody - Protocols

Provided below are standard protocols that you may find useful for product applications.

- [Western Blot](#)
- [Blocking Peptides](#)
- [Dot Blot](#)
- [Immunohistochemistry](#)
- [Immunofluorescence](#)
- [Immunoprecipitation](#)
- [Flow Cytometry](#)
- [Cell Culture](#)