

hnRNP A1 Polyclonal Antibody
 Catalog # AP70375

Specification

hnRNP A1 Polyclonal Antibody - Product Information

Application **WB**
 Primary Accession [P09651](#)
 Reactivity **Human, Mouse, Rat**
 Host **Rabbit**
 Clonality **Polyclonal**

hnRNP A1 Polyclonal Antibody - Additional Information

Gene ID 3178

Other Names

HNRNPA1; HNRPA1; Heterogeneous nuclear ribonucleoprotein A1; hnRNP A1; Helix-destabilizing protein; Single-strand RNA-binding protein; hnRNP core protein A1

Dilution

WB~~Western Blot: 1/500 - 1/2000.
 Immunohistochemistry: 1/100 - 1/300.
 Immunofluorescence: 1/200 - 1/1000.
 ELISA: 1/20000. Not yet tested in other applications.

Format

Liquid in PBS containing 50% glycerol, 0.5% BSA and 0.02% sodium azide.

Storage Conditions

-20°C

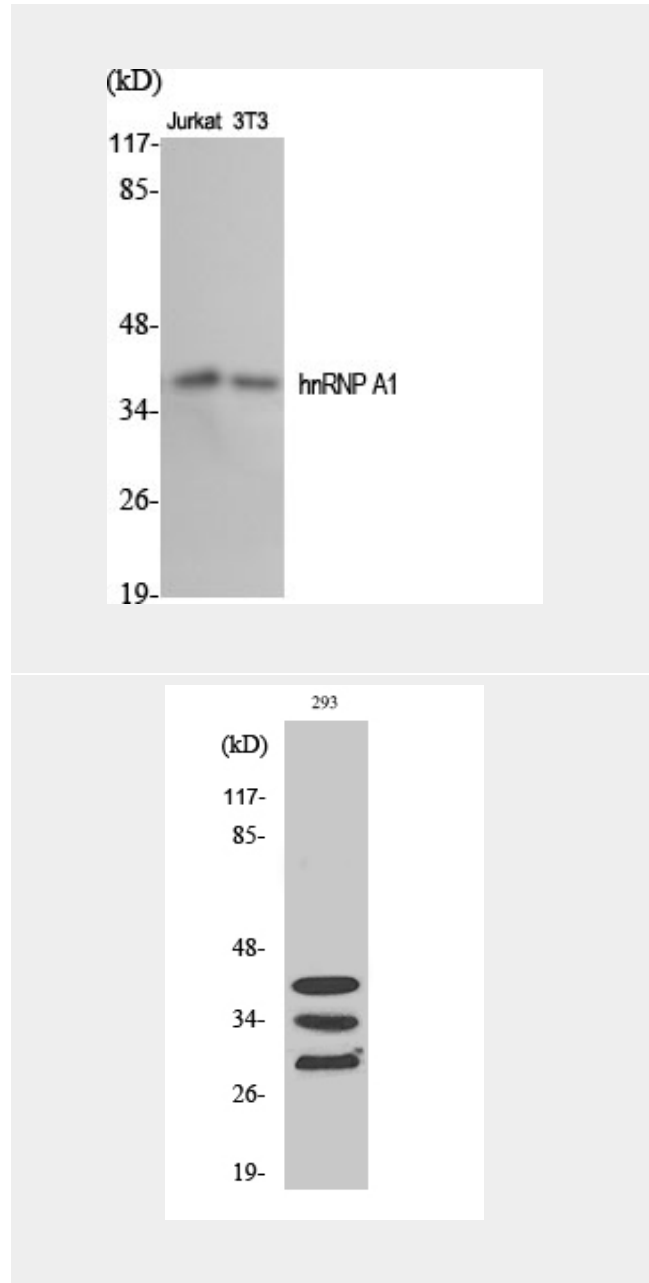
hnRNP A1 Polyclonal Antibody - Protein Information

Name HNRNPA1

Synonyms HNRPA1

Function

Involved in the packaging of pre-mRNA into hnRNP particles, transport of poly(A) mRNA from the nucleus to the cytoplasm and may modulate splice site selection (PubMed:<a



hnRNP A1 Polyclonal Antibody - Background

Involved in the packaging of pre-mRNA into hnRNP particles, transport of poly(A) mRNA from the nucleus to the cytoplasm and may modulate splice site selection (PubMed:17371836). May bind to specific

href="http://www.uniprot.org/citations/17371836" target="_blank">17371836). May bind to specific miRNA hairpins (PubMed:28431233). Binds to the IRES and thereby inhibits the translation of the apoptosis protease activating factor APAF1 (PubMed:31498791).

miRNA hairpins (PubMed:28431233).

Cellular Location

Nucleus. Cytoplasm Note=Localized in cytoplasmic mRNP granules containing untranslated mRNAs. Shuttles continuously between the nucleus and the cytoplasm along with mRNA. Component of ribonucleosomes (PubMed:17289661)

hnRNP A1 Polyclonal Antibody - Protocols

Provided below are standard protocols that you may find useful for product applications.

- [Western Blot](#)
- [Blocking Peptides](#)
- [Dot Blot](#)
- [Immunohistochemistry](#)
- [Immunofluorescence](#)
- [Immunoprecipitation](#)
- [Flow Cytometry](#)
- [Cell Culture](#)