

GCP5 Polyclonal Antibody

Catalog # AP70064

Specification

GCP5 Polyclonal Antibody - Product Information

Application	WB
Primary Accession	Q96RT8
Reactivity	Human, Mouse, Rat
Host	Rabbit
Clonality	Polyclonal

GCP5 Polyclonal Antibody - Additional Information

Gene ID 114791

Other Names

TUBGCP5; GCP5; KIAA1899; Gamma-tubulin complex component 5; GCP-5

Dilution

WB~Western Blot: 1/500 - 1/2000.
Immunohistochemistry: 1/100 - 1/300.
ELISA: 1/20000. Not yet tested in other applications.

Format

Liquid in PBS containing 50% glycerol, 0.5% BSA and 0.02% sodium azide.

Storage Conditions

-20°C

GCP5 Polyclonal Antibody - Protein Information

Name TUBGCP5

Synonyms GCP5, KIAA1899

Function

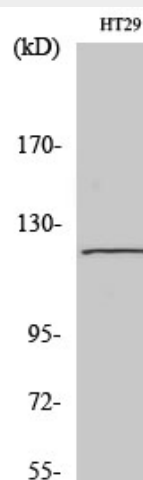
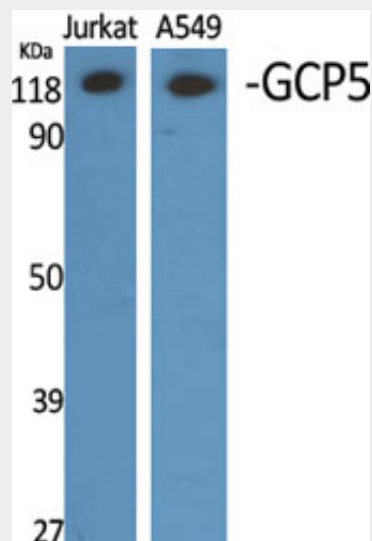
Gamma-tubulin complex is necessary for microtubule nucleation at the centrosome.

Cellular Location

Cytoplasm, cytoskeleton, microtubule organizing center, centrosome

Tissue Location

Widely expressed, with highest levels in

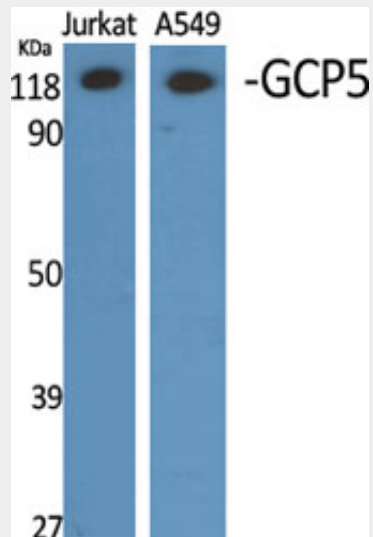
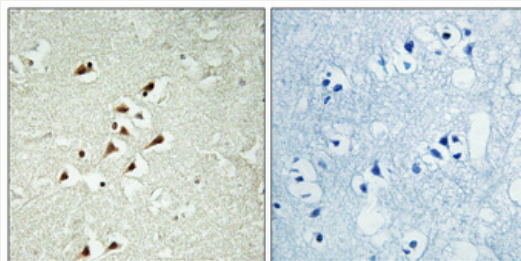
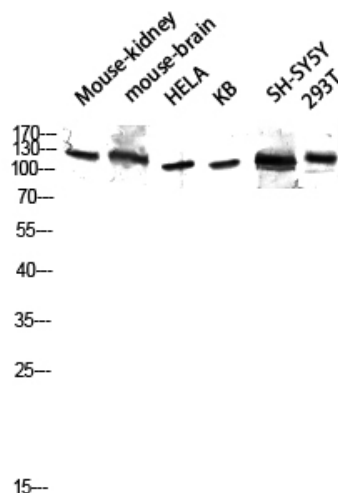


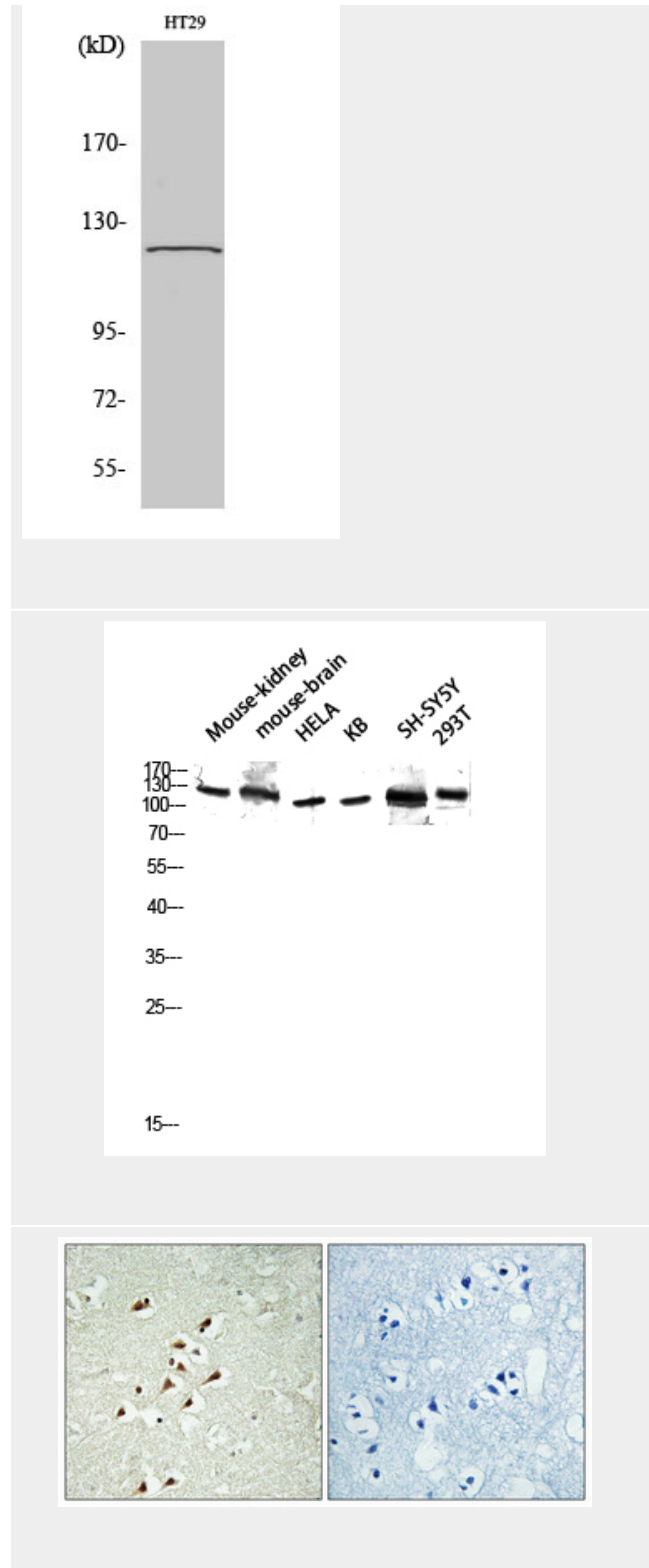
heart and skeletal muscle and moderate levels in brain

GCP5 Polyclonal Antibody - Protocols

Provided below are standard protocols that you may find useful for product applications.

- [Western Blot](#)
- [Blocking Peptides](#)
- [Dot Blot](#)
- [Immunohistochemistry](#)
- [Immunofluorescence](#)
- [Immunoprecipitation](#)
- [Flow Cytometry](#)
- [Cell Culture](#)





GCP5 Polyclonal Antibody - Background

Gamma-tubulin complex is necessary for microtubule nucleation at the centrosome.