

GCP4 Polyclonal Antibody

Catalog # AP70063

Specification

GCP4 Polyclonal Antibody - Product Information

Application	WB
Primary Accession	Q9UGJ1
Reactivity	Human, Mouse
Host	Rabbit
Clonality	Polyclonal

GCP4 Polyclonal Antibody - Additional Information

Gene ID 27229

Other Names

TUBGCP4; 76P; GCP4; Gamma-tubulin complex component 4; GCP-4; hGCP4; Gamma-ring complex protein 76 kDa; h76p; hGrip76

Dilution

WB~~Western Blot: 1/500 - 1/2000.
Immunohistochemistry: 1/100 - 1/300.
ELISA: 1/10000. Not yet tested in other applications.

Format

Liquid in PBS containing 50% glycerol, 0.5% BSA and 0.02% sodium azide.

Storage Conditions

-20°C

GCP4 Polyclonal Antibody - Protein Information

Name TUBGCP4

Synonyms 76P, GCP4

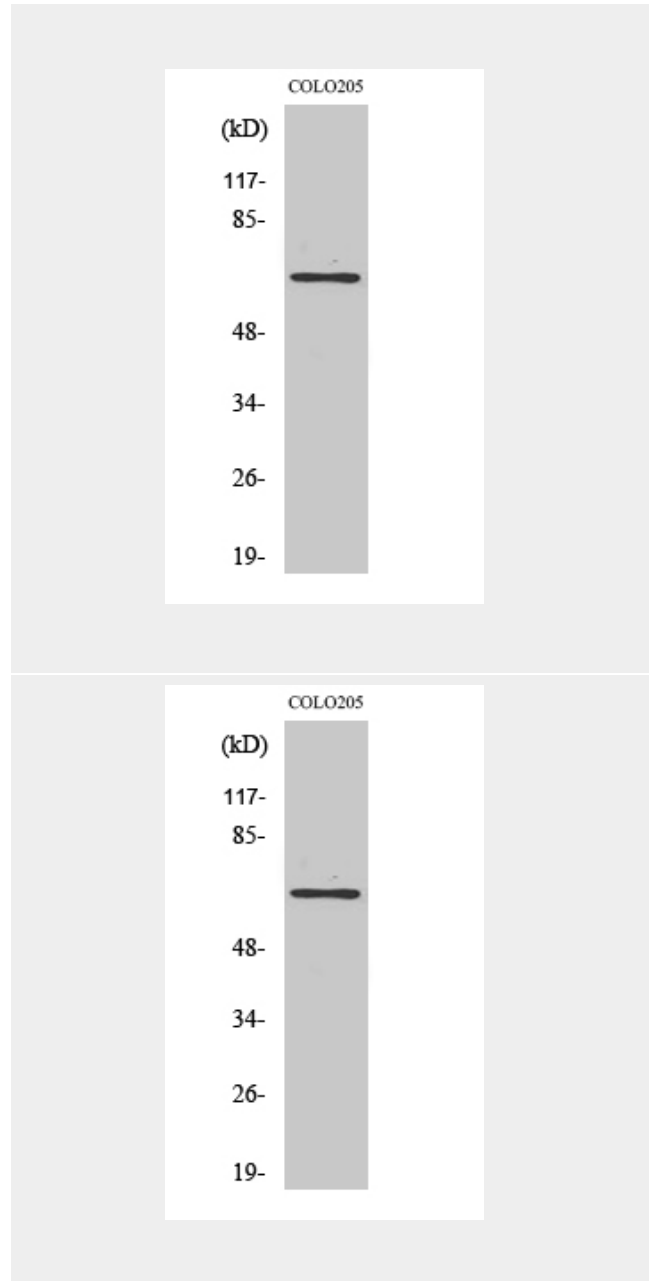
Function

Gamma-tubulin complex is necessary for microtubule nucleation at the centrosome.

Cellular Location

Cytoplasm, cytoskeleton, microtubule organizing center, centrosome

Tissue Location



GCP4 Polyclonal Antibody - Background

Gamma-tubulin complex is necessary for microtubule nucleation at the centrosome.

Ubiquitously expressed.

GCP4 Polyclonal Antibody - Protocols

Provided below are standard protocols that you may find useful for product applications.

- [Western Blot](#)
- [Blocking Peptides](#)
- [Dot Blot](#)
- [Immunohistochemistry](#)
- [Immunofluorescence](#)
- [Immunoprecipitation](#)
- [Flow Cytometry](#)
- [Cell Culture](#)