

## Ephrin-B1/2 Polyclonal Antibody

Catalog # AP69778

### Specification

#### Ephrin-B1/2 Polyclonal Antibody - Product Information

|                   |   |
|-------------------|---|
| Application       | <b>WB</b>                                       |
| Primary Accession | <a href="#">P98172</a> , <a href="#">P52799</a> |
| Reactivity        | <b>Human, Mouse, Rat</b>                        |
| Host              | <b>Rabbit</b>                                   |
| Clonality         | <b>Polyclonal</b>                               |

#### Ephrin-B1/2 Polyclonal Antibody - Additional Information

#### Other Names

EFNB1; EFL3; EPLG2; LERK2; Ephrin-B1; EFL-3; ELK ligand; ELK-L; EPH-related receptor tyrosine kinase ligand 2; LERK-2; EFNB2; EPLG5; HTKL; LERK5; Ephrin-B2; EPH-related receptor tyrosine kinase ligand 5; LERK-5; HTK ligand; HTK-L

#### Dilution

WB~~Western Blot: 1/500 - 1/2000.  
Immunohistochemistry: 1/100 - 1/300.  
ELISA: 1/40000. Not yet tested in other applications.

#### Format

Liquid in PBS containing 50% glycerol, 0.5% BSA and 0.02% sodium azide.

#### Storage Conditions

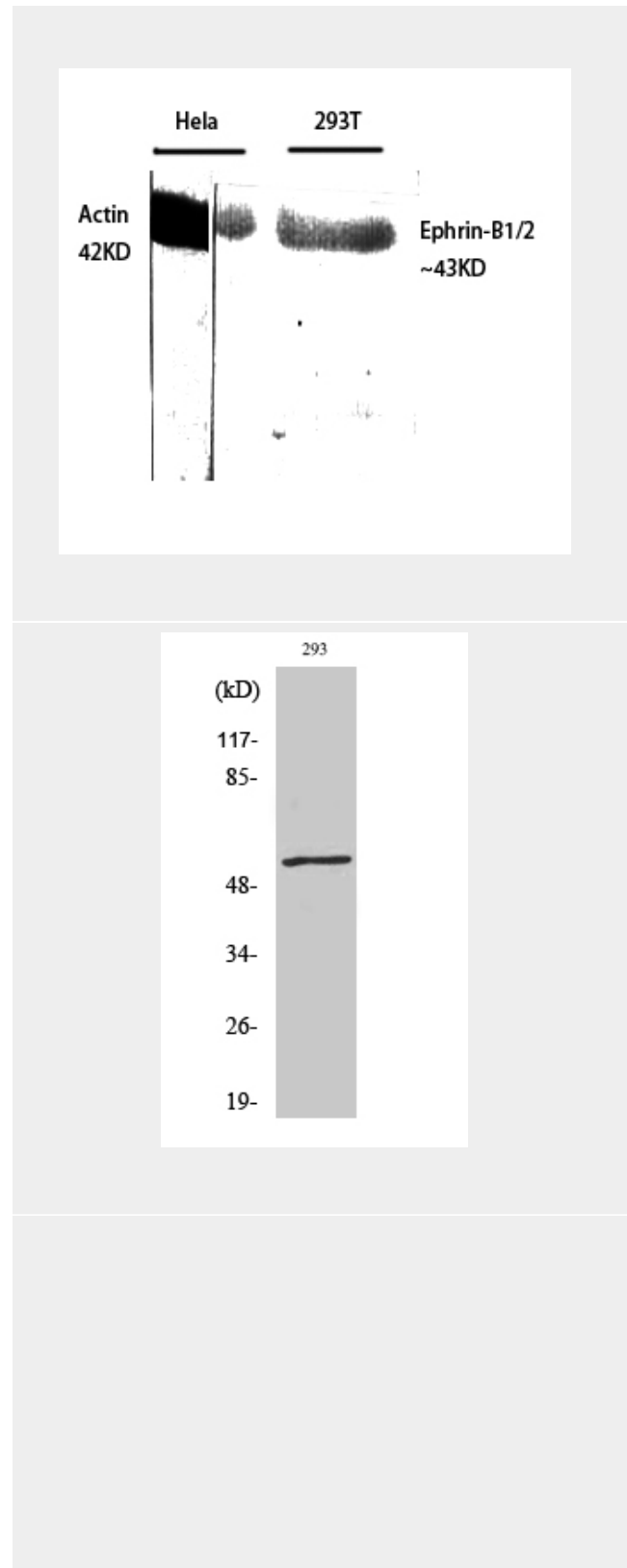
-20°C

#### Ephrin-B1/2 Polyclonal Antibody - Protein Information

### Ephrin-B1/2 Polyclonal Antibody - Protocols

Provided below are standard protocols that you may find useful for product applications.

- [Western Blot](#)
- [Blocking Peptides](#)



- [Dot Blot](#)
- [Immunohistochemistry](#)
- [Immunofluorescence](#)
- [Immunoprecipitation](#)
- [Flow Cytometry](#)
- [Cell Culture](#)

