

Coronin 1A Polyclonal Antibody
 Catalog # AP69244

Specification

Coronin 1A Polyclonal Antibody - Product Information

Application	WB
Primary Accession	P31146
Reactivity	Human, Mouse, Rat
Host	Rabbit
Clonality	Polyclonal

Coronin 1A Polyclonal Antibody - Additional Information

Gene ID 11151

Other Names

CORO1A; CORO1; Coronin-1A; Coronin-like protein A; Clipin-A; Coronin-like protein p57; Tryptophan aspartate-containing coat protein; TACO

Dilution

WB~~Western Blot: 1/500 - 1/2000.
 Immunohistochemistry: 1/100 - 1/300.
 ELISA: 1/40000. Not yet tested in other applications.

Format

Liquid in PBS containing 50% glycerol, 0.5% BSA and 0.02% sodium azide.

Storage Conditions

-20°C

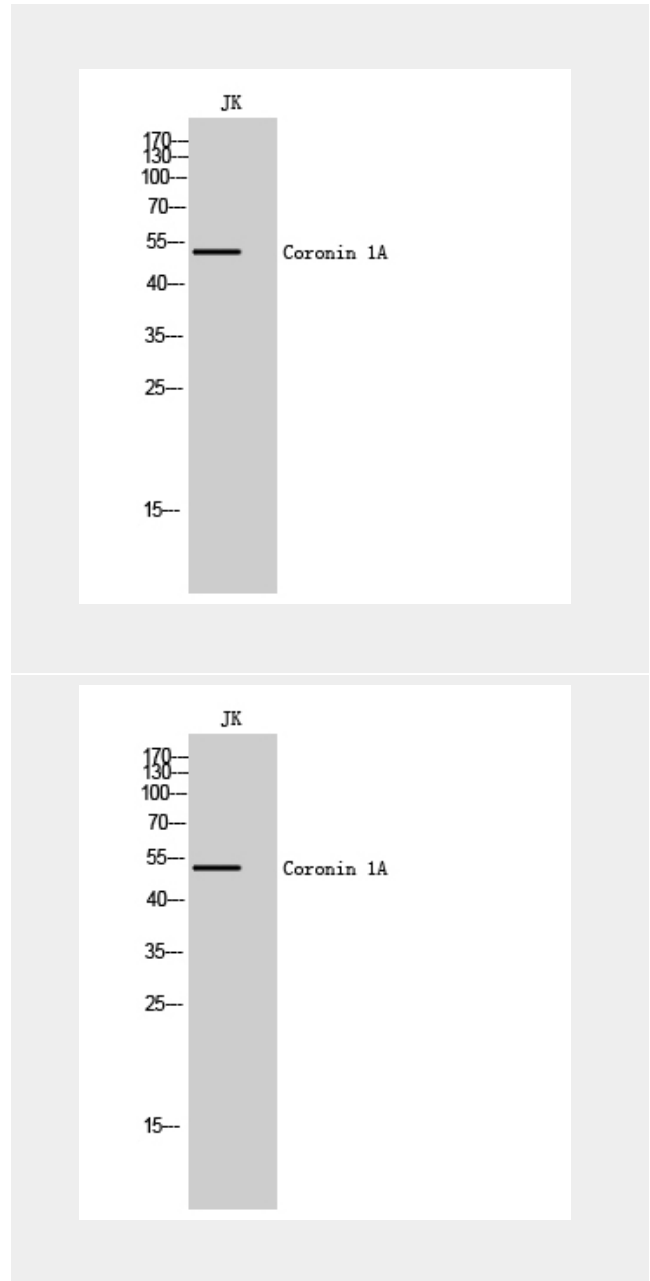
Coronin 1A Polyclonal Antibody - Protein Information

Name CORO1A

Synonyms CORO1

Function

May be a crucial component of the cytoskeleton of highly motile cells, functioning both in the invagination of large pieces of plasma membrane, as well as in forming protrusions of the plasma



Coronin 1A Polyclonal Antibody - Background

May be a crucial component of the cytoskeleton of highly motile cells, functioning both in the invagination of large pieces of plasma membrane, as well as in forming protrusions of the plasma membrane involved

membrane involved in cell locomotion. In mycobacteria-infected cells, its retention on the phagosomal membrane prevents fusion between phagosomes and lysosomes.

Cellular Location

Cytoplasm, cytoskeleton. Cytoplasm, cell cortex. Cytoplasmic vesicle, phagosome membrane. Note=In non-infected macrophages, associated with the cortical microtubule network. In mycobacteria-infected macrophages, becomes progressively relocalized and retained around the mycobacterial phagosomes. Retention on the phagosomal membrane is strictly dependent on mycobacterial viability and not due to impaired acidification (By similarity).

Tissue Location

Expressed in brain, thymus, spleen, bone marrow and lymph node. Low in lung and gut

in cell locomotion. In mycobacteria- infected cells, its retention on the phagosomal membrane prevents fusion between phagosomes and lysosomes.

Coronin 1A Polyclonal Antibody - Protocols

Provided below are standard protocols that you may find useful for product applications.

- [Western Blot](#)
- [Blocking Peptides](#)
- [Dot Blot](#)
- [Immunohistochemistry](#)
- [Immunofluorescence](#)
- [Immunoprecipitation](#)
- [Flow Cytometry](#)
- [Cell Culture](#)