

EPS8L3 Antibody (N-term)
Affinity Purified Rabbit Polyclonal Antibody (Pab)
Catalog # AP6911a

Specification

EPS8L3 Antibody (N-term) - Product Information

Application	WB, IHC-P, FC,E
Primary Accession	Q8TE67
Other Accession	Q91WL0
Reactivity	Human
Predicted	Mouse
Host	Rabbit
Clonality	Polyclonal
Isotype	Rabbit Ig
Calculated MW	66861
Antigen Region	1-30

EPS8L3 Antibody (N-term) - Additional Information

Gene ID 79574

Other Names

Epidermal growth factor receptor kinase substrate 8-like protein 3, EPS8-like protein 3, Epidermal growth factor receptor pathway substrate 8-related protein 3, EPS8-related protein 3, EPS8L3, EPS8R3

Target/Specificity

This EPS8L3 antibody is generated from rabbits immunized with a KLH conjugated synthetic peptide between 1-30 amino acids from the N-terminal region of human EPS8L3.

Dilution

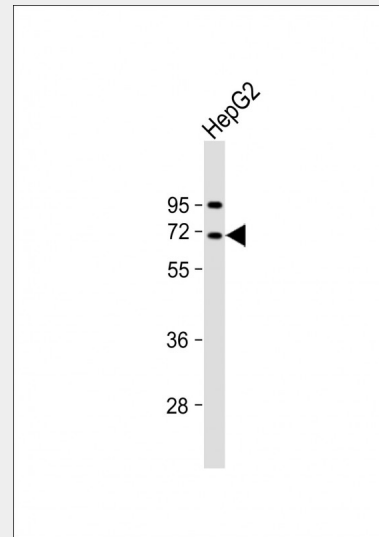
WB~~1:1000
IHC-P~~1:50~100
FC~~1:10~50

Format

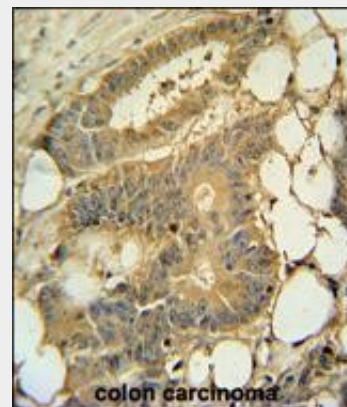
Purified polyclonal antibody supplied in PBS with 0.09% (W/V) sodium azide. This antibody is purified through a protein A column, followed by peptide affinity purification.

Storage

Maintain refrigerated at 2-8°C for up to 2 weeks. For long term storage store at -20°C



Anti-EPS8L3 Antibody (N-term) at 1:1000 dilution + HepG2 whole cell lysate Lysates/proteins at 20 µg per lane. Secondary Goat Anti-Rabbit IgG, (H+L), Peroxidase conjugated at 1/10000 dilution. Predicted band size : 67 kDa Blocking/Dilution buffer: 5% NFDM/TBST.



EPS8L3 Antibody (N-term) (Cat. #AP6911a) immunohistochemistry analysis in formalin fixed and paraffin embedded human colon carcinoma followed by peroxidase conjugation of the secondary antibody and DAB staining. This data demonstrates the use of the EPS8L3 Antibody (N-term) for immunohistochemistry. Clinical relevance has

in small aliquots to prevent freeze-thaw cycles.

Precautions

EPS8L3 Antibody (N-term) is for research use only and not for use in diagnostic or therapeutic procedures.

EPS8L3 Antibody (N-term) - Protein Information

Name EPS8L3

Synonyms EPS8R3

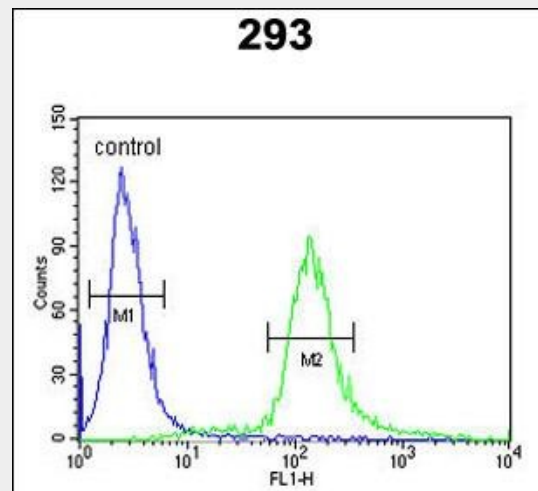
Cellular Location
Cytoplasm.

EPS8L3 Antibody (N-term) - Protocols

Provided below are standard protocols that you may find useful for product applications.

- [Western Blot](#)
- [Blocking Peptides](#)
- [Dot Blot](#)
- [Immunohistochemistry](#)
- [Immunofluorescence](#)
- [Immunoprecipitation](#)
- [Flow Cytometry](#)
- [Cell Culture](#)

not been evaluated.



EPS8L3 Antibody (N-term) (Cat. #AP6911a) flow cytometric analysis of 293 cells (right histogram) compared to a negative control cell (left histogram). FITC-conjugated goat-anti-rabbit secondary antibodies were used for the analysis.

EPS8L3 Antibody (N-term) - Background

EPS8L3 is related to epidermal growth factor receptor pathway substrate 8 (EPS8), a substrate for the epidermal growth factor receptor. The function of this protein is unknown.

EPS8L3 Antibody (N-term) - References

Tocchetti, A., et al., Genomics 81 (2), 234-244 (2003)