

Cdc42EP2 Polyclonal Antibody

Catalog # AP68991

Specification

Cdc42EP2 Polyclonal Antibody - Product Information

Application **WB**
Primary Accession [O14613](#)
Reactivity **Human, Mouse, Rat**
Host **Rabbit**
Clonality **Polyclonal**

Cdc42EP2 Polyclonal Antibody - Additional Information

Gene ID 10435

Other Names

CDC42EP2; BORG1; CEP2; Cdc42 effector protein 2; Binder of Rho GTPases 1

Dilution

WB~~Western Blot: 1/500 - 1/2000.
Immunohistochemistry: 1/100 - 1/300.
ELISA: 1/40000. Not yet tested in other applications.

Format

Liquid in PBS containing 50% glycerol, 0.5% BSA and 0.02% sodium azide.

Storage Conditions

-20°C

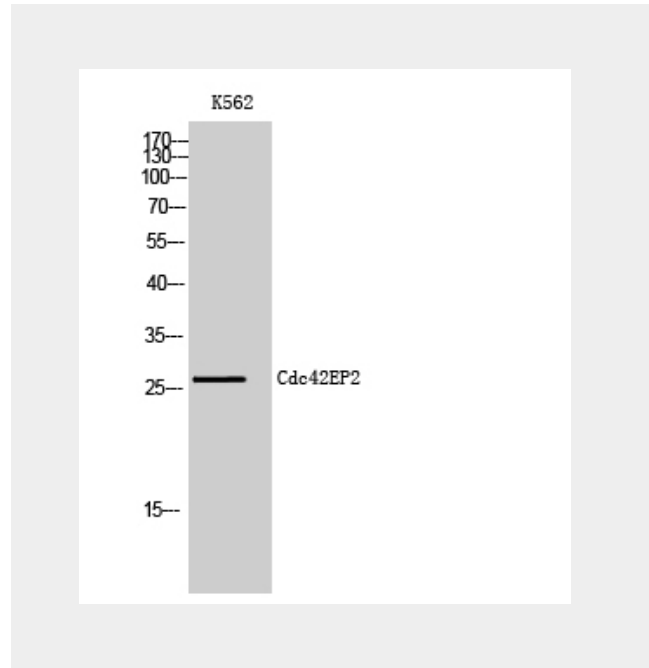
Cdc42EP2 Polyclonal Antibody - Protein Information

Name CDC42EP2

Synonyms BORG1, CEP2

Function

Probably involved in the organization of the actin cytoskeleton. May act downstream of CDC42 to induce actin filament assembly leading to cell shape changes. Induces pseudopodia formation in fibroblasts in a CDC42-dependent manner.



Cdc42EP2 Polyclonal Antibody - Background

Probably involved in the organization of the actin cytoskeleton. May act downstream of CDC42 to induce actin filament assembly leading to cell shape changes. Induces pseudopodia formation in fibroblasts in a CDC42-dependent manner.

Cellular Location

Endomembrane system; Peripheral membrane protein. Cytoplasm, cytoskeleton

Tissue Location

Highly expressed in the heart. Weakly expressed in the pancreas and liver.

Cdc42EP2 Polyclonal Antibody - Protocols

Provided below are standard protocols that you may find useful for product applications.

- [Western Blot](#)
- [Blocking Peptides](#)
- [Dot Blot](#)
- [Immunohistochemistry](#)
- [Immunofluorescence](#)
- [Immunoprecipitation](#)
- [Flow Cytometry](#)
- [Cell Culture](#)