

## Cathepsin G Polyclonal Antibody

Catalog # AP68866

### Specification

#### Cathepsin G Polyclonal Antibody - Product Information

Application **WB**  
Primary Accession [P08311](#)  
Reactivity **Human**  
Host **Rabbit**  
Clonality **Polyclonal**

#### Cathepsin G Polyclonal Antibody - Additional Information

Gene ID 1511

#### Other Names

CTSG; Cathepsin G; CG

#### Dilution

WB~~Western Blot: 1/500 - 1/2000. ELISA: 1/40000. Not yet tested in other applications.

#### Format

Liquid in PBS containing 50% glycerol, 0.5% BSA and 0.02% sodium azide.

#### Storage Conditions

-20°C

#### Cathepsin G Polyclonal Antibody - Protein Information

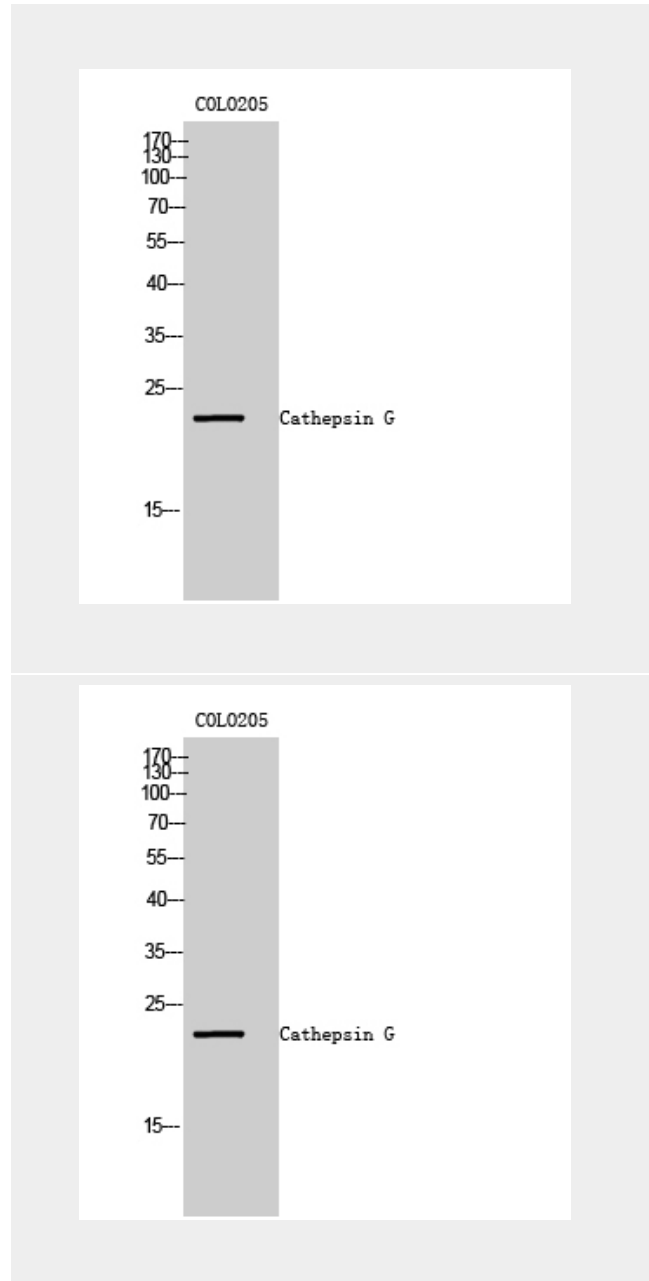
Name CTSG

#### Function

Serine protease with trypsin- and chymotrypsin-like specificity. Cleaves complement C3. Has antibacterial activity against the Gram-negative bacterium *P.aeruginosa*, antibacterial activity is inhibited by LPS from *P.aeruginosa*, Z-Gly-Leu-Phe-CH<sub>2</sub>Cl and phenylmethylsulfonyl fluoride.

#### Cellular Location

Cell surface.



#### Cathepsin G Polyclonal Antibody - Background

Serine protease with trypsin- and chymotrypsin-like specificity. Cleaves complement C3. Has antibacterial activity against the Gram-negative bacterium *P.aeruginosa*, antibacterial activity is inhibited

by LPS from P.aeruginosa, Z-Gly-Leu-Phe-CH<sub>2</sub>Cl and phenylmethylsulfonyl fluoride.

### **Cathepsin G Polyclonal Antibody - Protocols**

Provided below are standard protocols that you may find useful for product applications.

- [Western Blot](#)
- [Blocking Peptides](#)
- [Dot Blot](#)
- [Immunohistochemistry](#)
- [Immunofluorescence](#)
- [Immunoprecipitation](#)
- [Flow Cytometry](#)
- [Cell Culture](#)