

C/EBP γ Polyclonal Antibody
Catalog # AP68738

Specification

C/EBP γ Polyclonal Antibody - Product Information

Application **WB**
Primary Accession [P53567](#)
Reactivity **Human, Mouse, Rat**
Host **Rabbit**
Clonality **Polyclonal**

C/EBP γ Polyclonal Antibody - Additional Information

Gene ID 1054

Other Names

CEBPG; CCAAT/enhancer-binding protein gamma; C/EBP gamma

Dilution

WB~~Western Blot: 1/500 - 1/2000.
Immunohistochemistry: 1/100 - 1/300.
Immunofluorescence: 1/200 - 1/1000.
ELISA: 1/20000. Not yet tested in other applications.

Format

Liquid in PBS containing 50% glycerol, 0.5% BSA and 0.02% sodium azide.

Storage Conditions

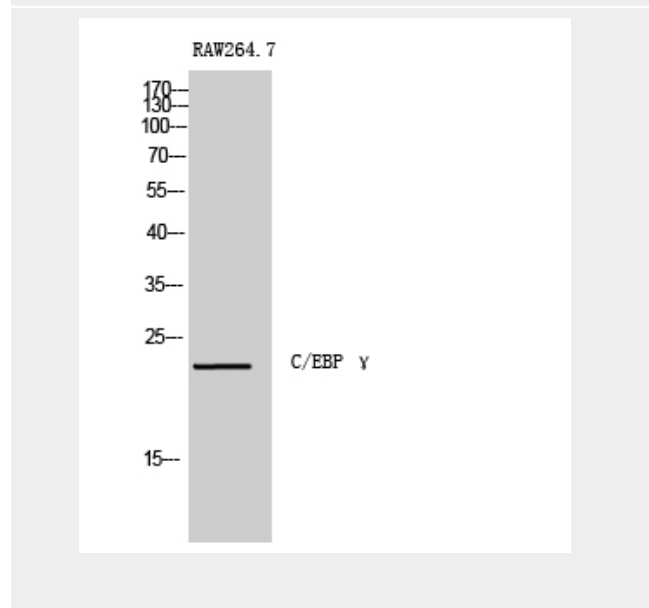
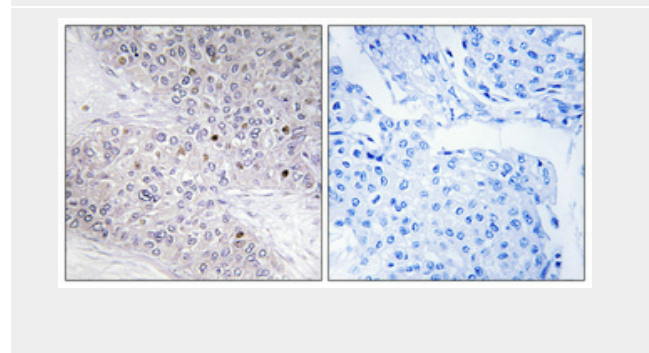
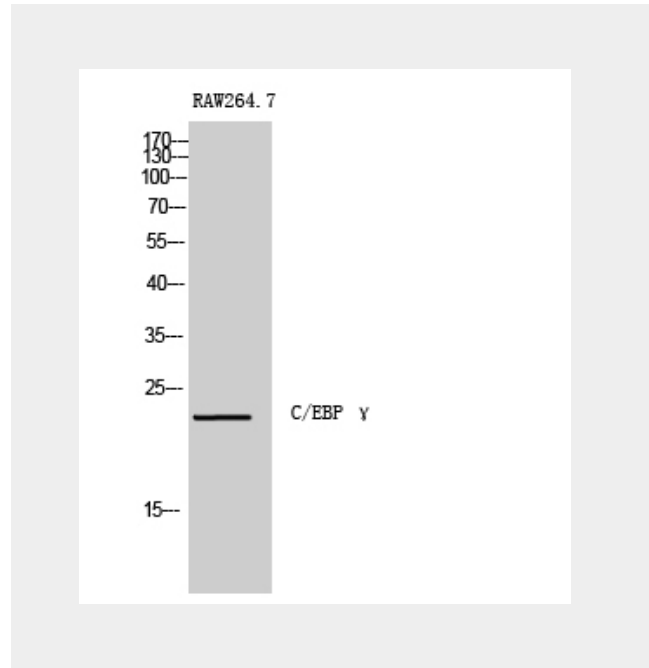
-20°C

C/EBP γ Polyclonal Antibody - Protein Information

Name CEBPG

Function

Transcription factor that binds to the promoter and the enhancer regions of target genes. Binds to the enhancer element PRE-I (positive regulatory element-I) of the IL-4 gene (PubMed:7665092). Binds to the promoter and the enhancer of the immunoglobulin heavy chain. Binds to



GPE1, a cis-acting element in the G-CSF gene promoter.

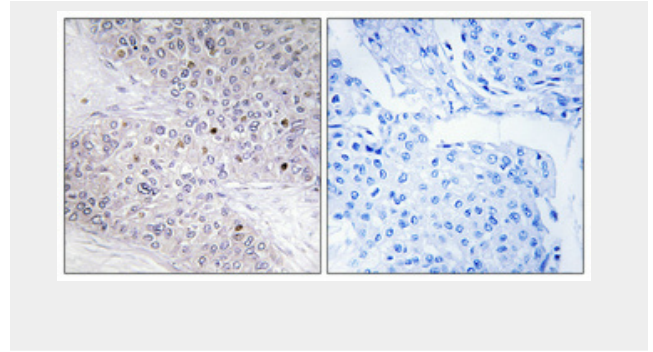
Cellular Location

Nucleus {ECO:0000250|UniProtKB:P53568}.

C/EBP γ Polyclonal Antibody - Protocols

Provided below are standard protocols that you may find useful for product applications.

- [Western Blot](#)
- [Blocking Peptides](#)
- [Dot Blot](#)
- [Immunohistochemistry](#)
- [Immunofluorescence](#)
- [Immunoprecipitation](#)
- [Flow Cytometry](#)
- [Cell Culture](#)

**C/EBP γ Polyclonal Antibody - Background**

Transcription factor that binds to the promoter and the enhancer regions of target genes. Binds to the enhancer element PRE-I (positive regulatory element-I) of the IL-4 gene (PubMed:7665092). Binds to the promoter and the enhancer of the immunoglobulin heavy chain. Binds to GPE1, a cis-acting element in the G-CSF gene promoter.