

**AR  $\alpha$ 2C Polyclonal Antibody**  
Catalog # AP68483**Specification****AR  $\alpha$ 2C Polyclonal Antibody - Product Information**

Application	<b>WB</b>
Primary Accession	<a href="#">P18825</a>
Reactivity	<b>Human, Mouse, Rat</b>
Host	<b>Rabbit</b>
Clonality	<b>Polyclonal</b>

**AR  $\alpha$ 2C Polyclonal Antibody - Additional Information****Gene ID 152****Other Names**

ADRA2C; ADRA2L2; ADRA2RL2; Alpha-2C adrenergic receptor; Alpha-2 adrenergic receptor subtype C4; Alpha-2C adrenoceptor; Alpha-2C adrenoceptor; Alpha-2CAR

**Dilution**

WB~~Western Blot: 1/500 - 1/2000.  
Immunohistochemistry: 1/100 - 1/300.  
Immunofluorescence: 1/200 - 1/1000.  
ELISA: 1/10000. Not yet tested in other applications.

**Format**

Liquid in PBS containing 50% glycerol, 0.5% BSA and 0.02% sodium azide.

**Storage Conditions**

-20°C

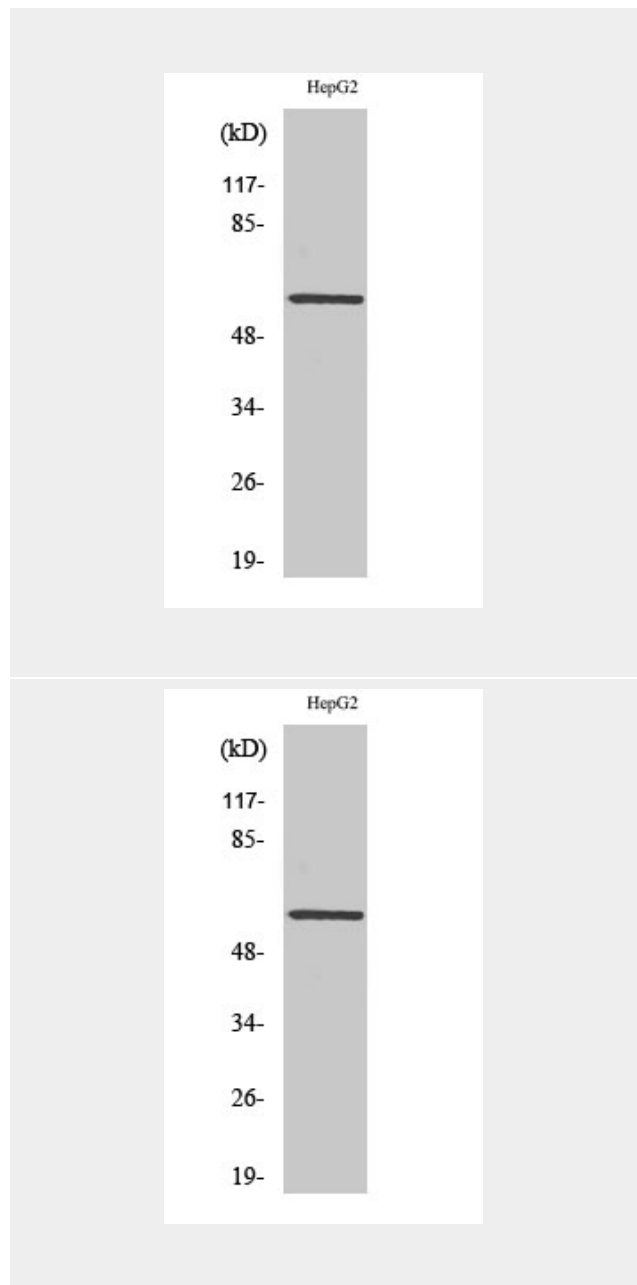
**AR  $\alpha$ 2C Polyclonal Antibody - Protein Information**

**Name** ADRA2C

**Synonyms** ADRA2L2, ADRA2RL2

**Function**

Alpha-2 adrenergic receptors mediate the catecholamine- induced inhibition of adenylate cyclase through the action of G proteins.

**AR  $\alpha$ 2C Polyclonal Antibody - Background**

Alpha-2 adrenergic receptors mediate the catecholamine- induced inhibition of adenylate cyclase through the action of G proteins.

**Cellular Location**

Cell membrane; Multi-pass membrane protein.

**AR  $\alpha$ 2C Polyclonal Antibody - Protocols**

Provided below are standard protocols that you may find useful for product applications.

- [Western Blot](#)
- [Blocking Peptides](#)
- [Dot Blot](#)
- [Immunohistochemistry](#)
- [Immunofluorescence](#)
- [Immunoprecipitation](#)
- [Flow Cytometry](#)
- [Cell Culture](#)