

## MEK Kinase-1 (phospho Thr1402) Polyclonal Antibody Catalog # AP67718

### Specification

#### MEK Kinase-1 (phospho Thr1402) Polyclonal Antibody - Product Information

Application **WB**  
Primary Accession [O13233](#)  
Reactivity **Human, Mouse, Rat**  
Host **Rabbit**  
Clonality **Polyclonal**

#### MEK Kinase-1 (phospho Thr1402) Polyclonal Antibody - Additional Information

Gene ID 4214

#### Other Names

MAP3K1; MAPKKK1; MEKK; MEKK1;  
Mitogen-activated protein kinase kinase kinase 1; MAPK/ERK kinase kinase 1; MEK kinase 1; MEKK 1

#### Dilution

WB~~Western Blot: 1/500 - 1/2000.  
Immunohistochemistry: 1/100 - 1/300.  
ELISA: 1/40000. Not yet tested in other applications.

#### Format

Liquid in PBS containing 50% glycerol, 0.5% BSA and 0.02% sodium azide.

#### Storage Conditions

-20°C

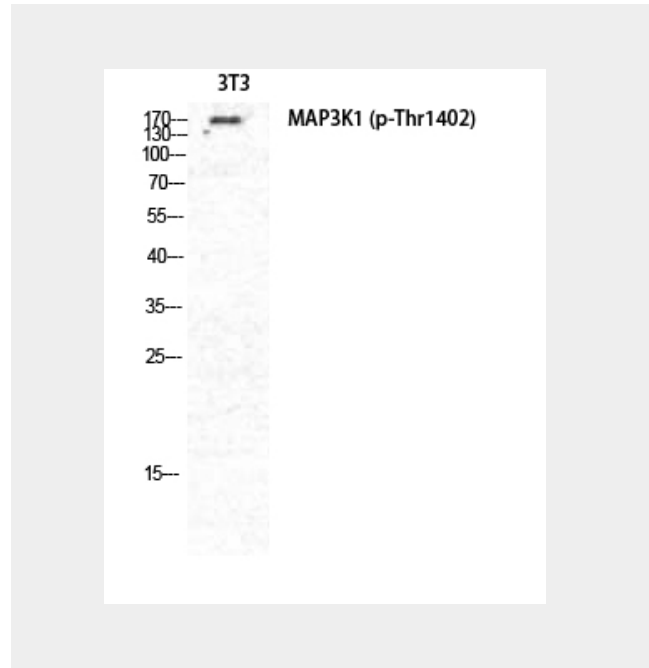
#### MEK Kinase-1 (phospho Thr1402) Polyclonal Antibody - Protein Information

Name MAP3K1

Synonyms MAPKKK1, MEKK, MEKK1

#### Function

Component of a protein kinase signal transduction cascade (PubMed:<a href="http://www.uniprot.org/citations/9808624" target="\_blank">9808624</a>). Activates the ERK and JNK kinase pathways by



#### MEK Kinase-1 (phospho Thr1402) Polyclonal Antibody - Background

Component of a protein kinase signal transduction cascade (PubMed:9808624). Activates the ERK and JNK kinase pathways by phosphorylation of MAP2K1 and MAP2K4 (PubMed:9808624). May phosphorylate the MAPK8/JNK1 kinase (PubMed:17761173). Activates CHUK and IKBKB, the central protein kinases of the NF- kappa-B pathway (PubMed:9808624).

phosphorylation of MAP2K1 and MAP2K4 (PubMed:<a href="http://www.uniprot.org/citations/9808624" target="\_blank">9808624</a>). May phosphorylate the MAPK8/JNK1 kinase (PubMed:<a href="http://www.uniprot.org/citations/17761173" target="\_blank">17761173</a>). Activates CHUK and IKBKB, the central protein kinases of the NF-kappa-B pathway (PubMed:<a href="http://www.uniprot.org/citations/9808624" target="\_blank">9808624</a>).

### **MEK Kinase-1 (phospho Thr1402) Polyclonal Antibody - Protocols**

Provided below are standard protocols that you may find useful for product applications.

- [Western Blot](#)
- [Blocking Peptides](#)
- [Dot Blot](#)
- [Immunohistochemistry](#)
- [Immunofluorescence](#)
- [Immunoprecipitation](#)
- [Flow Cytometry](#)
- [Cell Culture](#)