

Raf-B (phospho Ser446) Polyclonal Antibody

Catalog # AP67712

Specification

Raf-B (phospho Ser446) Polyclonal Antibody - Product Information

Application	WB
Primary Accession	P15056
Reactivity	Human, Mouse
Host	Rabbit
Clonality	Polyclonal

Raf-B (phospho Ser446) Polyclonal Antibody - Additional Information

Gene ID 673

Other Names

BRAF; BRAF1; RAFB1;
Serine/threonine-protein kinase B-raf;
Proto-oncogene B-Raf; p94; v-Raf murine
sarcoma viral oncogene homolog B1

Dilution

WB~~Western Blot: 1/500 - 1/2000.
Immunohistochemistry: 1/100 - 1/300.
ELISA: 1/10000. Not yet tested in other
applications.

Format

Liquid in PBS containing 50% glycerol, 0.5%
BSA and 0.02% sodium azide.

Storage Conditions

-20°C

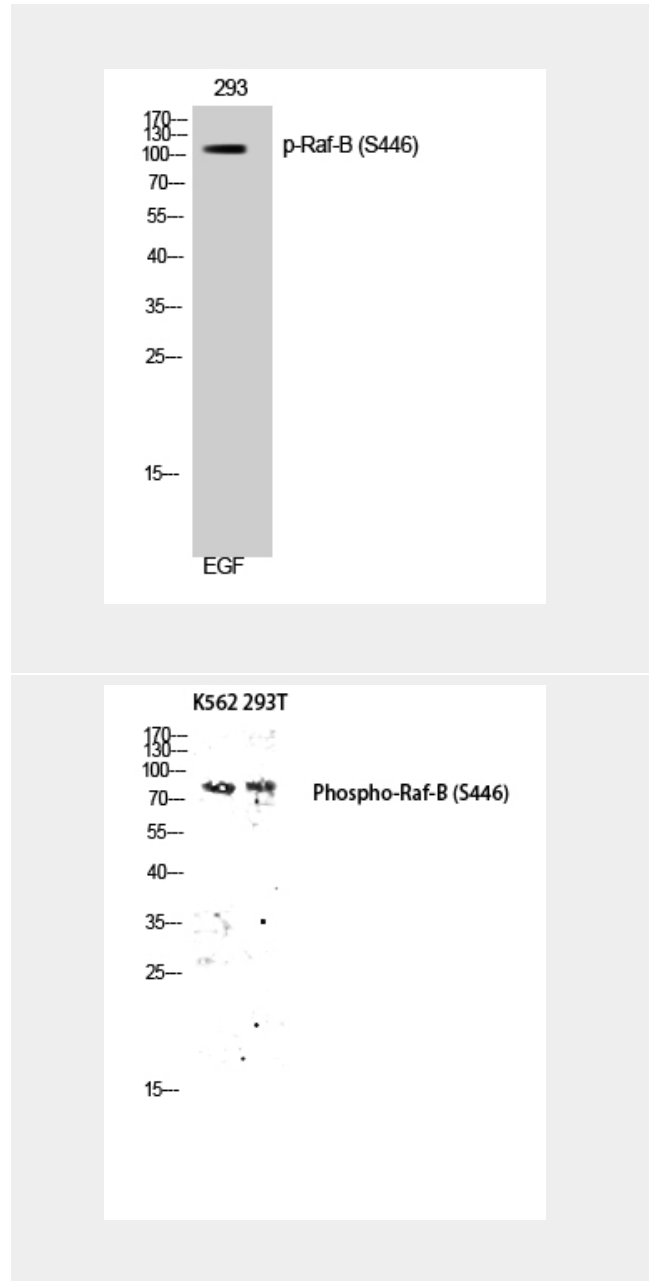
Raf-B (phospho Ser446) Polyclonal Antibody - Protein Information

Name BRAF ([HGNC:1097](#))

Synonyms BRAF1, RAFB1

Function

Protein kinase involved in the transduction of mitogenic signals from the cell membrane to the nucleus (Probable). Phosphorylates MAP2K1, and thereby activates the MAP kinase signal transduction pathway (PubMed:<a href="



Raf-B (phospho Ser446) Polyclonal Antibody - Background

Protein kinase involved in the transduction of mitogenic signals from the cell membrane to the nucleus. May play a role in the postsynaptic responses of hippocampal neuron. Phosphorylates MAP2K1, and thereby

[tp://www.uniprot.org/citations/21441910](http://www.uniprot.org/citations/21441910)
target="_blank">21441910,
PubMed:<a href="http://www.uniprot.org/ci
tations/29433126"
target="_blank">29433126). May play
a role in the postsynaptic responses of
hippocampal neurons (PubMed:<a href="ht
tp://www.uniprot.org/citations/1508179"
target="_blank">1508179).

contributes to the MAP kinase signal
transduction pathway.

Cellular Location

Nucleus. Cytoplasm. Cell membrane.
Note=Colocalizes with RGS14 and RAF1 in
both the cytoplasm and membranes.

Tissue Location

Brain and testis.

Raf-B (phospho Ser446) Polyclonal Antibody - Protocols

Provided below are standard protocols that you
may find useful for product applications.

- [Western Blot](#)
- [Blocking Peptides](#)
- [Dot Blot](#)
- [Immunohistochemistry](#)
- [Immunofluorescence](#)
- [Immunoprecipitation](#)
- [Flow Cytometry](#)
- [Cell Culture](#)