

EphB1/2 (phospho Tyr594/604) Polyclonal Antibody Catalog # AP67483

Specification

EphB1/2 (phospho Tyr594/604) Polyclonal Antibody - Product Information

Application	WB
Primary Accession	P54762 , P29323
Reactivity	Human, Mouse, Rat
Host	Rabbit
Clonality	Polyclonal

EphB1/2 (phospho Tyr594/604) Polyclonal Antibody - Additional Information

Other Names

EPHB1; ELK; EPHT2; HEK6; NET; Ephrin type-B receptor 1; ELK; EPH tyrosine kinase 2; EPH-like kinase 6; EK6; hEK6; Neuronally-expressed EPH-related tyrosine kinase; NET; Tyrosine-protein kinase receptor EPH-2; EPHB2; DRT; EPHT3; EPTH3; ERK;

Dilution

WB~~Western Blot: 1/500 - 1/2000.
Immunofluorescence: 1/200 - 1/1000.
ELISA: 1/5000. Not yet tested in other applications.

Format

Liquid in PBS containing 50% glycerol, 0.5% BSA and 0.02% sodium azide.

Storage Conditions

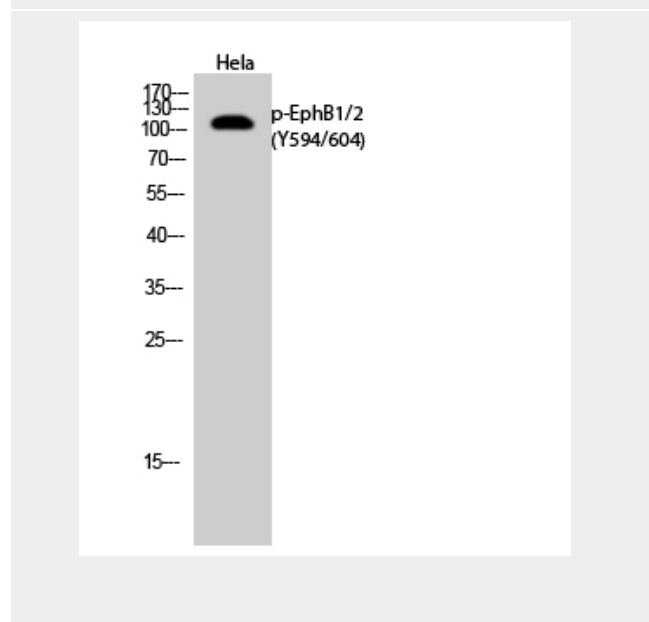
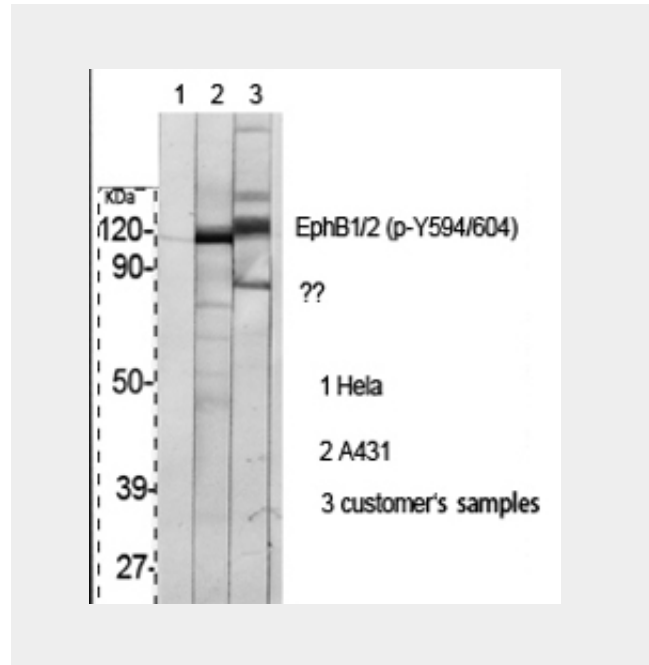
-20°C

EphB1/2 (phospho Tyr594/604) Polyclonal Antibody - Protein Information

EphB1/2 (phospho Tyr594/604) Polyclonal Antibody - Protocols

Provided below are standard protocols that you may find useful for product applications.

- [Western Blot](#)



- [Blocking Peptides](#)
- [Dot Blot](#)
- [Immunohistochemistry](#)
- [Immunofluorescence](#)
- [Immunoprecipitation](#)
- [Flow Cytometry](#)
- [Cell Culture](#)

