

JNK1/2/3 (phospho Thr183/Y185) Polyclonal Antibody

Catalog # AP67089

Specification

JNK1/2/3 (phospho Thr183/Y185) Polyclonal Antibody - Product Information

Application	IF
Primary Accession	P45983 , P45984 , P53779
Reactivity	Human, Mouse, Rat, Chicken
Host	Rabbit
Clonality	Polyclonal

JNK1/2/3 (phospho Thr183/Y185) Polyclonal Antibody - Additional Information

Other Names

MAPK8; JNK1; PRKM8; SAPK1; SAPK1C; Mitogen-activated protein kinase 8; MAP kinase 8; MAPK 8; JNK-46; Stress-activated protein kinase 1c; SAPK1c; Stress-activated protein kinase JNK1; c-Jun N-terminal kinase 1; MAPK9; JNK2; PRKM9; SAPK1A; Mi

Dilution

IF ~IF: 1:50-200 WB 1:500-2000, IHC 1:50-300 IHC 1:50-300

Format

Liquid in PBS containing 50% glycerol, 0.5% BSA and 0.02% sodium azide.

Storage Conditions

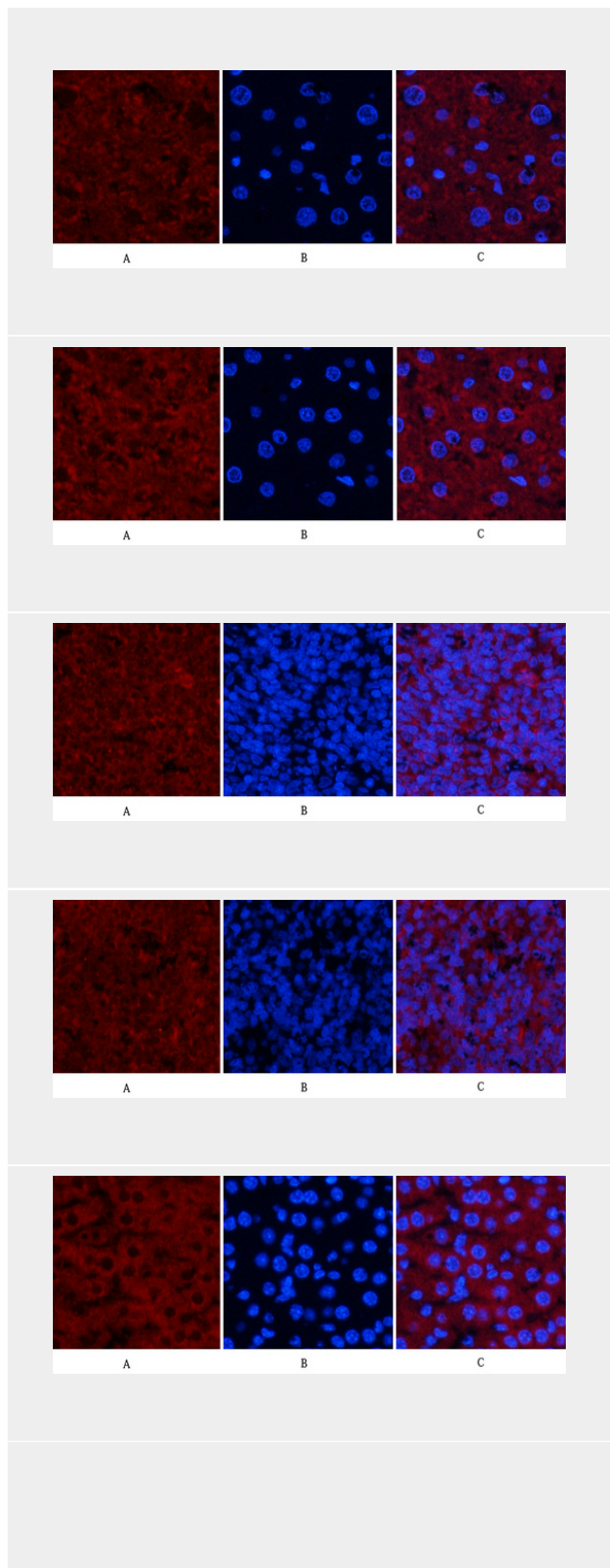
-20°C

JNK1/2/3 (phospho Thr183/Y185) Polyclonal Antibody - Protein Information

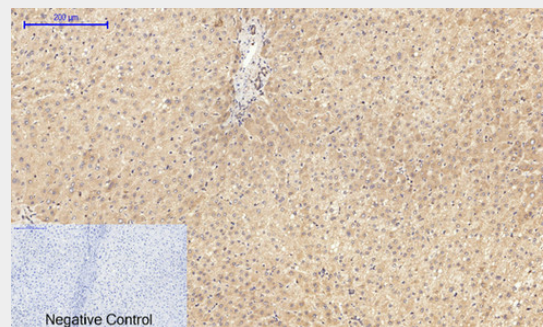
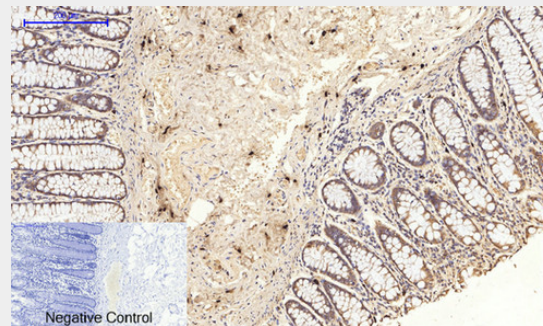
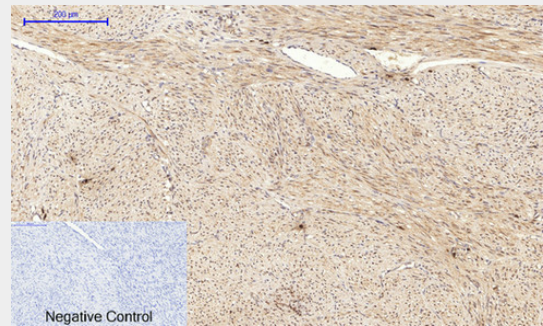
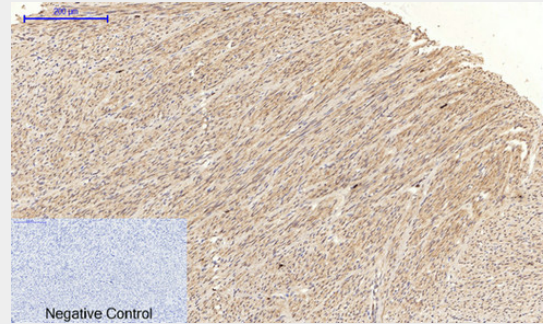
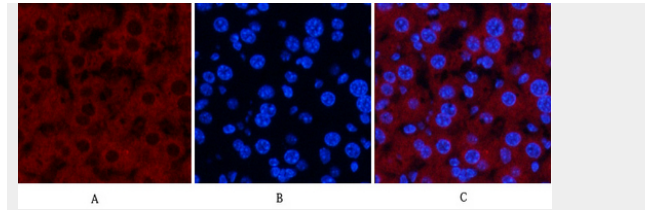
JNK1/2/3 (phospho Thr183/Y185) Polyclonal Antibody - Protocols

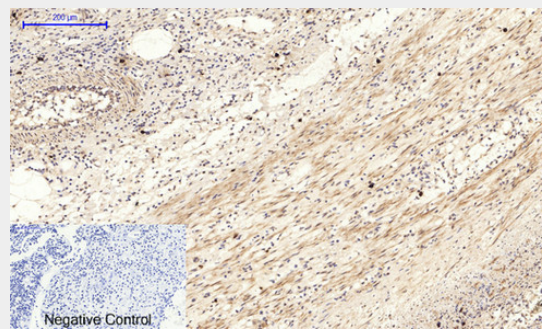
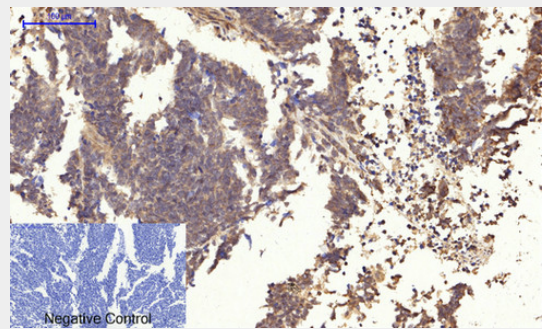
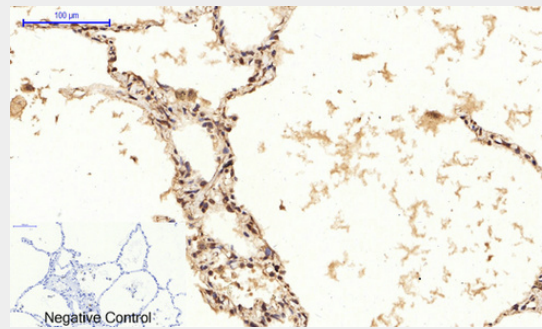
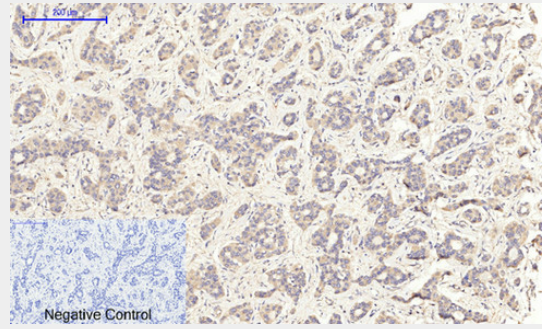
Provided below are standard protocols that you may find useful for product applications.

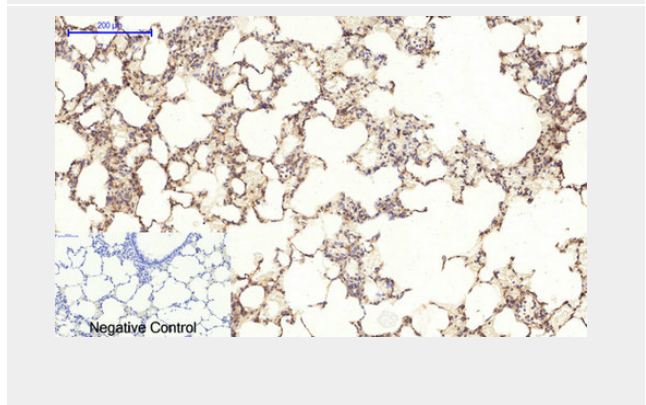
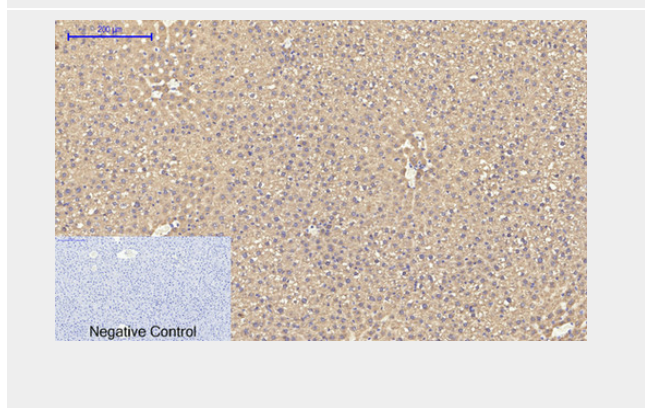
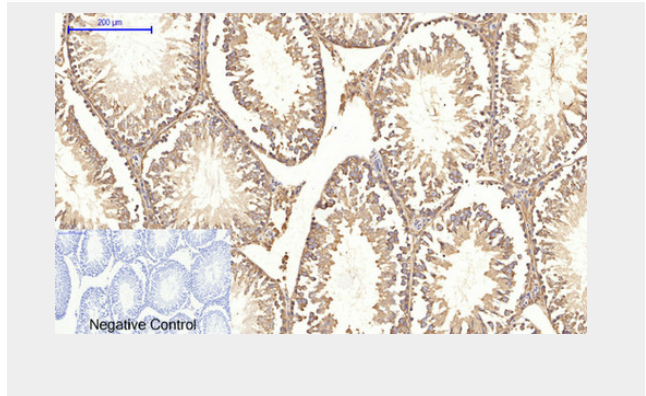
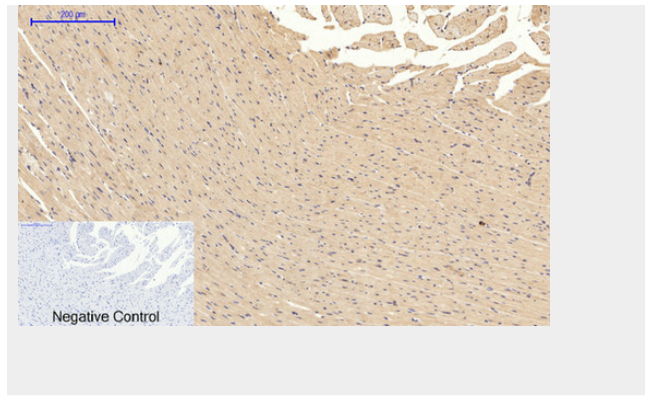
- [Western Blot](#)
- [Blocking Peptides](#)
- [Dot Blot](#)

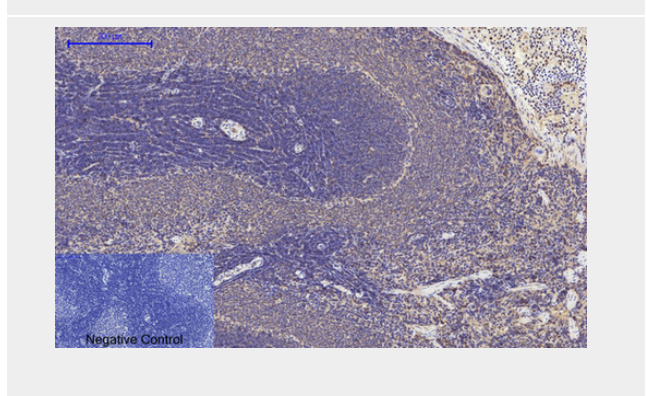
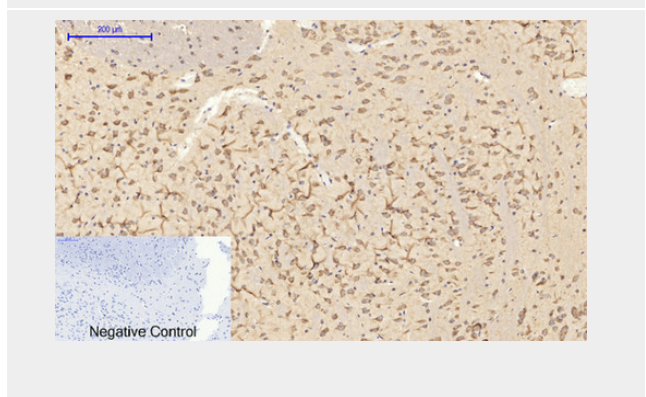
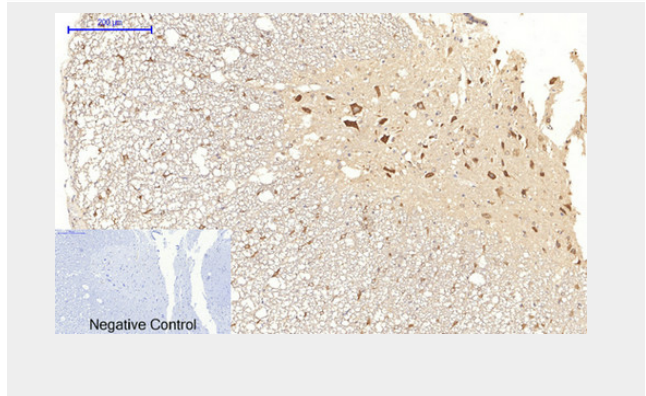
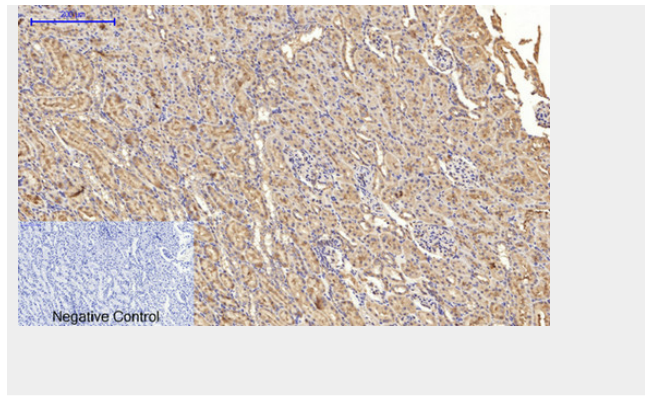


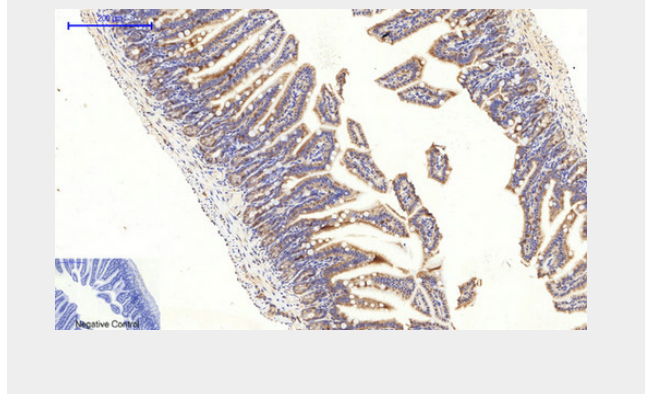
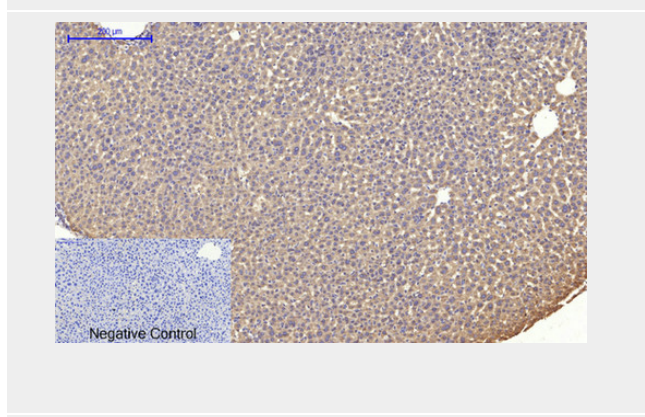
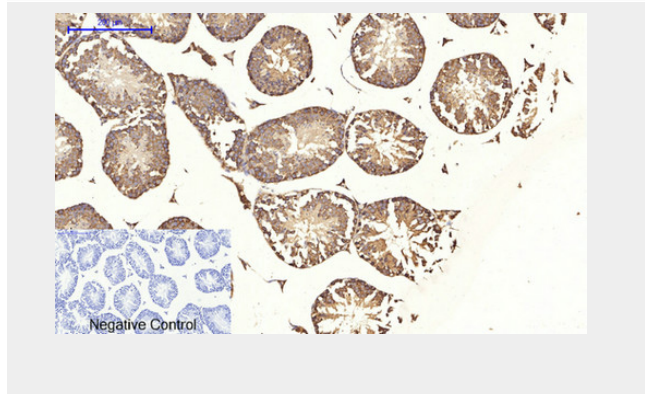
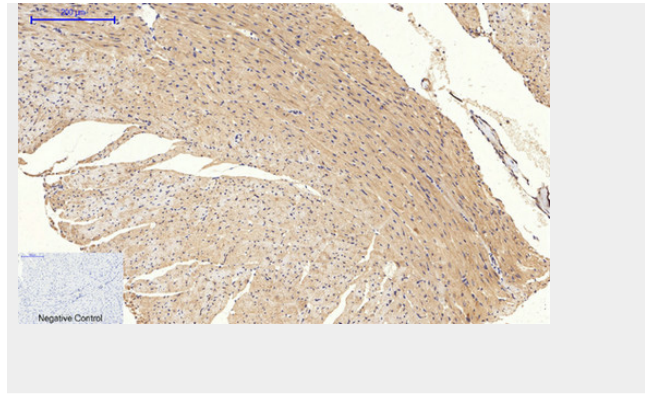
- [Immunohistochemistry](#)
- [Immunofluorescence](#)
- [Immunoprecipitation](#)
- [Flow Cytometry](#)
- [Cell Culture](#)

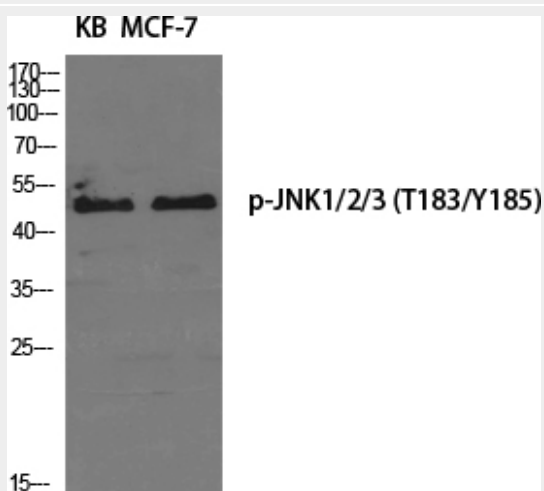
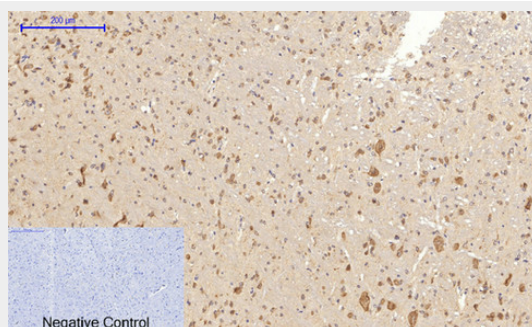
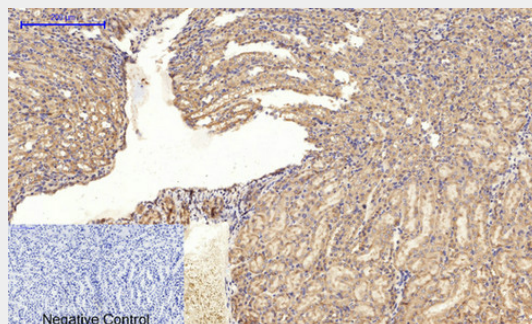
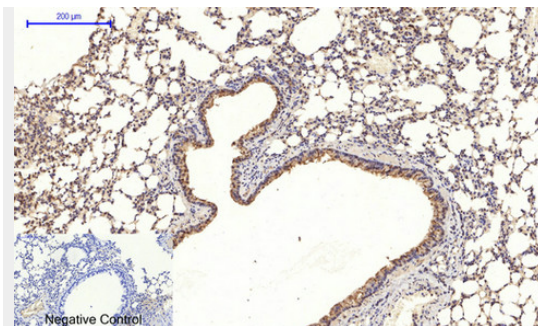


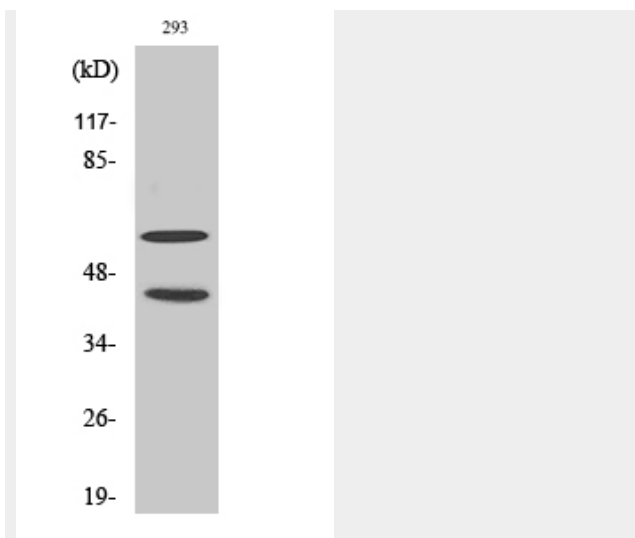






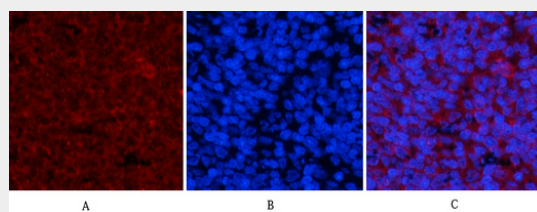
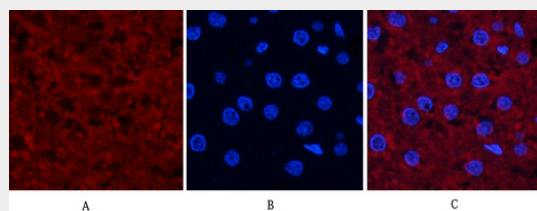
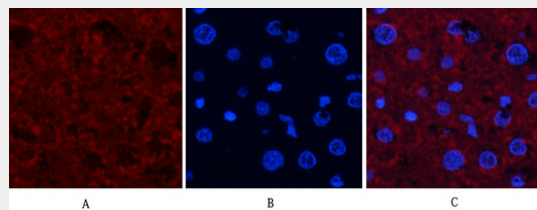


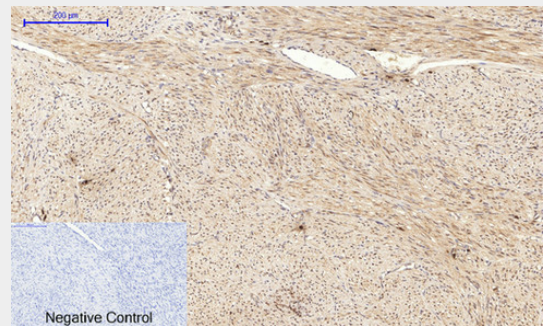
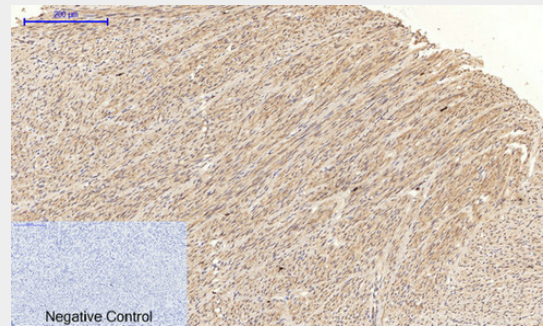
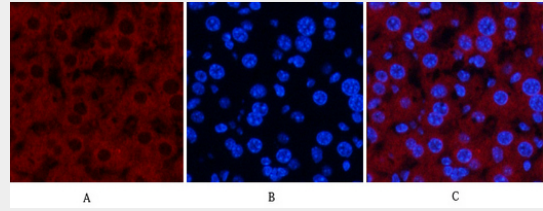
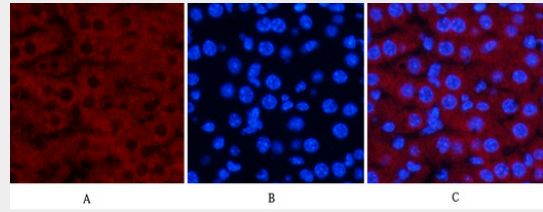
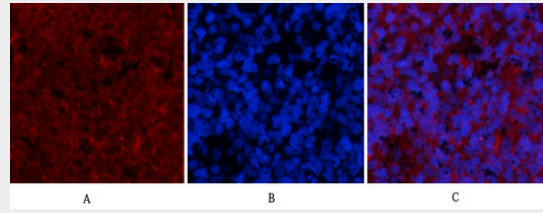


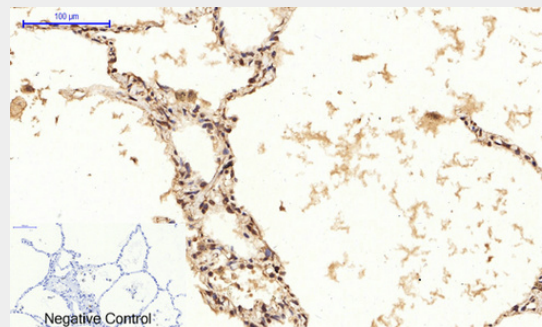
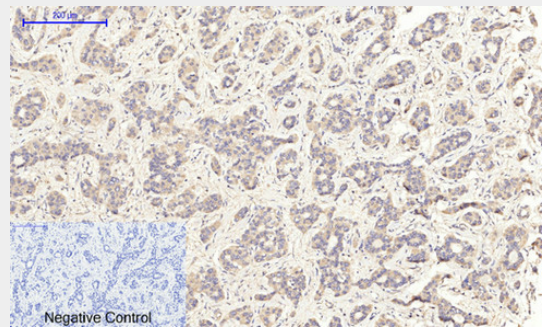
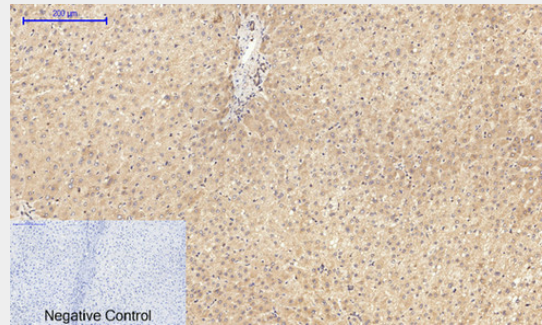
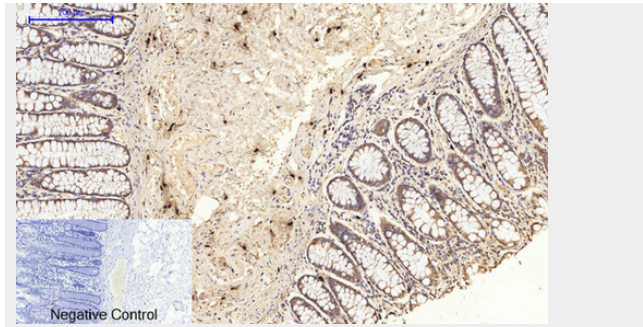


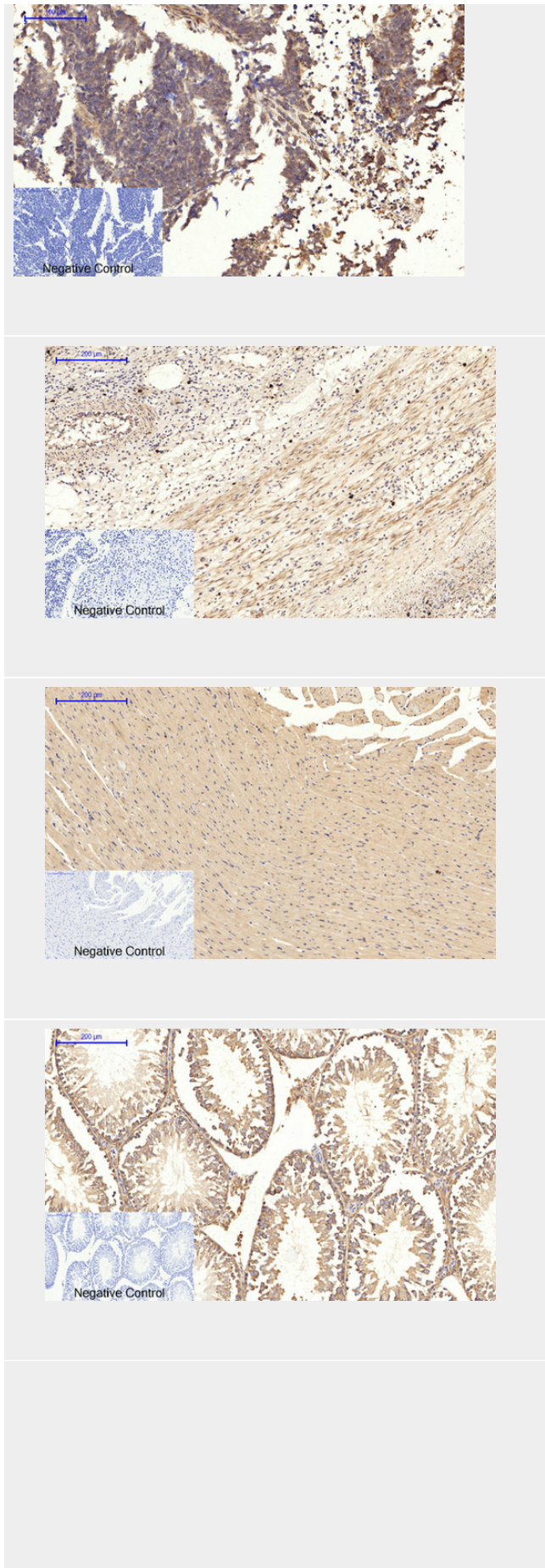
p-JNK1/2/3

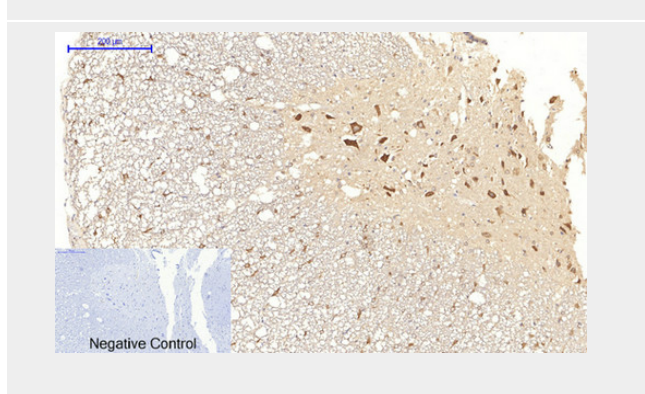
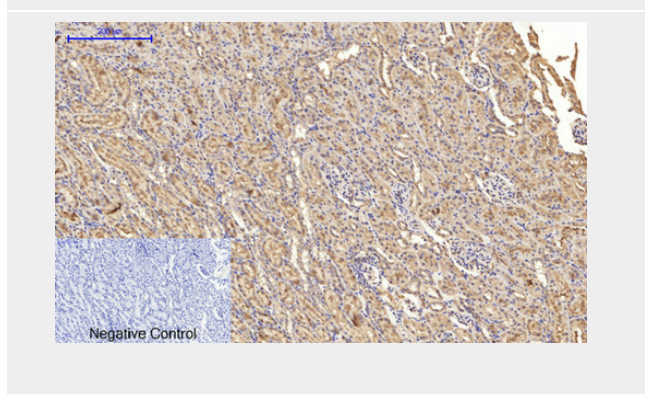
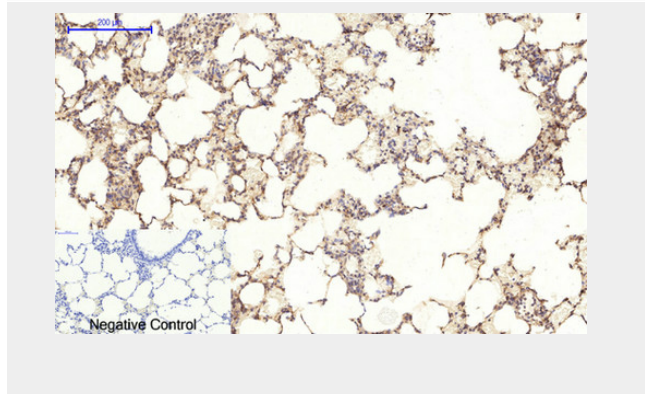
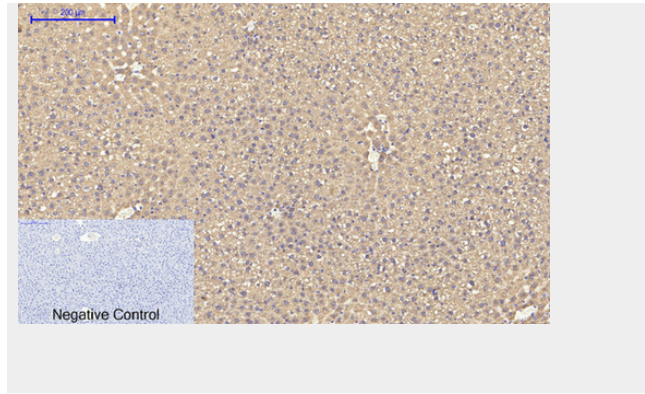
The First Affiliated Hospital of China Medical University
Dr. HouDianDong

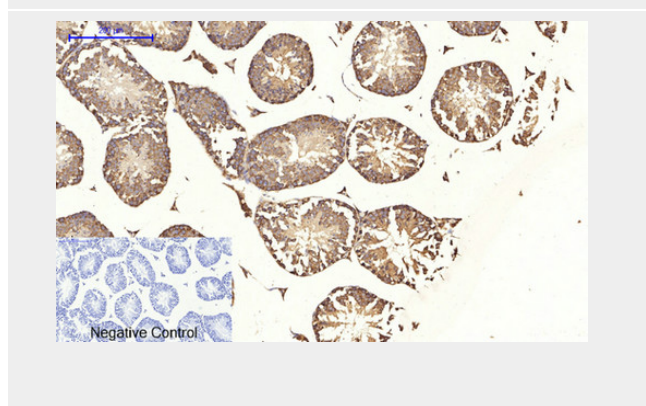
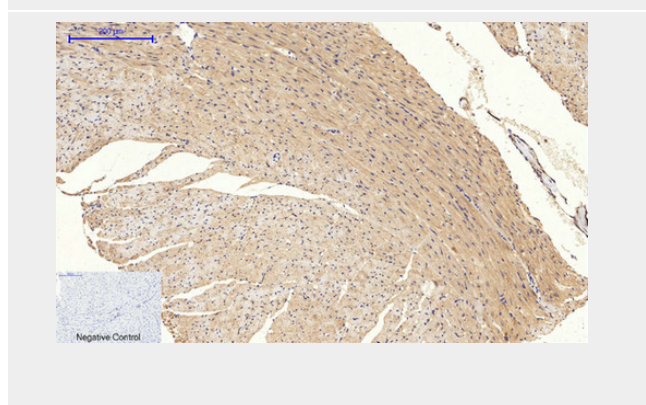
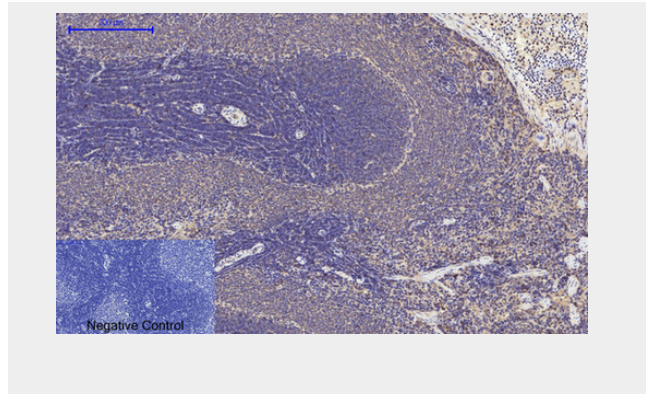
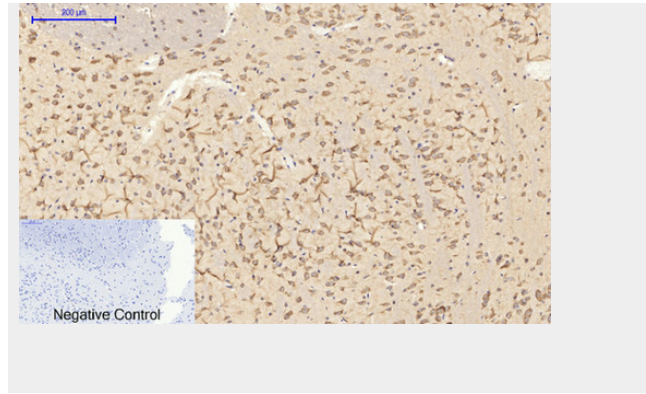


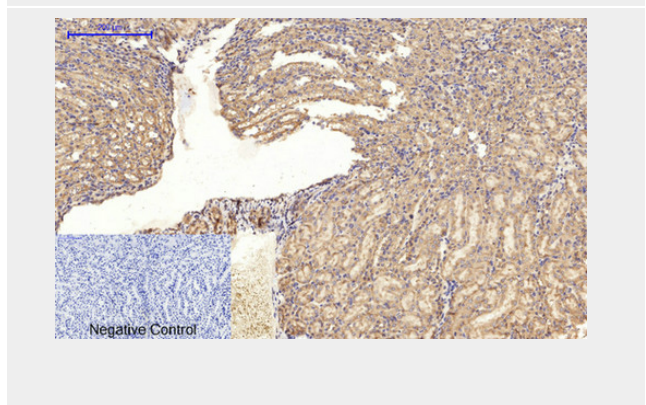
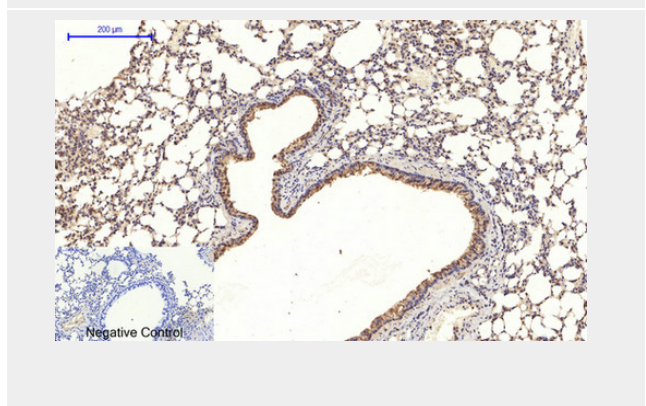
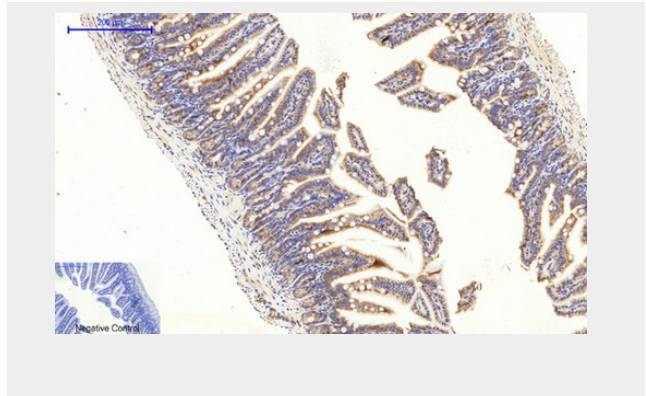
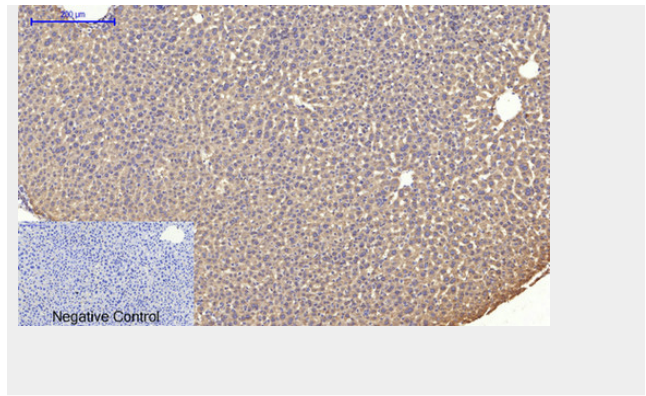


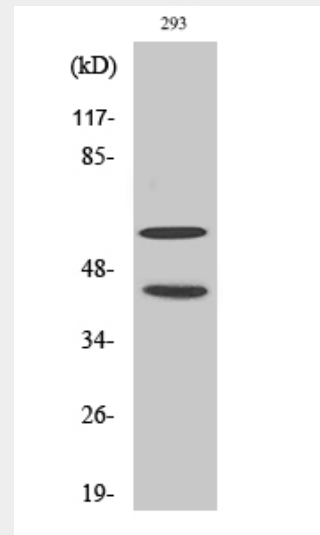
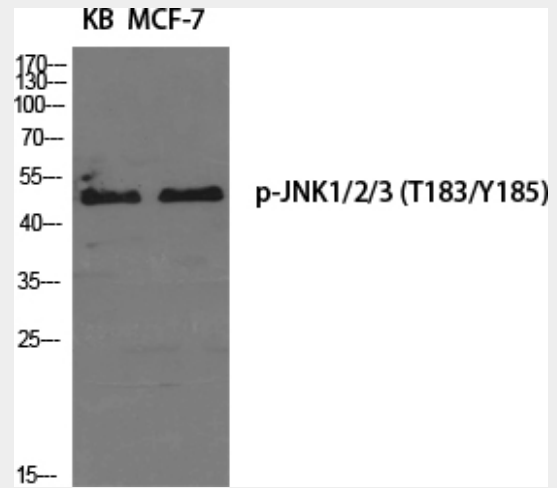
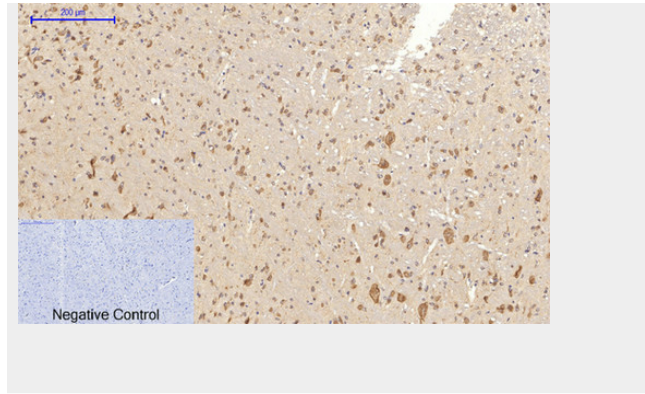


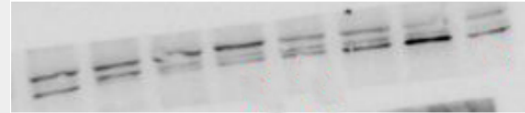












p-JNK1/2/3

The First Affiliated Hospital of China Medical University
Dr. HouDianDong