

Cyclin B1 (phospho Ser126) Polyclonal Antibody Catalog # AP67011

Specification

Cyclin B1 (phospho Ser126) Polyclonal Antibody - Product Information

Application **WB**
Primary Accession [P14635](#)
Reactivity **Human, Mouse,
Rat**
Host **Rabbit**
Clonality **Polyclonal**

Cyclin B1 (phospho Ser126) Polyclonal Antibody - Additional Information

Gene ID 891

Other Names

CCNB1; CCNB; G2/mitotic-specific cyclin-B1

Dilution

WB~~Western Blot: 1/500 - 1/2000.
Immunohistochemistry: 1/100 - 1/300.
ELISA: 1/5000. Not yet tested in other
applications.

Format

Liquid in PBS containing 50% glycerol, 0.5%
BSA and 0.02% sodium azide.

Storage Conditions

-20°C

Cyclin B1 (phospho Ser126) Polyclonal Antibody - Protein Information

Name CCNB1

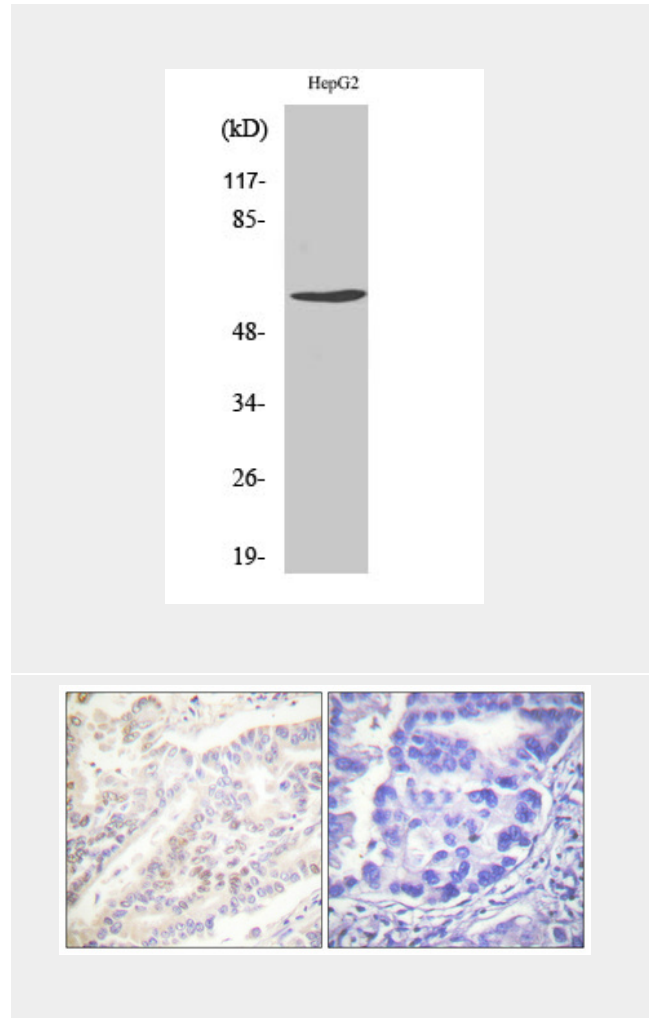
Synonyms CCNB

Function

Essential for the control of the cell cycle at
the G2/M (mitosis) transition.

Cellular Location

Cytoplasm. Nucleus. Cytoplasm,
cytoskeleton, microtubule organizing
center, centrosome



Cyclin B1 (phospho Ser126) Polyclonal Antibody - Background

Essential for the control of the cell cycle at
the G2/M (mitosis) transition.

Cyclin B1 (phospho Ser126) Polyclonal Antibody - Protocols

Provided below are standard protocols that you may find useful for product applications.

- [Western Blot](#)
- [Blocking Peptides](#)
- [Dot Blot](#)
- [Immunohistochemistry](#)
- [Immunofluorescence](#)
- [Immunoprecipitation](#)
- [Flow Cytometry](#)
- [Cell Culture](#)