

Cdc25A (phospho Ser75) Polyclonal Antibody Catalog # AP66987

Specification

Cdc25A (phospho Ser75) Polyclonal Antibody - Product Information

Application	WB
Primary Accession	P30304
Reactivity	Human, Mouse, Rat
Host	Rabbit
Clonality	Polyclonal

Cdc25A (phospho Ser75) Polyclonal Antibody - Additional Information

Gene ID 993

Other Names

CDC25A; M-phase inducer phosphatase 1;
Dual specificity phosphatase Cdc25A

Dilution

WB~~Western Blot: 1/500 - 1/2000.
Immunohistochemistry: 1/100 - 1/300.
ELISA: 1/5000. Not yet tested in other
applications.

Format

Liquid in PBS containing 50% glycerol, 0.5%
BSA and 0.02% sodium azide.

Storage Conditions

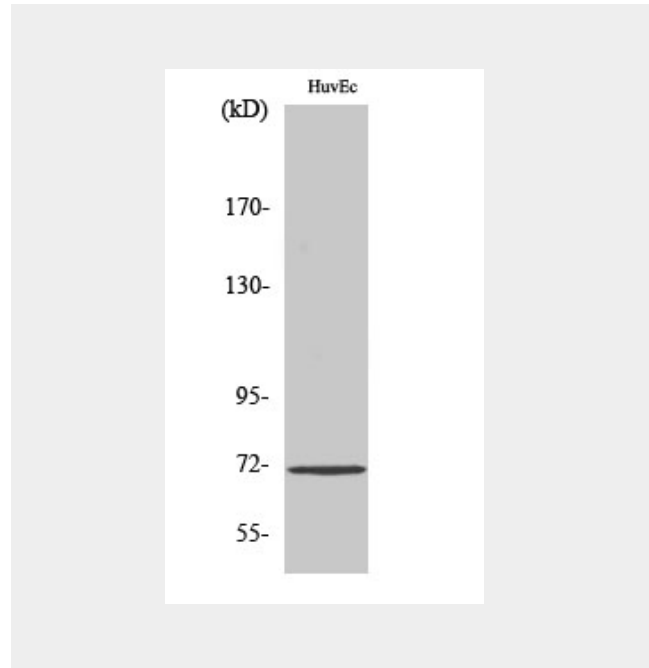
-20°C

Cdc25A (phospho Ser75) Polyclonal Antibody - Protein Information

Name CDC25A

Function

Tyrosine protein phosphatase which
functions as a dosage- dependent inducer
of mitotic progression. Directly
dephosphorylates CDK1 and stimulates its
kinase activity. Also dephosphorylates
CDK2 in complex with cyclin E, in vitro.



Cdc25A (phospho Ser75) Polyclonal Antibody - Background

Tyrosine protein phosphatase which functions
as a dosage-dependent inducer of mitotic
progression. Directly dephosphorylates CDK1
and stimulates its kinase activity. Also
dephosphorylates CDK2 in complex with cyclin
E, in vitro.

Cdc25A (phospho Ser75) Polyclonal Antibody - Protocols

Provided below are standard protocols that you may find useful for product applications.

- [Western Blot](#)
- [Blocking Peptides](#)
- [Dot Blot](#)
- [Immunohistochemistry](#)
- [Immunofluorescence](#)
- [Immunoprecipitation](#)
- [Flow Cytometry](#)
- [Cell Culture](#)