

KV β 1 Polyclonal Antibody

Catalog # AP63700

Specification

KV β 1 Polyclonal Antibody - Product Information

Application	IHC
Primary Accession	Q14722
Reactivity	Human, Rat, Mouse
Host	Rabbit
Clonality	Polyclonal

KV β 1 Polyclonal Antibody - Additional Information

Gene ID 7881

Other Names

Voltage-gated potassium channel subunit beta-1 (K(+)-channel subunit beta-1) (Kv-beta-1)

Dilution

IHC~IHC 1:100-200

Format

Liquid in PBS containing 50% glycerol, 0.5% BSA and 0.02% sodium azide.

Storage Conditions

-20°C

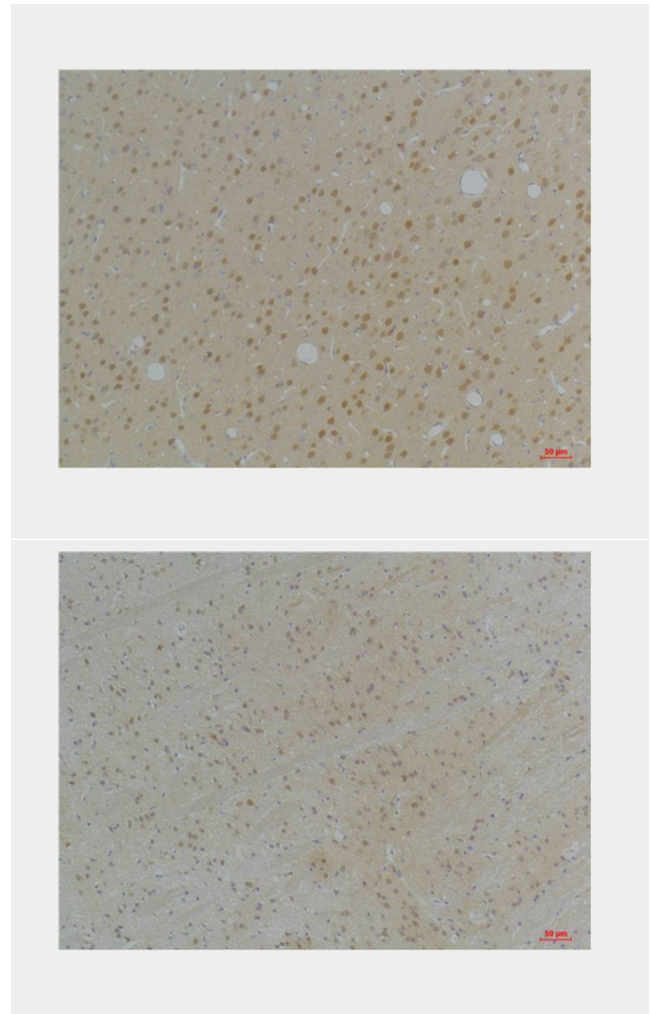
KV β 1 Polyclonal Antibody - Protein Information

Name KCNAB1

Synonyms KCNA1B

Function

Cytoplasmic potassium channel subunit that modulates the characteristics of the channel-forming alpha-subunits (PubMed:[7499366](http://www.uniprot.org/citations/7499366), PubMed:[7603988](http://www.uniprot.org/citations/7603988), PubMed:[17156368](http://www.uniprot.org/citations/17156368), PubMed:[17540341](http://www.uniprot.org/citations/17540341), PubMed:[19713757](http://www.uniprot.org/citations/19713757)). Modulates action potentials via its effect on the pore-forming alpha subunits (By similarity). Promotes expression of the pore-forming alpha subunits at the cell membrane, and thereby increases channel activity (By similarity). Mediates closure of delayed rectifier potassium channels by physically obstructing the pore via its N-terminal domain and increases the speed of



KV β 1 Polyclonal Antibody - Background

Cytoplasmic potassium channel subunit that modulates the characteristics of the channel-forming alpha-subunits (PubMed:7499366, PubMed:7603988, PubMed:17156368, PubMed:17540341, PubMed:19713757). Modulates action potentials via its effect on the pore-forming alpha subunits (By similarity). Promotes expression of the pore-forming alpha subunits at the cell membrane, and thereby increases channel activity (By similarity). Mediates closure of delayed rectifier potassium channels by physically obstructing the pore via its N-terminal domain and increases the speed of

target="_blank">17156368,PubMed:17540341,PubMed:19713757).
Modulates action potentials via its effect on the pore-forming alpha subunits (By similarity). Promotes expression of the pore-forming alpha subunits at the cell membrane, and thereby increases channel activity (By similarity). Mediates closure of delayed rectifier potassium channels by physically obstructing the pore via its N-terminal domain and increases the speed of channel closure for other family members (PubMed:9763623). Promotes the closure of KCNA1, KCNA2 and KCNA5 channels (PubMed:7499366,PubMed:7890032,PubMed:7603988,PubMed:7649300,PubMed:8938711,PubMed:12077175,PubMed:12130714,PubMed:15361858,PubMed:17540341,PubMed:19713757).
Accelerates KCNA4 channel closure (PubMed:7890032,PubMed:7649300).

channel closure for other family members (PubMed:9763623). Promotes the closure of KCNA1, KCNA2 and KCNA5 channels (PubMed:7499366, PubMed:7890032, PubMed:7603988, PubMed:7649300, PubMed:8938711, PubMed:12077175, PubMed:12130714, PubMed:15361858, PubMed:17540341, PubMed:19713757). Accelerates KCNA4 channel closure (PubMed:7890032, PubMed:7649300, PubMed:7890764, PubMed:9763623). Accelerates the closure of heteromeric channels formed by KCNA1 and KCNA4 (PubMed:17156368). Accelerates the closure of heteromeric channels formed by KCNA2, KCNA5 and KCNA6 (By similarity). Isoform KvB1.2 has no effect on KCNA1, KCNA2 or KCNB1 (PubMed:7890032, PubMed:7890764). Enhances KCNB1 and KCNB2 channel activity (By similarity). Binds NADPH; this is required for efficient down-regulation of potassium channel activity (PubMed:17540341). Has NADPH-dependent aldoketoreductase activity (By similarity). Oxidation of the bound NADPH strongly decreases N-type inactivation of potassium channel activity (By similarity).

PubMed:7890764, PubMed:9763623). Accelerates the closure of heteromeric channels formed by KCNA1 and KCNA4 (PubMed:17156368). Accelerates the closure of heteromeric channels formed by KCNA2, KCNA5 and KCNA6 (By similarity). Isoform KvB1.2 has no effect on KCNA1, KCNA2 or KCNB1 (PubMed:7890032, PubMed:7890764). Enhances KCNB1 and KCNB2 channel activity (By similarity). Binds NADPH; this is required for efficient down- regulation of potassium channel activity (PubMed:17540341). Has NADPH- dependent aldo-ketoreductase activity (By similarity). Oxidation of the bound NADPH strongly decreases N-type inactivation of potassium channel activity (By similarity).

Cellular Location

Cytoplasm. Membrane {ECO:0000250|UniProtKB:P63144}; Peripheral membrane protein; Cytoplasmic side. Cell membrane; Peripheral membrane protein; Cytoplasmic side. Note=Recruited to the cytoplasmic side of the cell membrane via its interaction with pore-forming potassium channel alpha subunits.

Tissue Location

In brain, expression is most prominent in caudate nucleus, hippocampus and thalamus. Significant expression also detected in amygdala and subthalamic nucleus. Also expressed in both healthy and cardiomyopathic heart. Up to four times more abundant in left ventricle than left atrium.

KVβ1 Polyclonal Antibody - Protocols

Provided below are standard protocols that you may find useful for product applications.

- [Western Blot](#)
- [Blocking Peptides](#)
- [Dot Blot](#)
- [Immunohistochemistry](#)
- [Immunofluorescence](#)
- [Immunoprecipitation](#)
- [Flow Cytometry](#)
- [Cell Culture](#)