

CaMKII β / γ / δ (Phospho Thr287) Monoclonal Antibody(4H2)
Catalog # AP63645**Specification****CaMKII β / γ / δ (Phospho Thr287) Monoclonal Antibody(4H2) - Product Information**

Application	IHC
Primary Accession	Q13554 , Q13555 , Q13557
Reactivity	Human, Rat, Mouse
Host	Mouse
Clonality	Monoclonal

CaMKII β / γ / δ (Phospho Thr287) Monoclonal Antibody(4H2) - Additional Information**Other Names**

CAMK2B; CAM2; CAMK2; CAMKB;
Calcium/calmodulin-dependent protein kinase type II subunit beta; CaM kinase II subunit beta; CaMK-II subunit beta; CAMK2G; CAMK; CAMK-II; CAMKG;
Calcium/calmodulin-dependent protein kinase type II subunit gamma;

Dilution

IHC~~IHC 1:100-200

Format

Liquid in PBS containing 50% glycerol, 0.5% BSA and 0.02% sodium azide.

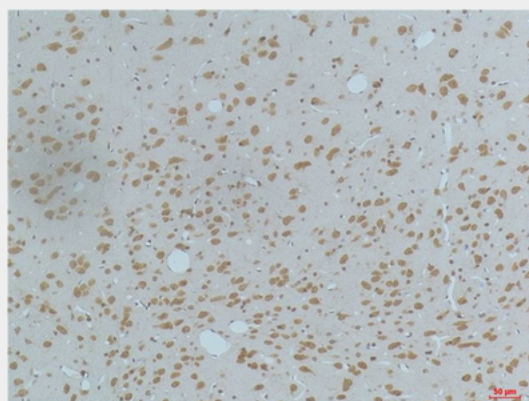
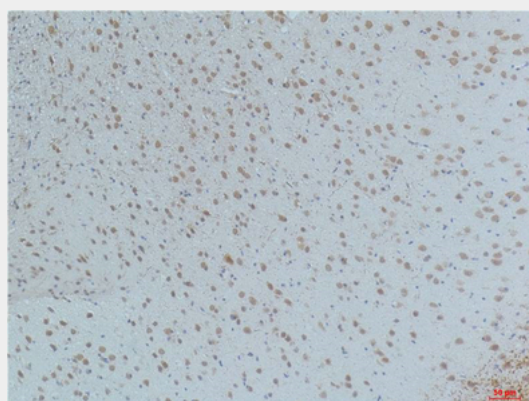
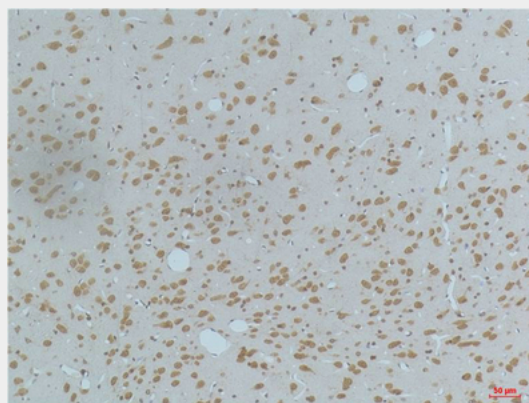
Storage Conditions

-20°C

CaMKII β / γ / δ (Phospho Thr287) Monoclonal Antibody(4H2) - Protein Information**CaMKII β / γ / δ (Phospho Thr287) Monoclonal Antibody(4H2) - Protocols**

Provided below are standard protocols that you may find useful for product applications.

- [Western Blot](#)
- [Blocking Peptides](#)
- [Dot Blot](#)



- [Immunohistochemistry](#)
- [Immunofluorescence](#)
- [Immunoprecipitation](#)
- [Flow Cytometry](#)
- [Cell Culture](#)

