

## Stat5a Polyclonal Antibody

Catalog # AP63587

### Specification

#### Stat5a Polyclonal Antibody - Product Information

|                   |                        |
|-------------------|------------------------|
| Application       | <b>WB</b>              |
| Primary Accession | <a href="#">P42229</a> |
| Reactivity        | <b>Human</b>           |
| Host              | <b>Rabbit</b>          |
| Clonality         | <b>Polyclonal</b>      |

#### Stat5a Polyclonal Antibody - Additional Information

**Gene ID** 6776

#### Other Names

STAT5A; STAT5; Signal transducer and activator of transcription 5A

#### Dilution

WB~~Western Blot: 1/500 - 1/2000.IHC-p:1:50-300. Not yet tested in other applications.

#### Format

PBS, pH 7.4, containing 0.02% sodium azide as Preservative and 50% Glycerol.

#### Storage Conditions

-20°C

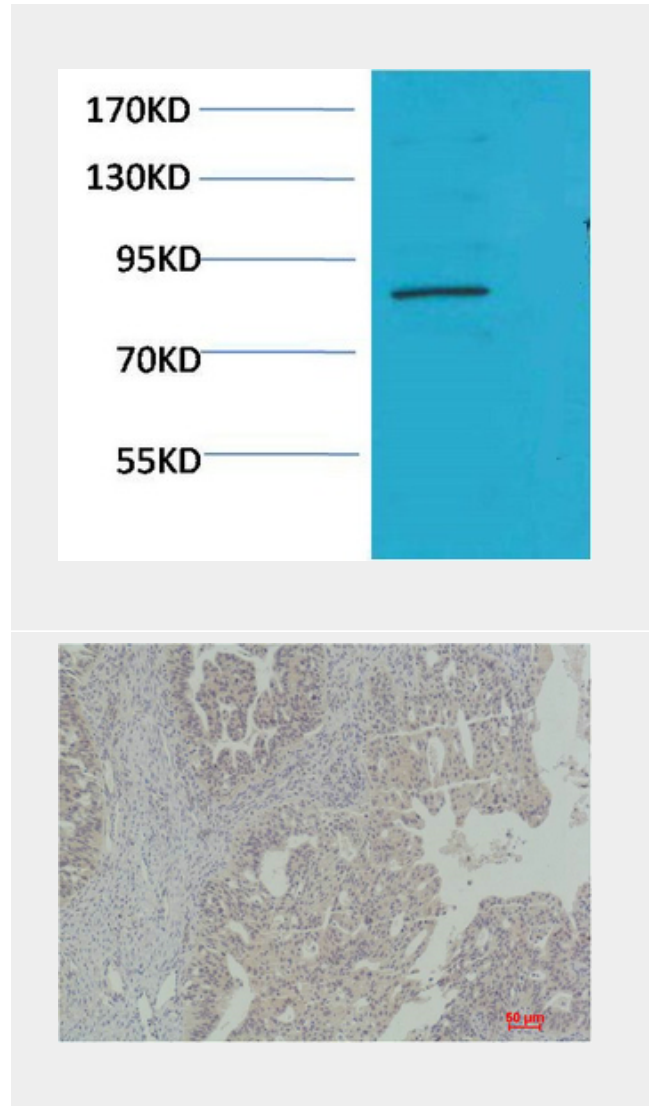
#### Stat5a Polyclonal Antibody - Protein Information

**Name** STAT5A

**Synonyms** STAT5

#### Function

Carries out a dual function: signal transduction and activation of transcription. Mediates cellular responses to the cytokine KITLG/SCF and other growth factors. Mediates cellular responses to ERBB4. May mediate cellular responses to activated FGFR1, FGFR2, FGFR3 and FGFR4. Binds to the GAS element and activates PRL-induced transcription. Regulates the expression of milk proteins during lactation.



#### Stat5a Polyclonal Antibody - Background

Carries out a dual function: signal transduction and activation of transcription. Mediates cellular responses to the cytokine KITLG/SCF and other growth factors. Mediates cellular responses to ERBB4. May mediate cellular responses to activated FGFR1, FGFR2, FGFR3 and FGFR4. Binds to the GAS element and activates PRL-induced transcription. Regulates the expression of milk proteins during lactation.

**Cellular Location**

Cytoplasm. Nucleus. Note=Translocated into the nucleus in response to phosphorylation

**Stat5a Polyclonal Antibody - Protocols**

Provided below are standard protocols that you may find useful for product applications.

- [Western Blot](#)
- [Blocking Peptides](#)
- [Dot Blot](#)
- [Immunohistochemistry](#)
- [Immunofluorescence](#)
- [Immunoprecipitation](#)
- [Flow Cytometry](#)
- [Cell Culture](#)