

**MAGEC1 Antibody (C-term)**  
**Purified Rabbit Polyclonal Antibody (Pab)**  
**Catalog # AP6175a**

**Specification**

**MAGEC1 Antibody (C-term) - Product Information**

Application	<b>WB, IHC-P,E</b>
Primary Accession	<a href="#">O60732</a>
Other Accession	<a href="#">NP_005453</a>
Reactivity	<b>Human</b>
Host	<b>Rabbit</b>
Clonality	<b>Polyclonal</b>
Isotype	<b>Rabbit Ig</b>
Calculated MW	<b>123643</b>
Antigen Region	<b>849-880</b>

**MAGEC1 Antibody (C-term) - Additional Information**

**Gene ID** 9947

**Other Names**

Melanoma-associated antigen C1,  
Cancer/testis antigen 71, CT71, MAGE-C1  
antigen, MAGEC1

**Target/Specificity**

This MAGEC1 antibody is generated from rabbits immunized with a KLH conjugated synthetic peptide between 849-880 amino acids from the C-terminal region of human MAGEC1.

**Dilution**

WB~~1:1000  
IHC-P~~1:50~100

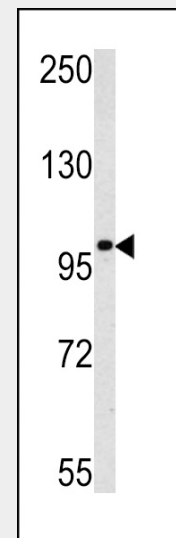
**Format**

Purified polyclonal antibody supplied in PBS with 0.09% (W/V) sodium azide. This antibody is prepared by Saturated Ammonium Sulfate (SAS) precipitation followed by dialysis against PBS.

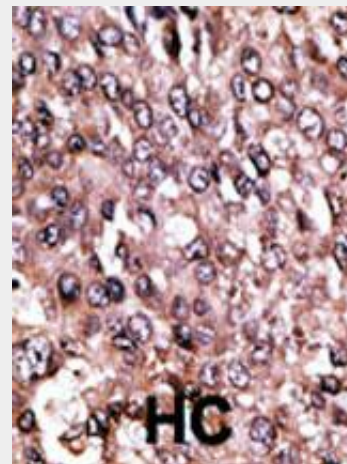
**Storage**

Maintain refrigerated at 2-8°C for up to 2 weeks. For long term storage store at -20°C in small aliquots to prevent freeze-thaw cycles.

**Precautions**



Western blot analysis of MAGEC1 antibody (C-term) (Cat.# AP6175a) in K562 cell line lysates (35ug/lane). MAGEC1 (arrow) was detected using the purified Pab.



Formalin-fixed and paraffin-embedded human cancer tissue reacted with the primary antibody, which was peroxidase-conjugated to the secondary antibody, followed by AEC staining. This data demonstrates the use of this antibody for immunohistochemistry; clinical relevance has not been evaluated. BC = breast carcinoma; HC = hepatocarcinoma.

MAGEC1 Antibody (C-term) is for research use only and not for use in diagnostic or therapeutic procedures.

#### **MAGEC1 Antibody (C-term) - Protein Information**

**Name** MAGEC1

#### **Tissue Location**

Expressed in testis and in tumors of a wide variety of histologic types

#### **MAGEC1 Antibody (C-term) - Protocols**

Provided below are standard protocols that you may find useful for product applications.

- [Western Blot](#)
- [Blocking Peptides](#)
- [Dot Blot](#)
- [Immunohistochemistry](#)
- [Immunofluorescence](#)
- [Immunoprecipitation](#)
- [Flow Cytometry](#)
- [Cell Culture](#)

#### **MAGEC1 Antibody (C-term) - Background**

MAGEC1 is a member of the melanoma antigen gene (MAGE) family. The proteins of this family are tumor-specific antigens that can be recognized by autologous cytolytic T lymphocytes. This protein contains a large number of unique short repetitive sequences in front of the MAGE-homologous sequence, thus is about 800 residues longer than the other MAGE proteins. This gene is expressed in a significant proportion of tumors of various histological types, whereas it is silent in normal tissues, except testis. The function of this gene is unknown.

#### **MAGEC1 Antibody (C-term) - References**

- Jungbluth, A.A., et al., Int. J. Cancer 99(6):839-845 (2002).  
Chen, Y.T., et al., Proc. Natl. Acad. Sci. U.S.A. 95(12):6919-6923 (1998).  
Lucas, S., et al., Cancer Res. 58(4):743-752 (1998).  
Lim, S.H., et al., Eur. J. Haematol. 67 (5-6), 332-334 (2001).